

2019-2020 Rotary Club of Conway Membership

Mac Altman**	Forestry
Bill Benson*	Banking
Amanda Brown*	Marketing
Janet Carter	Banking
Scott Cisler	Sales
Jamie Colway*	Marketing
Mike DiMarino*	Bakery Owner-Retired
James Friday	Local Government
Mitch Godwin*	Banking
Patty Hendrick	Education
Joseph Huffman*	County Government
Shannon Jordan*	Engineer
George Livingston**	Financial Services
Sherry Maloni	Banking
Jill Marshall*	Energy Services
Gray Meridith*	Banking
Kelly Moore	Local Government
Brad Odom*	Medical SW
Steve Perry**	Computer Consultant
Charles Rhodes Jr.*	Law
Kim Sauls	Banking
Cecelia Smith**	Education
Phil Thomas*	Banking
David Welborn	Banking
Jim Wilkison**††	Computer Services
Steve Williams*	Printing/Promotions
John Zilinsky*	Law

**Paul Harris Fellow*

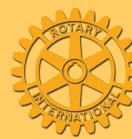
***Paul Harris Fellow/Benefactor*

†Past Asst. District Governor

††Past District Governor

Rotary Club of Conway

Since 1945 • 74 Years of Service



September 26, 2019



2019-2020 Directors & Officers

President

Jill Marshall

President-Elect

Joe Huffman

Past President

Kim Sauls

Club Secretary

Gray Meridith

Treasurer

Amanda Brown

Vocational Service

John Zilinsky

Club Administration

Steve Perry

Public Image

Kelly Moore

Service Projects

David Welborn

Membership

George Livingston

Foundation

Shannon Jordan



Area Clubs For Makeups

- ◊ **Carolina Forest Sunrise**—Wednesday, 7:00 a.m., Legends Golf Resort
- ◊ **Surfside Beach**—Wednesday, Noon, Prestwick
- ◊ **Little River**—Wednesday, Noon, CB Berry Community Center
- ◊ **Myrtle Beach Chicora**—Friday, 12:30 p.m., Dunes Club
- ◊ **Myrtle Beach**—Monday, 12:30 p.m., Ocean Reef Resort
- ◊ **Myrtle Beach Sunrise**—Tuesday, 7:30 a.m., Sea Captain's House
- ◊ **North Myrtle Beach**—Tuesday, 12:30 p.m., Surf Golf & Beach Club and Monday, 7:30 a.m., Friendly's
- ◊ **Murrells Inlet**—Tuesday, 12:30 p.m., The Hot Fish Club

Welcome to the Rotary Club of Conway

Today's Speaker

Please welcome
Kelli James, Conway Chamber

At Our Next Meeting

District Governor Visit

Literacy Project

It's time to sign up for dictionary distribution to 3rd graders at area schools!



AMERICAN VOICES

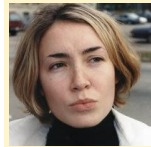
Merriam-Webster Adds 'They' To Dictionary

Merriam-Webster announced updates to its dictionary this week, including adding the use of the word "they" as a singular pronoun. What do you think?



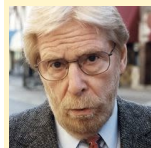
"Everyone knows the English language is fixed at exactly 783,479 words and not one more."

ANDREW FERRELL • GRAIN COUNTER



"If Merriam-Webster says it's okay, then I guess my kid can move back in with me."

MURIEL WINTER • BASE-BALL STITCHER



"Wow, I guess even language can be controversial now."

ART CLEVELAND • PANT SIZER

Are You Smarter Than The Average Rotarian?

What is added to white sugar to make it brown sugar?

- A) Food coloring
- B) Chocolate
- C) Molasses
- D) Nothing—brown sugar is organic



Answer below

Rotary Connects The World



Member Anniversaries

9/25 Kelly Moore

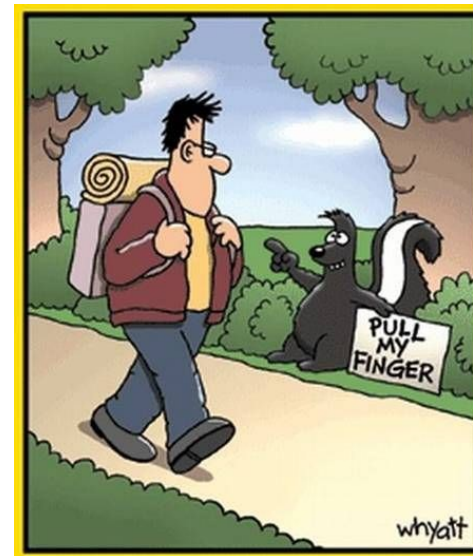


Wedding Anniversaries

None

Birthdays

None



SPORTS NEWS IN BRIEF

Ben Roethlisberger Assures Women Of Pittsburgh He's Not Done Yet



Visit our website: www.conwayrotary.org

C) Molasses



IMPORTANT

When the DG is introduced, it is customary for club members to stand.



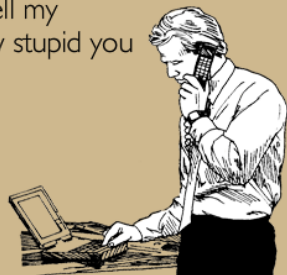
CART Fund

The blue buckets are for Alzheimer's research, a Rotary initiative. Please give generously.



"We find pizza softens the blow of bad news."

When I get off the phone with you I am going to tell my coworkers how stupid you are.



someecards
user card