

Rotary
District 7670



2023 Newsletter

Special Edition Newsletter

District Governor Connie Molland

Rotary7670.org

How Can I Help?

By Connie M. Molland



Since Helene hit Western North Carolina, I have often heard people ask, “How can I help?” The answer in the early weeks after the storm was easy – show up and start shoveling or cleaning tree debris. But as the initial cleanup and the immediate relief-related needs are waning, we are now entering the rebuilding phase. In many ways, this phase is trickier as the needs vary from county to county so there isn’t a one size fits all answer. Additionally, what is a need today in one community, may be fixed and no longer a need the very next day.

Our District will continue to promote “work days” for hands on projects that Clubs share with us – visit the District Facebook page often to learn about those. And many Clubs are applying for disaster recovery grants which will include a component of Rotarian involvement.

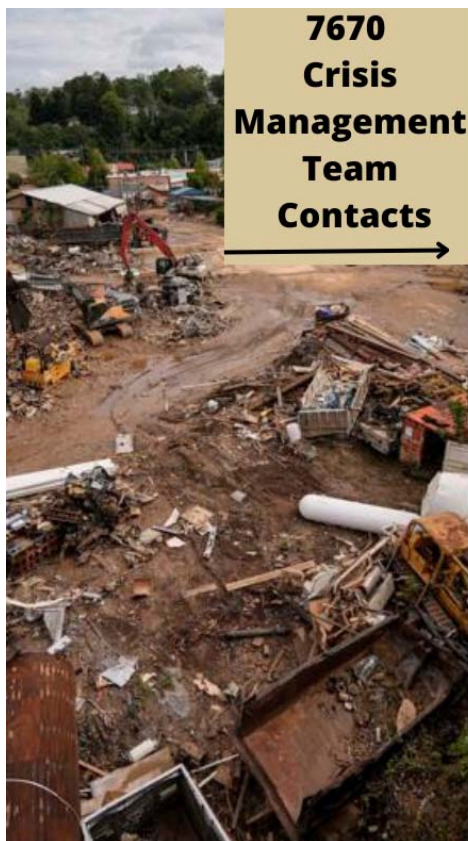
But for many folks, writing a check is the best way for them to help. District 7670 has set up a matching gift program that is a dollar-for-dollar match for any donations made to the District Disaster Recovery Fund. If you – or someone you know – falls in the category of wanting to help with a donation, now is a great time to do this as the amount donated is doubled.

The rebuilding phase will be months if not years and will require enormous sums of money for our area to fully recover. The burden of this does not lie solely on our shoulders and I’m reminded by a PDG that Rotary isn’t a disaster relief organization. But we are in a declared disaster area and people want to help. Feel free to suggest that they go to our website and consider donating today.

<http://rotary7670.org>

Who To Contact

Tuesday, October 8, 2024



- **DGE Alpo Portelli**
 - *Supply Needs*
 - colalpo@gmail.com
 - 828-442-1196
- **DGN Paige Scott**
 - *Financial Donations/Needs*
 - paigecs123@gmail.com
 - 816-714-9998
- **DFC Jim Cruickshank**
 - *Financial Donations/Needs*
 - jimcruickshank2@gmail.com
 - 706-231-5818
- **DPIC Julie West**
 - *Communications*
 - JpwestRN1@gmail.com
 - 704-616-5090
- **Guy Gooder, District Community Service Chair**
 - *Volunteer Opportunities*
 - gooderfranklin@gmail.com
 - 828-421-4845

Rotary
District 7670



Rotarians Unite with ShelterBox to Support WNC Families Affected by Disaster

By Julie P. West



The basic needs of food, clothing, and shelter are essential for all people, but when disaster strikes, these fundamental requirements can be taken away in an instant. Hurricane Helene left many in District 7670 without these necessities, creating an urgent need for relief. In the face of this crisis, ShelterBox USA has stepped up to restore hope and provide the critical support families need to rebuild their lives.

ShelterBox USA is a nonprofit organization that provides disaster relief to families affected by natural disasters and conflict. Through generous donations from individuals and organizations, ShelterBox delivers emergency shelter and essential tools to help affected communities recover. As an affiliate of ShelterBox, the global organization recognized as Rotary's official disaster relief partner, ShelterBox USA is committed to offering timely and effective assistance during times of crisis.

In response to Hurricane Helene, ShelterBox USA has mobilized to provide comprehensive emergency supplies to the hardest-hit areas. These critical resources ensure that affected families have reliable access to light, clean water, cooking capabilities, and warmth during these challenging times. The organization's response highlights the power of collaboration between ShelterBox USA, Rotary, and corporate partners, all working together to support communities in need.

By delivering emergency relief, ShelterBox USA helps families regain a sense of safety and stability in the wake of disaster. With the continued support of generous donors and dedicated partners, they will continue to make a difference in the lives of those affected by Hurricane Helene and other crises around the world.

On November 7, 2024, Rotarians from four different districts gathered with ShelterBox to assemble emergency relief kits for families in Western North Carolina (WNC). The event, held to provide aid to communities affected by recent disasters, brought together an impressive group of leaders and volunteers, including Rotary International President Stephanie Urchick, RI Director Patrick Eakes, District Governor Connie Molland, and District Governor-Elect Alpo Portelli.

The kits, which will be distributed across the counties of Avery, Buncombe, Haywood, Henderson, Madison, McDowell, Mitchell, Polk, Transylvania, and Yancey, are packed with critical supplies to support families in need. The comprehensive kits include Sub-zero sleeping bags, heavy comforters, tents, camp stoves, solar-powered lights, solar chargers, and water filters.

Notably, every county except Transylvania requested and received Sawyer water filter systems—approximately 110 per county—ensuring that families have access to clean, safe water during this challenging time. This effort, made possible through ShelterBox's partnership with Rotary, underscores the power of collaboration and the impact of local and global networks working together.

The ShelterBox and Rotary partnership garnered national news media attention with segments on CNN and The Weather Channel. Take a moment to watch these wonderful highlights for the relief efforts for Hurricane Helene and Milton.

The Weather Channel

https://www.youtube.com/watch?v=rzTA4T_KzoM&t=20s

The Weather Channel 2

<https://www.youtube.com/watch?v=Zu7OHy5cdXA&t=4s>

CNN

<https://www.youtube.com/watch?v=FhBP7ERfqd8>

A heartfelt thank you goes to ShelterBox for their partnership with Rotary, which has made this important initiative a reality. As always, where there are Rotarians, magic happens—transforming the lives of those in need and restoring hope to communities in crisis.





Rotary Club of Asheville Responds to Hurricane Helene Crisis with Heater Donations

By David Mans

In the aftermath of Hurricane Helene, Western North Carolina (WNC) continues to face severe challenges. Widespread power outages persist, leaving many residents without electricity as temperatures drop, creating an urgent need for warmth and shelter.

In response to this growing crisis, the Rotary Club of Asheville applied for and successfully secured the first-ever \$25,000 Rotary Zone 33/34 disaster relief grant. With these funds, the club purchased portable heaters to provide immediate warmth for families and individuals without power.

Partnering with local nonprofit Beloved Asheville, Rotarians worked together to deliver these heaters to those who need them most. Volunteers from both organizations have been distributing the heaters to vulnerable residents, including the elderly and families with small children, in areas hardest hit by the storm.

The Rotary Club of Asheville's swift action highlights the power of community collaboration in times of disaster. As temperatures continue to drop and recovery efforts unfold, local organizations like the Rotary Club and Beloved Asheville are playing a crucial role in bringing immediate relief to those most affected by Hurricane Helene.





Caring for Self after a Disaster

By Julie P. West



In the aftermath of a disaster, it's essential to remember that mental health is a critical component of recovery. The emotional toll of a crisis—whether it's grief, anxiety, or stress—can linger long after the physical damage is repaired. Taking care of yourself and those you love during this time is vital. It's okay to feel overwhelmed, and it's important to acknowledge those feelings rather than suppress them. Check in with family, friends, and neighbors, offering support and a listening ear. Seek professional help if needed, and encourage others to do the same. Prioritize self-care—whether through quiet time, exercise, or connecting with loved ones—and allow yourself the space to process the emotional impact. Healing from a disaster involves both physical and emotional recovery, and by nurturing our mental well-being, we can build resilience, find strength, and move forward together.

Rotary Four Way Test



The 4-Way Test

of things we do and say:

1. Is it the **TRUTH**?
2. Is it **FAIR** to all concerned?
3. Will it build **GOODWILL** and **BETTER FRIENDSHIPS**?
4. Will it be **BENEFICIAL** to all concerned?

Account Leaders



Margaret Fenton Lebeck
District Peace Ambassador



Sarah J McGuire
District RLI Chair



Connie M. Molland
District Governor



Richard Molland
Chief of Staff



Sean Gibson
iPDG



Alex R Portelli
DG-Elect



Paige Carroll Scott
DG-Nominee



Tammy Mosteller
District Membership Chair



Kenneth A. Shull
District Rotary Foundation Chair



Julie P. West
District Public Image/PR Chair



Jennifer L. Wilcox
District Empowering Girls Advocate



Michael Lanzilotta
District DEI Chair



Andie R Taylor
District CART Chair



Cynthia K. Ireland
District Polio Plus Chair



Karolyn W. Killian
District Conference Chair



Kathy P Scott
Rotaract Chair



James A. Cruickshank
District Finance Chair



Michael Stevenson
Youth Services Chair



Laura J Phipps
Youth Protection Officer



James O. Perry
District Treasurer



John F. Baumrucker
International Services Chair

Frankie L Adkins

Billi J. Black



Youth Exchange
Chair



DCO-District
Comm. Officer