

Rotary

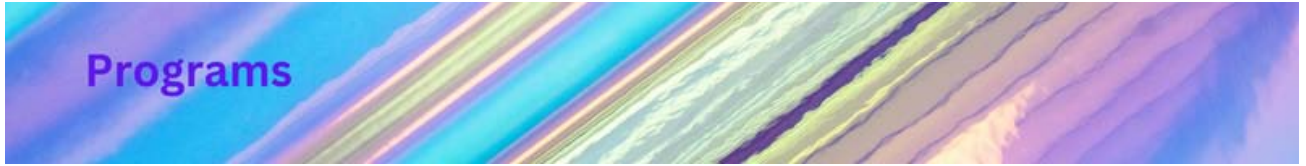


Club of Asheville THE COG

Monday, March 20, 2023



Program



Club Meeting

March 23, 2023

Asheville
Meets at TUTION HALL,
TRINITY EPISCOPAL
CHURCH. To request a
Zoom simulcast link email
avrotary1915@gmail.com.
60 Church St
Asheville, NC 28801
Time: Thursday at 12:30
PM

Join us in-person or via Zoom to learn about **RiverLink** from its Executive Director,
Dr. Lisa Raleigh. [See details on their website here.](#)

Its mission is "Promoting the environmental and economic vitality of the French Broad River and its watershed."



Speakers

March 23, 2023

[Dr. Lisa Raleigh](#)
The River and the
Community

March 30, 2023

[Jim Lenburg](#)
U.S. Relations with China

April 13, 2023

[Rosario Villareal](#)
HOLD Maternal and Child
Health in Western NC

Coming Events

April 3rd
[Community Service
Monday](#)

April 4th
[Board Meeting](#)

Club Leaders



[Ross Sloan](#)
President



[Patrick A. Snyder](#)
Attendance
Secretary
President-Elect
Sergeant-at-Arms



[Betty A. Doll](#)
Secretary



[Janet L. Whitworth](#)
Past President
Treasurer

[Celeste B. Collins](#)
Club Admin
Chair

Betty



March 16, 2023
From Club Secretary Betty Doll

[Here](#) is a link to a recording of the **March 16, 2023 program**, when we heard from five worthy
Community Grant recipients.

**Asheville
Symphony Society,
Inc**

**Compañeros
Inmigrantes de las
Montañas en Acción**



(CIMA)

- Evergreen Community Charter School
- Ecumenical Winter Shelter at Grace Episcopal Church
- Green Built Alliance

Club Video--Imagine Rotary!



Club Director



[Michelle Daniels](#)
Attendance Secretary
Sergeant-at-Arms



[Tanya N. Fletcher](#)
Club Director
Youth Protection Officer
Youth Services Chair



[David T. Kaverman](#)
Membership Chair
Club Director



[Kevin R. Montgomery](#)
Club Director



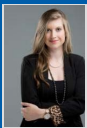
[Rachel Rion Moran](#)
Bulletin Editor



[Linda Nelson](#)
Club Director
Communication and Outreach



[Maxine O. Parsons-Kogut](#)
Club Director
Rotary Foundation Chair



[Eva-Michelle G. Spicer](#)
President-Nominee



[Kristy Wilson](#)
Club Director
Vocational Service Chair



[Albert Davis](#)
Club Service Chair



[Richard T. Devereaux](#)
Webmaster



[David Andrew Mans](#)
International Service Chair



[Andrew Mercurio](#)
Club Fund Raising Chair

[Marcia Whitney](#)
Diversity Equity & Inclusion

[Read More](#)

ANNOUNCEMENTS

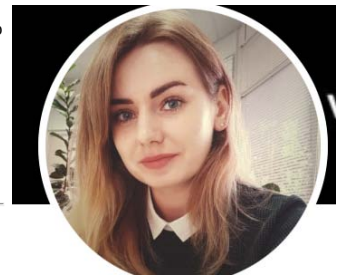


Honorary Club Membership for Yana Petlovana

Club President Ross Sloan announced that the club board had voted to extend an honorary membership to this Ukraine resident. She again joined our meeting through Zoom.

He also reported on donations made in response to her moving presentation on conditions in war-torn Ukraine.

Donations were made by local club members to both the RI Foundation and to the Asheville Club Foundation, which is in discussion with the Rotary Club of Odessa, Ukraine about a partnership using those funds.



PHF Award + 8 goes to Katherine Morosani

Katherine Morosani was recognized for her cumulative donations of over \$9,000 to the Rotary International Foundation. Katherine is our iPast Club President.



To learn more about this Rotary International honor, read [here](#).

Every club member is expected to make a donation of \$100 each year to the Rotary International Foundation. This is referred to as **REY: Every Rotarian, Every Year**. When a member's cumulative donations top \$1,000, the Paul Harris Fellow pin is awarded. With each additional \$1,000 donation, there is an additional recognition.

Interested in [Rotary jewelry? Check it out here...the Russell-Hampton website.](#)

Interested in Rotary Clothing?
Ask our club provider **Lacy A. Hagan**,
who owns [Lantana Productions Embroidery](#).



[Daniel M. Crupi](#)
RYLA Point of Contact



[Jacqueline Boone](#)
Club Public Image Chair



[Katherine Morosani](#)
IPast President



[Lynne Porter](#)
Assistant Governor



Maxine



Need to set-up a Rotary International account to donate EREY?
Questions about Rotary International awards?
Ask our **Rotary Foundation Chair Maxine Parsons-Kogut.**

Birthdays

- Allison C. Krivatch
March 20th
- Kristy Wilson
March 28th
- Patrick A. Snyder
April 3rd
- Linda Nelson
April 8th
- Richard Travis Hall
April 8th
- Joshua M. Abrams
April 9th
- Edward J. Snyder III
April 12th
- Tanya N. Fletcher
April 12th
- Stephen E. Aschmann
April 13th
- Angela Nicole Ferrell
April 14th
- Daniel M. Crupi
April 14th
- Rebecca A. Robertson
April 15th
- Mary Frances Allen
April 16th
- Janey Cope
April 17th
- Jane Brody
April 18th

Wedding Anniversaries

- Kirk Borland
March 22nd
- Rachel Rion Moran
March 23rd
- Kyle R. Boyd
April 8th
- Edward J. Sullivan
April 9th
- Patricia M. Puckridge
April 10th
- Albert Davis
April 18th



Member Induction: Sarah Cockman
"I have been in Asheville for just over 10 years. I work in the hotel/hospitality industry and am currently employed by McKibbin Hospitality and am the Assistant General Manager of Kimpton Hotel Arras in downtown Asheville."

She is a Corporate Delegate for Hotel Arras. David McCartney will be the Club Member for Hotel Arras.

Note that Corporate Delegates are similar in status to "Honorary Members" as they are not official Rotary members. We encourage them to be actively engaged in the Club activities and treat them very much like members, with the exception that they cannot be club officers or serve on the Board.



Rotary International is sub-divided into countries, then districts--not by states.
Our club is in District 7670. Learn more about it [here](#). The District hosts a District Conference each spring.

For the upcoming **April District Conference, our Club Director for Communication and Outreach Linda Nelson** is collecting SWAG for the conference Welcome Bags.

This is a great opportunity for you to promote **your** business! This type of business networking is one of the advantages of being a Rotary member!

Deadline: March 31st to Linda Nelson. Quantity required 150

Rotary International

Rotary International is the association of Rotary Clubs worldwide. The administration of RI is managed by officers, directors and committees from throughout the world. Yearly, RI holds a convention in various countries to stimulate, inspire and inform all Rotarians at an international level, to motivate them to develop Rotary at the Club and District levels.

Districts

Rotary International groups clubs into districts to make local administration easier. There are over 500 districts throughout the world, with a range of between 45-60 clubs each. Each **district is led by a governor, who is assisted by other officers.** The annual District Conference emphasizes fellowship and a chance to share ideas, as well as a place to conduct District business. Our Rotary Club is part of District 7670.

Clubs

There are over 33,000 Rotary clubs in more than 200 countries and geographical areas. Clubs are nonpolitical, nonreligious, and open to all cultures, races, and creeds.



LOOKING AHEAD - INVITE GUESTS

Overview of Rotary for Potential Members

On the **2nd Thursday of each month** this year, we will be offering an exciting new way for potential new members to learn about Rotary and whether it's a good fit for them. **The next session will be April 13th at 11:15 in the main conference room at Trinity.** We will finish by noon, so any guests can join us for lunch if they would like.

Future Dates: May 11, June 8



Blank or "Thank You" Note Cards Requested

SUSAN



Betty



Got Note Cards?

The next **Honor Flight** is in April and one of our club's projects has been to write notes and cards to the Veterans who participate. We want to thank them for their service to our country and to let them know how many people appreciate them.

If you have any note cards (they can be thank you cards or blank note cards) that you can contribute to this project, please bring them to a Rotary meeting and give them to either Susan Harper or Betty Doll. (At a future meeting we will take some time to write cards to the veterans.) Thank you in advance for your help!

RAFFLE ITEMS REQUESTED

Please donate raffle items for our weekly drawing.

This is an opportunity to promote your business! Donate your company SWAG or other prizes!



To explain...at the end of each meeting, we have a raffle. Be sure to buy raffle tickets at the desk when you sign-in. The winning pot accumulates each week until the winner not only has their raffle number called out but also draws the "Ace of Spades" from the deck on the first or second try. We go through the entire deck of cards, so as the pot increases, so does your chance of drawing the "Ace of Spades" and winning!

ABCCM is in need of volunteers to help with their **Code Purple Safe Haven Program**. It runs through April 15. Please contact club member **Shannon.Paris@ABCCM.org**

[Read More](#)



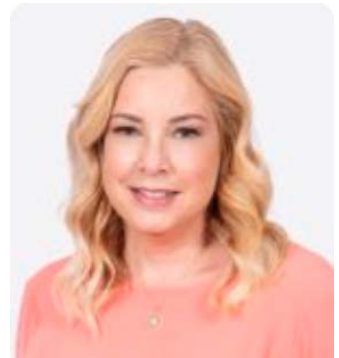
Local Community Service - Monday, April 17, 2023 at Manna Food Bank

Local Community Service

The Downtown Rotary is rolling up their sleeves to help **MANNA Food Bank** on **Monday, April 17th from 1:00 to 3:00pm**, located at 627 Swannanoa River Road.

MANNA FoodBank is a member of Feeding America, the nation's largest domestic hunger-relief organization. Since 1983, MANNA has and continues to serve communities across 16 counties of Western North Carolina, including the Qualla Boundary through a network of hundreds of dedicated partners, providing food with hope and dignity to people experiencing hunger in our 6,434 square mile region. MANNA is currently moving over 70,000 pounds of food each day of the year through a partner network of over 200 agencies, stretching every resource to meet the growing need for food across our 16-county region of WNC.

If you have questions or plan to be there, please email Jane Brody at jbrody@naibeveryly-hanks.com.



End Notes



FINANCIAL SUPPORT FOR CLUB PROJECTS

Donations to our **Club Foundation** can now be made online directly on our website.

- Couldn't make the fundraiser but want to contribute to our projects this year?
- Owe happy dollars for birthdays and anniversaries?
- Been fined for looking "too good" in the media?

Hit the EASY button by going to RotaryAsheville.org.

Or mail your check to
Rotary Club of Asheville Foundation
P.O. Box 1954
Asheville, NC 28801



COINS FOR ALZHEIMER'S RESEARCH TRUST (CART)

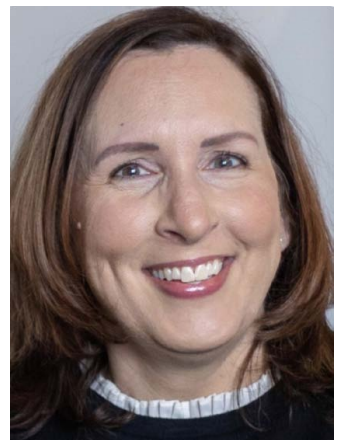
CART has started a new program wherein a club member volunteers to be a Matching Donor for the funds collected in the CART buckets on each table that week. To keep it sane, the top matching request is \$50.

Thank you to **Mary Michaels** for "making the match" on March 9.

Thank you to club president **Ross Sloan** for "making the match" on March 16.

The CART Fund is dedicated to raising funds to provide "seed" money for cutting edge, high-impact research in hopes of finding a cure/prevention for Alzheimer's disease. [Learn more about CART here.](#)

Can you **remember** to toss some small bills or coins into the blue bucket on each table? (That's a little ALZ joke.)



If you wish to sign up, email our club CART chair, **Michelle Daniels** at michelle4rca@gmail.com



TREASURER OR THE SGT-AT-ARMS --NOT in the blue CART buckets in the center of each table.

Additional Volunteer Opportunities:

Please submit any volunteer opportunities you feel your fellow Rotarians would enjoy to Al Davis or Jane Brody.



**COG Corrections?
Suggestions? Compliments?**

If you would like to add an announcement to an upcoming COG, please email RachelRionMoran@gmail.com no later than the Saturday before the Tuesday publishing.

Don't like the photo of you that I used here in the COG?
You are welcome to email me the headshot of your choice.
I will update your DACdb listing. That is where I copy them from.