

# Rotary



## Club of St. Charles Parish

### Club Leaders



[Brian J. Reulet](#)  
President



[Randy D. Matherne](#)  
President-Elect



[Charlie Chauvin](#)  
Secretary



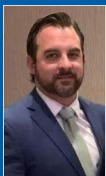
[Chad D. Dufrene](#)  
Treasurer



[Kelsey Pollock](#)  
Public Relations Chair



[Justin Goings](#)  
Membership Chair



[Zack Young](#)  
Rotary Foundation  
Chair



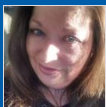
[Beth Anne Billings](#)  
Club Programs Chair



[Yvette A. Wolford](#)  
Community Service  
Chair



[Katina S. Summers](#)  
International Service  
Chair



[Jackie Bryant](#)  
Youth Services Chair

[Kimberly M.  
Babineaux](#)  
Youth Services Chair

### Birthdays

No Birthdays Found

### Years of Service



[Gregory C. Champagne](#)  
37 Years



[Dudley A. Webre](#)  
37 Years



[Robert C. Monti](#)  
33 Years



[Charlie Chauvin](#)  
6 Years



[Don Paul Landry](#)  
5 Years

### Wedding Anniversaries

No Wedding Anniversaries Found



David Woolf  
Sergeant-at-Arms



Shelly P. Schonekas  
CCO-Club Comm.  
Offcr



Thomas E. Hines Jr.  
iPast President

## Club Meeting

St. Charles Parish  
Meets at Legacy Venue  
737 Paul Maillard Rd Suite A  
Luling, LA 70070  
Time: Wednesday at 12:00 PM