

Rotary



Club of St. Charles Parish

Club Leaders



[Brian J. Reulet](#)
President



[Randy D. Matherne](#)
President-Elect



[Charlie Chauvin](#)
Secretary



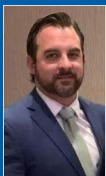
[Chad D. Dufrene](#)
Treasurer



[Kelsey Pollock](#)
Public Relations Chair



[Justin Goings](#)
Membership Chair



[Zack Young](#)
Rotary Foundation
Chair



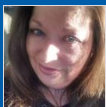
[Beth Anne Billings](#)
Club Programs Chair



[Yvette A. Wolford](#)
Community Service
Chair



[Katina S. Summers](#)
International Service
Chair



[Jackie Bryant](#)
Youth Services Chair

[Kimberly M.
Babineaux](#)
Youth Services Chair

Birthdays

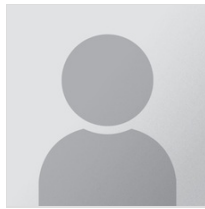


[Mary K. Clulee](#)
January 27th



[Melissa Arceneaux
Myers](#)
January 29th

Years of Service



[Lauren Rogers](#)
4 Years

Wedding Anniversaries



[Carl Cantrelle Jr.](#)
January 27th



[William Edward
Wahden](#)
January 29th



David Woolf
Sergeant-at-Arms



Shelly P. Schonekas
CCO-Club Comm.
Offcr



Thomas E. Hines Jr.
iPast President

Club Meeting

St. Charles Parish
Meets at Legacy Venue
737 Paul Maillard Rd Suite A
Luling, LA 70070
Time: Wednesday at 12:00 PM