

Rotary



Club of St. Charles Parish

Club Leaders



[Brian J. Reulet](#)
President



[Randy D. Matherne](#)
President-Elect



[Charlie Chauvin](#)
Secretary



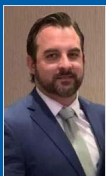
[Chad D. Dufrene](#)
Treasurer



[Kelsey Pollock](#)
Public Relations Chair



[Justin Goings](#)
Membership Chair



[Zack Young](#)
Rotary Foundation
Chair



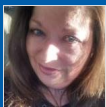
[Beth Anne Billings](#)
Club Programs Chair



[Yvette A. Wolford](#)
Community Service
Chair



[Katina S. Summers](#)
International Service
Chair



[Jackie Bryant](#)
Youth Services Chair

[Kimberly M.
Babineaux](#)
Youth Services Chair

Birthdays



[Jacqueline Dufrene-Diaz](#)
January 7th



[Patrick J. Bowes](#)
January 7th



[Rochelle Touchard](#)
January 8th

Years of Service



[Matthew L. Jewell](#)
2 Years

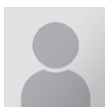
Wedding Anniversaries



[Melissa Manning Perrier](#)
January 1st



[Patrick J. Bowes](#)
January 4th



[Lauren Rogers](#)
January 6th



David Woolf
Sergeant-at-Arms



Shelly P. Schonekas
CCO-Club Comm.
Offcr



Thomas E. Hines Jr.
iPast President

Club Meeting

St. Charles Parish
Meets at Legacy Venue
737 Paul Maillard Rd Suite A
Luling, LA 70070
Time: Wednesday at 12:00 PM