

# Rotary



## Club of Springfield Metro

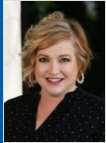
### Club Meeting

Springfield Metro  
Meets at 425 Downtown  
425 W Walnut St  
Springfield, MO 65806-2041  
Time: Tuesday at 5:00 PM

### Club Leaders



[James A. Hallam](#)  
President



[Sarah Sissel](#)  
President-Elect



[Andrea Compton  
Brady](#)  
Secretary  
Past President



[Michael Lee Brady](#)  
Treasurer  
Past President



[Simone A. Hite](#)  
Public Relations Chair  
Club Public Image  
Chair



[Donald Brown](#)  
Service Projects Chair



[Richard L. Horton](#)  
Rotary Foundation  
Chair



[Anthony L. Shalloup  
Jr.](#)  
Armed Service  
Veteran  
Membership Chair



[Padgett S. Smith](#)  
Sergeant-at-Arms



[Lisa M. Sims](#)  
Vocational Service  
Chair  
Youth Services Chair

## Morey Mechlin talks The Community Focus Report July 19, 2022

By Sarah M. Watson



On July 19, 2022, Morey Mechlin will be presenting to Springfield Metro the 2021 Community Focus Report for Springfield & Greene County—the biennial report card that highlights the community's strengths and challenges.

The format is new to account for the dramatic impact of the COVID-19 pandemic since the 2019 report.

The [printed edition](#) (pdf), released Thursday, Oct. 21, takes the 11 topics and views them through the lens of five widely accepted Social Determinants of Health: Economic Stability; Education Access and Quality; Health Care Access and Quality; Neighborhood and Built Environment; and Social and Community Context. The goal: To understand how our strengths and challenges affected our response to the pandemic.

The report also notes six overall themes from the Blue Ribbons and Red Flags:

- **The need to regain momentum:** The pandemic halted progress in several areas where the community had been making strides as of 2019. The Forward SGF visioning effort is once again restarting, and major construction projects are once again underway throughout the community.
- **Diversity, equity and inclusion:** Over the past decade, Springfield and Greene County have become more diverse—a key component to helping attract and retain talent in the area. It will be a critical piece to helping tackle the shortage of skilled workers in the area, a Red Flag.
- **Community health:** Our health care system—public and private—took center stage during the pandemic as organizations collaborated to take care of the community and ensure everyone's safety and health. Burrell Behavioral Health's Rapid Access Unit, highlighted in multiple white papers, shows how the health sector is exploring innovative ways to confront our Red Flags across topics. Unfortunately, treating repeated waves of COVID patients has taken its toll on the community's first responders and health care workers.
- **The community's changing image:** Our community continued to grow faster than much of the rest of the state, but that rate of growth is slower than cities seen as desirable places in which to live, such as Nashville, Tennessee, and Fayetteville, Arkansas. In recent years, leaders have put more focus on placemaking, developing distinctive amenities and offerings that not only bring skilled talent to the area but keep such professionals, entrepreneurs and innovators here.
- **Collective action:** For years, Springfield and Greene County—driven by nonprofits and the faith community—have provided a base of support for addressing problems and helping those in need. Through many organizations, we have volunteered time and donated resources to build community. The region now finds itself at a pivotal moment as longtime community leaders retire, and the next generation rises.
- **Ongoing investment:** Success requires investment, and over the past few years, Springfield and Greene County residents have supported numerous infrastructure initiatives: a \$168 million bond issue for Springfield Public Schools is adding new buildings and resources for more than 24,000 students and their families; the renewal of the 1/4-cent capital improvements sales tax and 1/8-cent transportation sales tax ensure investments in roads and capital projects over the next 20 years; and the adoption of sewer-rate increases will support wastewater, stormwater and overall water quality protection efforts into 2025.

## Rotary on the Road

By Sarah M. Watson

We are excited about kicking off the new Rotary year under the leadership of our President, Jim Hallam. It is sure to be a fun year!! Back by popular demand, we are continuing Rotary on The



[CJ Miles](#)  
iPast President



[Andrea Compton Brady](#)  
Assistant Governor

## Birthdays

Kris L Wolford  
August 12th

## Wedding Anniversaries

Road. The concept is to visit our fellow Rotarians and learn more about each other. We will fill in other months visiting and learning more about great places in our community. Below is the list of dates for Rotary on The Road.

Please let me know if you would like to host our club on one of these dates or if you know of a great place for us to visit!

July 26  
August 23  
September 27  
January 24  
February 28  
April 25  
May 23

Thank you for your continued commitment to Springfield Metro!

Cheers,  
Sarah Watson

## Committee Sign Up on DACdb

By Sarah M. Watson

At Springfield Metro we want to make all members fully engaged and the best way to do that is to sign up for a committee! We don't want to be a "Paul" (if you joined us at The Permit Shop you will get this) and we try to cut out unnecessary steps where we can. So please sign up for a committee using DACdb, using the following steps:



- Login to DACdb
- Click on My Club tab on the top tool toolbar
- Click on Club Committees
- Click on Committee Sign Up - located on the left side of the screen
- Click on the box for the committee you want to join.

EASY PEASY!!!

If you are unsure of what a committee does, please reach out to the committee chair, and they will be happy to explain.

## Enter Your Makeup on DACdb - It's EASY!



Have you visited another Rotary club or attended a committee meeting? You can easily enter your makeup on DACdb!! All you have to do is go to the 'My Data' tab, click on 'Enter MakeUp', enter the needed information, and you are done! It's easy!

## Springfield Metro Board Meeting

Springfield Metro Board meets the 3rd Tuesday each month

following our regular meeting. Board meetings are open to all Metro members and the board encourages you to visit! It is a great way to learn more about your club and to give your input on the operations of the club. Plus, it counts as a make-up if you need one.



## Need a Makeup

Perfect attendance is easy to achieve! If you have to miss a meeting and need a makeup, it's not a problem! Attend a meeting at one of our fellow Rotary Clubs, Rotaract, or you can do an online makeup.

Springfield Rotary and Rotaract Meeting Times:

Springfield Downtown Springfield Southeast  
Tuesday 12:00 PM Thursday 12:00 PM

Springfield North Springfield Sunrise  
Tuesday 7:00 AM Wednesday 7:00 AM

Rotaract Club of Springfield  
2nd and 4th Wednesday 12:00 PM

Locations for Club Meetings can be found in DACdb.

Online make ups can be made at the following link  
<https://www.rotaryclubone.org/makeups/articles/>

Make sure to enter your makeup in DACdb!

## Events

No Events found

