



# DESERTARIAN

SERVICE ABOVE SELF  
SINCE 1941

## JUL 27, 2022 QUICK GLANCE AT THIS ISSUE

MEETING HIGHLIGHTS

FOCUS ON THE  
FOUNDATION

TIM TALK

PENCIL IT IN

## UPCOMING SPEAKERS

Karl Kruger

### September 7

*Palm Springs Historical Society* – Renee Brown, Director of Education; Associate Curator at the Palm Springs Historical Society will speak on the topics of; “What the society does, how it accomplished their mission and relevant topics impacting the societies work.”

### October 26

*Eisenhower Lucy Curci Cancer* - Alison Sachs, Community Outreach, Patient Support Services, Director at Eisenhower Lucy Curci Cancer Center will speak on the topics of; “Where Cancer Care has come and the focus today. Proactive screening and follow-up treatment.”



## ANNUAL ISSUE

## MEETING HIGHLIGHTS

Reported by John Williams

Tim Ellis announced that the Jolly Jesters are planning to resume the fine program in September. Snoop on your Rotarian friends and report fineable activities to the Jesters. President Michelle reminded the members to please fill out the Member Satisfaction and Committee Assignment sheet and submit them to her. She also noted that auction items are needed for the District Gala featuring the RI President in October. Items are needed by the end of September. Jenny Hacker reported that the group at the successful Happy Hour last Friday is planning to schedule new events on the 3rd Thursday of each month. More details to follow.

### Speaker: Harry Barrett Jr., A.A.E.

Harry indicated that he really enjoys his job and is proud to be associated with PSIA. The airport's \$29 million budget is the largest department budget in the City of Palm Springs. The pandemic affected the airline industry and the operation of the airport. Passenger traffic through the airport is now back to pre-pandemic levels. 2.4 million passengers passed through the airport in the past year. As the airlines change their operations model and deal with the nationwide shortage of pilots, their efforts affect the airport. Flights are up with the four new airlines added in the past year and negotiations are underway to bring in new airlines.

The airport is affected by increased fuel costs, inflation/recession and pilot shortages. Harry is working in several areas: develop airport available commercial property; produce clean energy onsite; develop strategic partnerships; create more public/private partnerships; and reach out to the public to get public input and get the word out about airport goals.

## SUPPORTING THE FOUNDATION

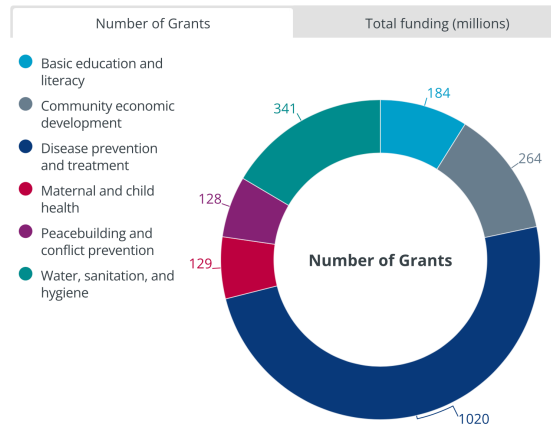
BOB ALLEN

"As Rotarians, we are expected to support The Rotary Foundation each year with a donation. One of our Club's goals is that every member donate something. The donations are invested for three years. Then 100% of the dollars are spent. 50% of the donations come back to the district and each Club can determine how they want the money spent.

If you have any questions, please ask Robert Allan for help. Thank you for your help in meeting our goal."

## FOUNDATION: FAST FACTS

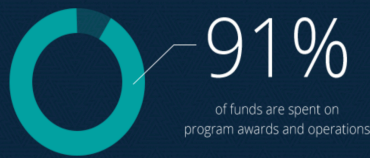
Global grants by areas of focus



ΩΩΩ



4  
star charity - Charity  
Navigator's highest level



The  
**Rotary**  
Foundation



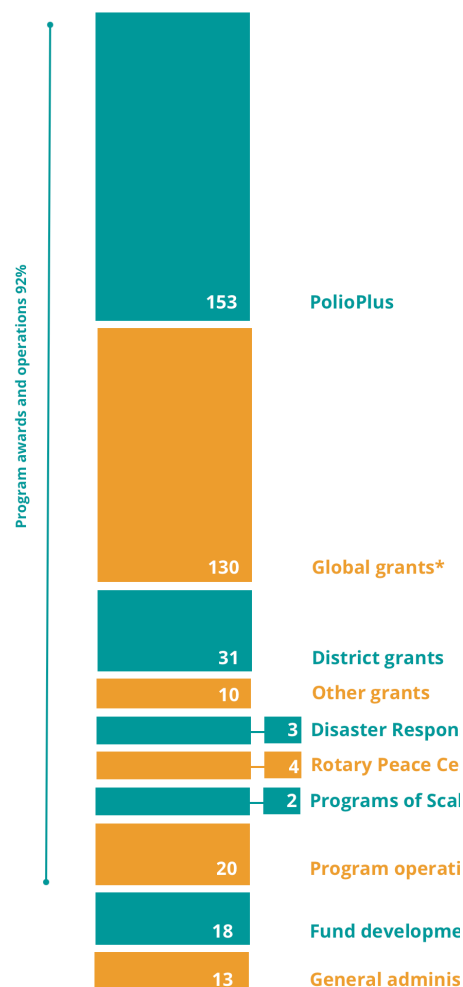
CLICK THE ARROWS TO ACCESS THE DOCUMENTS ONLINE:

**2021 ANNUAL REPORT** ►

**HOW GRANTS WORK** ►

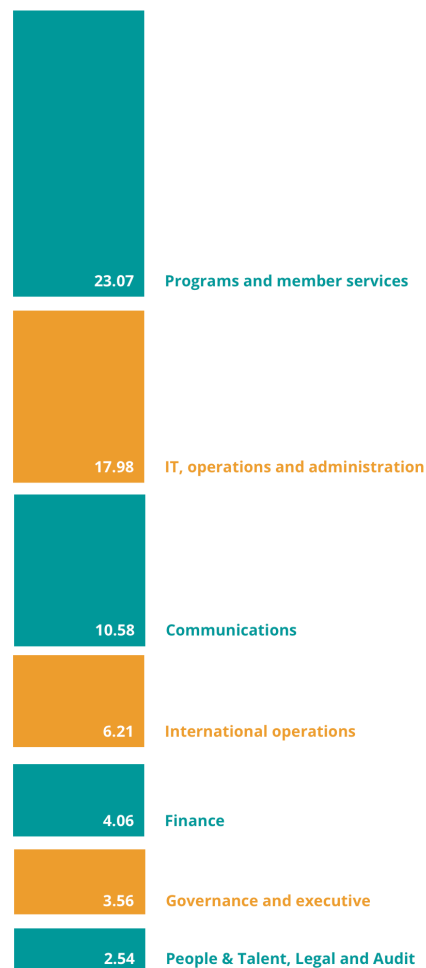
# FOUNDATION: DEEPER DIVE

## The Rotary Foundation Expenditures: \$384 million



## Supporting Rotarians

Our members pay **\$68** in membership dues to Rotary International. These funds are used to support our members, clubs, and districts. Here's how membership dues are allocated:



## Rotary International Statements of Activities

For the fiscal years ended 30 June 2020 and 2021 (in thousands of U.S. dollars)

Year to Date	Jun-20	Jun-21
<b>Revenues</b>		
Dues	\$82,205	\$81,794
Net investment return	3,135	2,989
Services and other activities	19,765	20,894
<b>Total revenues</b>	<b>\$105,105</b>	<b>\$105,677</b>
<b>Expenses</b>		
Operating	\$79,095	\$67,378
Services and other activities	18,326	26,174
Strategic Reserve	1,352	1,794
<b>Total expenses</b>	<b>\$98,773</b>	<b>\$95,346</b>
Currency exchange gains (losses)	\$(2,432)	\$542
<b>Change in net assets</b>	<b>\$3,900</b>	<b>\$10,873</b>
<b>Net assets - beg. of year</b>	<b>\$145,864</b>	<b>\$149,764</b>
<b>Net assets - end of year</b>	<b>\$149,764</b>	<b>\$160,637</b>

## Rotary International Statements of Activities

For the fiscal years ended 30 June 2020 and 2021 (in thousands of U.S. dollars)

Year to Date	Jun-20	Jun-21
<b>Revenues</b>		
Dues	\$82,205	\$81,794
Net investment return	3,135	2,989
Services and other activities	19,765	20,894
<b>Total revenues</b>	<b>\$105,105</b>	<b>\$105,677</b>
<b>Expenses</b>		
Operating	\$79,095	\$67,378
Services and other activities	18,326	26,174
Strategic Reserve	1,352	1,794
<b>Total expenses</b>	<b>\$98,773</b>	<b>\$95,346</b>
Currency exchange gains (losses)	\$(2,432)	\$542
<b>Change in net assets</b>	<b>\$3,900</b>	<b>\$10,873</b>
<b>Net assets - beg. of year</b>	<b>\$145,864</b>	<b>\$149,764</b>
<b>Net assets - end of year</b>	<b>\$149,764</b>	<b>\$160,637</b>

## T I M T A L K

A chat with Rotary Club of Palm Springs Foundation Chair Tim Ellis

*D. How can we inspire our members to participate in or even increase their contributions to the Foundation, especially since many of us have gotten hammered during the market downturn?*

TE: Rotarians are by nature very generous people. As such the Foundation offers Rotarians an opportunity to plan giving rather than *impromptu* donations. The Foundation is a registered nonprofit and as such donations are tax deductible. We also need gifts to the club which is not a nonprofit and therefore cannot be written off on your Taxes. The end of the year is a great time to donate.

One very easy way to donate to the Foundation is to write in a donation in your family will. This provides long range support without writing the check today.

*D. Rotarians are being encouraged to diversify our membership and the types of projects we do. And with the addition of the environment as an area of focus, how do you envision the types of grants of the future might change?*

TE: The Foundation reaches out to club members at the beginning of every year. The recipients do change from year to year, and we like to support efforts that Rotarians are involved with in other projects. We also donate to nonprofits that can also promote Rotary. A perfect example is we donated to PS Concerts and required that Palm Springs Rotary Foundation be a named sponsor of one of the concerts next year.

*R. What inspires you to lead the Foundation and how can members feel more engaged with the grant process?*

TE: I love to help others, and giving cash to nonprofits and student scholarships is so rewarding. The people you meet on this road completes the thrill! Our work is careful and we make sure the donations end up in the pockets that need the support.

## T H E W H Y ' S A N D H O W ' S T O G I V E

We have included two documents with this email that may be of interest. The first is the *Rotary Foundation Reference Guide* that tells all you may want to know about the Foundation, the grant process, and where your donation goes.

The second document is *Direct Enrollment Form* to use if you wish to contribute to the Foundation on an annual or recurring basis. Or, you can enroll online at [my.rotary.org/en/rotary-direct](http://my.rotary.org/en/rotary-direct).

## MEET YOUR TEAM

MICHELE NOBLEMAN, President  
KARL KRUGER, President-Elect  
ED MC BRIDE, Secretary/Treasurer  
STEVEN RICHITT, Public Relations Chair  
FRANK PEABODY, Membership Chair  
BOB ALLEN, Rotary Foundation Chair  
JACK FITZSIMMONS, Int'l. Service Chair, Desertarian Editor  
JUDY BRONSTEIN, Youth Services Chair  
PAUL RAFFER, M.D., iPast President  
JOHN FRITCH, Past President  
WALTER GENDELL, Board Member  
DENNIS HACKER, Board Member  
MARGE TAFT, Board Member  
JOHN WILLIAMS, Board Member  
TIM ELLIS, Ex-officio PSRC Foundation Chair

## JULY CELEBRATIONS

### BIRTHDAYS

JENNY HACKER – 07/10  
JIM DUNN – 07/14  
KARL KRUGER – 07/15  
WALTER GENDELL – 07/15  
FRANK PEABODY – 07/23

### ROTARY ANNIVERSARIES

DAN KELLER – 29 years  
NANDY KRUGER – 9 year

## PENCIL IT IN

**IMAGINE** THE POSSIBILITIES

*District 5330 Foundation Gala*

WELCOMING  
ROTARIANS and the COMMUNITY  
to this very special event!

**OCTOBER 8, 2022**

**5:30pm - 9pm**

AFTER PARTY: 9PM - 12 MIDNIGHT  
DRESS CODE: BLACK TIE OPTIONAL

Westin Mission Hills Resort  
71777 Dinah Shore Dr, Rancho Mirage, CA 92270

EARLY BIRD PRICING (UNTIL SEPTEMBER 9TH) - \$199 PER PERSON  
LATE BIRD PRICING (SEPTEMBER 9TH TO OCTOBER 8TH) - \$225 PER PERSON

HOTEL REGISTRATION - CALL 1-877-253-0081 AND USE CODE R02638  
OR VISIT [HTTPS://BOOK.PASSKEY.COM/GO/ROTARYDISTRICT5330](https://book.passkey.com/go/rotarydistrict5330)

\*ROOMS WILL BE \$199 PER NIGHT, PLUS RESORT FEES AND WILL BE AVAILABLE AT THAT RATE UNTIL SEPTEMBER 9TH

HONORED TO FEATURE  
KEYNOTE SPEAKER  
ROTARY INTERNATIONAL PRESIDENT  
**JENNIFER JONES**

REGISTER NOW

## THE DESERTARIAN WOULD LOVE TO HEAR FROM YOU!

### CONTACT

#### Website:

<http://therotaryclubofpalmsprings.org>

#### Email:

[Psrotaryclub886@gmail.com](mailto:Psrotaryclub886@gmail.com)

Or just grab Jack Fitzsimmons at a meeting.