



Hi, you lovely Rotarians.

Our guest speaker for our Lakeport Rotary Feb. 15 club meeting is Kathleen Terry. She was my sponsor getting into the Manhattan Beach Rotary Club years ago. She will join us via zoom.

**She will be speaking about Member engagement: The Key to Retaining and Increasing Members in Your Club**

**Is Your Club Meeting the Needs of Current and Prospective Members? or Member engagement: the Key to Member Retention and Growth**

**I thought this might be something our club would be interested in hearing and hope that we have a good turnout via zoom and in person to join us on Wednesday, Feb. 15.**

**KEEP IN MIND THIS IS A DIFFERENT ZOOM LOGIN. NOT OUR USUAL LAKEPORT ROTARY ZOOM INFO. LOGIN INFO AT BOTTOM OF THIS EMAIL.**

**I also hope to entice Kathleen to visit Lake County and do one of her disc and goal setting presentations for all of us. I will offer her lodging, breakfast in bed, and lots of wine. Kathleen has worked with major companies, both domestic and internationally.**

**Thank you. Happy Valentine's Day.**

**Mark**

**310-849-9181**

**Bio and pic:**

Kathleen Terry has been a Rotarian for 14 years and was the past president of the Manhattan Beach Rotary Club. After finishing her President year, she volunteered to help the District and has served in a number of roles within District 5280 and the zone. Her favorite roles have been involved with working with clubs in how to increase and maintain membership. Over the last two years, she has been a member of the Zones New Club Development Task Force and is also actively involved with starting new clubs in District 5280. In her work life she is the Founder of Participative Management Systems and is well known for her high-impact leadership seminars and workshops which she presents both nationally and internationally. In addition to her work in Rotary, Kathleen is also a strong advocate and believer in the importance of civic engagement and being of service to her community. She has facilitated three Community Leadership

## Club Leaders



[Laura McAndrews](#)  
[Sammel](#)  
President



[Mark Lipps](#)  
President - Elect



[Martin Diesman](#)  
Treasurer



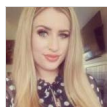
[Kelly Butcher](#)  
Club Director



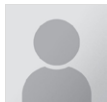
[Pamela Harpster](#)  
President - Nominee



[David Herrick](#)  
Club Director



[Faith Cheyenne Hornby](#)  
Club Director



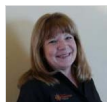
[John Lawson](#)  
Club Director



[Marie Schrader](#)  
Club Director



[David Paul Schwenger](#)  
Club Director  
Membership Chair



[Denise Combs](#)  
Rotary Foundation  
Chair



[Bruce Maxwell](#)  
Rotary Foundation  
Chair



[Jeffery B. Warrenburg](#)  
iPast President



[David Moon-Wainwright](#)  
Assistant Governor

## Birthdays

Marie Schrader  
February 21st

Natasha Levchenko  
February 27th  
Elizabeth Dittmar Davis  
March 9th  
David Moon-Wainwright  
March 14th

Programs in the South Bay and was honored by the City of Manhattan Beach for her ongoing commitment to developing leaders within the community. Today Kathleen will share with us How To Grow Rotary: Exploring New Club Models



## Rotary Meeting

Wednesday, February 15?12:00pm – 1:00pm

[Join Zoom Meeting](#)

Location:

<https://us02web.zoom.us/j/8086990361>

Join Zoom Meeting <https://us02web.zoom.us/j/8086990361> Meeting ID: 808 699 0361 One tap mobile +16699006833,,8086990361# US (San Jose) +16694449171,,8086990361# US