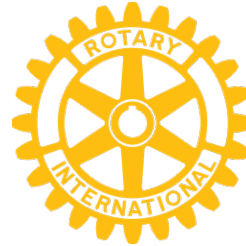




Rotary

Club of Coeur d'Alene



Speakers

Club Leaders



Doug Rupiper
President



Ashley Lenz
President-Elect



Michael Nail
Treasurer



Julie Amador
Club Director



Kim Jane Edmondson
Club Director



Rebecca Eyman
Secretary
Club Director
Membership Chair



Emily Moses
Club Director
Community Service Chair



Mark Olson
Club Director

Rotary Bulletin 02/02/24

NEXT MEETING February 9, 2024

Dr. Dennis Becker, University of Idaho College of Natural Resources - Community Engagement Initiative

JOIN MEETING VIA ZOOM: click [here](#).

Presided.....PRESIDENT DOUG RUPIPER

Invocation.....DON DUFFY

Greeter.....RYAN JOHNSON

Sergeant at Arms.....DEAN HAAGENSON

VISITING ROTARIANS and GUESTS

David Keyes, Sandpoint

Stephen Buckner, guest of Linda Coppess

Sally Nowak, guest of Linda Olson

ANNOUNCEMENTS

The program on February 23 will feature Tom Mueller, co-founder of Space X and hometown St. Maries kid! We will need a firm RSVP for that meeting by Friday, February 9.

Coeur d'Alene™ Irish is back on March 16th from 6-10pm at the CDA Resort. Tickets are \$50 for adults and \$25 for kids and can be purchased on our website [here](#) or on Eventbrite (there will be a fee). There will be a DJ and entertainment, Irish food and games. Sponsorships from \$500-\$5,000 are available. Contact PRESIDENT DOUG at sodakhawk@gmail.com for sponsorship.

BIRTHDAYS

02/04 Brenda Bookholtz

02/05 Lora Whalen

02/06 Sam Hunter, Kristi Scott, Joe Righello

HAPPY DOLLARS

LUKE RUSSELL gave a cheers to Groundhog's Day

LES ATCHLEY gave \$20 to celebrate NAOMI BOUTZ, the waitress at the Wine Cellar that knew he and Janet so well and even remembered the wine that they originally ordered.

RICK RASMUSSEN gave \$20 to thank the club for fundraising and the grants committee for awarding the CHS Booster Club funding for handicapped bleachers. They are installed and working well!

STEVE ROBERGE gave \$10 to celebrate grandbaby #10 being born last week.

KIM EDMONDSON celebrated that her beloved 31 year old horse did not need to be put down, but is rather recovering well from an injury.

PROGRAM

DON DUFFY introduced Erik Ketner and Mary Rehnberg with Panhandle Health District. Erik and Mary discussed the Silver Valley lead abatement program and the partnerships with Idaho Department of Environmental Quality (IDEQ), the Environmental Protection Agency and the CDA Trust, which is a representative for the mining companies.

Panhandle Health District (PHD) was established in the 1970s and is charged with having rules in place to represent regional populations dealing with the Bunker Hill Site clean up and protecting the Prairie Aquifer. PHD works with regional DEQ and local municipalities to execute institutional controls programs and manage components of the EPA Superfund Site, which is one of the largest in the country.

To learn more you can view the PHD slidedeck [here](#).

PROGRAMS for FEBRUARY

02/16/2024 Robert Williams, Ph.D., Exec. Director American Wagyu Association

02/23/2024 Tom Mueller - Founder of Impulse Space /Formerly founding employee of SpaceX

In Service,

BRITT TOWERY



[Larry Riley](#)
Public Relations Chair
Club Director



[Steven Roberge](#)
Club Director
Assistant Governor



[Ann Thomas](#)
Club Director
Membership Chair



[Britt Towery](#)
Bulletin Editor
Club Director



[Chris L. Cheeley](#)
Sergeant-at-Arms



[Hank Martin](#)
Rotary Foundation Chair



[Claudia Jean Brennan](#)
Special Projects Chair



[Larry Gill](#)
Community Service Chair



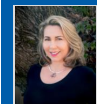
[Robert William Smee II](#)
Veterans Committee Chair



[Ian Hicks](#)
International Service Chair



[Alex Stanton](#)
International Service Chair



[Candace Louise Godwin](#)
iPast President