

SPARKS



Next Meeting: Thursday, June 11, 2015

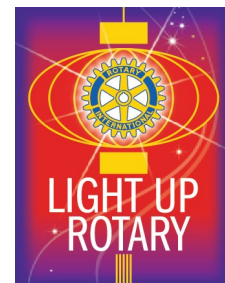
Guest Speakers: Karen Williams & Rip Rippetoe
*President & CEO of Louisville Convention & Visitors Bureau
 and President & CEO of Kentucky State Fair Board*

Topic: Convention Center Closing

Introduced by: Mary Michael Corbett

Archibald Room, Galt House West, 3rd floor

Buffet Opens: 11:30 am / Meeting Begins: 12:10 pm



Louisville native Karen Williams embodies southern hospitality. She's been a leader in the hospitality industry for over 32 years—a prosperous career that began with a sales manager position at the Ritz-Carlton Hotel in Atlanta. Trading the Wall Street sales calls for worldwide travel, Karen was promoted to director of corporate sales, where she helped open 18 hotels worldwide under the Ritz-Carlton flag.

After returning to her roots, Karen devoted the next 23 years to the Louisville Convention & Visitors Bureau (LCVB) as executive vice president. While her primary role was to oversee the bureau's sales team, Karen's accomplishments reached far beyond this.

In March 2014, Karen was named President & CEO of the LCVB. As President & CEO, she is responsible for all administrative, operating, sales and marketing functions. The LCVB represents the city of Louisville at industry tradeshows and markets the area as a premier venue for conventions, meetings and leisure travelers.

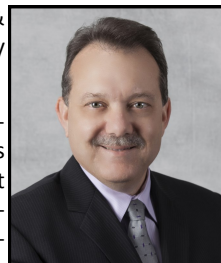
Karen's leadership role also includes serving on several boards. In recognition of the diverse achievements and longevity of her hospitality career, Karen received the Dan Mangeot award in 2012. The award is presented each year to an individual who has greatly contributed to Louisville's tourism initiatives.

Clifford "Rip" Rippetoe was named President & CEO of the Kentucky State Fair Board in January 2013.

A year veteran in tourism development, the Oklahoma native previously worked for the Las Vegas Convention Center and Cashman Field, the Salt Palace Convention Center, the Salt Lake Convention & Visitors Bureau and GES Exposition Services. He launched his own consulting firm, Rippetoe Solutions Group, to focus on creating efficiencies and productivity for public assembly facilities.

As Kentucky State Fair Board President & CEO, Rippetoe is focused on the purpose, promise and core values for the agency. "Advancing Kentucky's convention, tourism and agriculture industries is our purpose, and our promise is to deliver world class service to our clients and their attendees so that they will return and invest further in our community and our commonwealth."

Rippetoe is a member of several professional organizations, including the International Association of Exposition Exhibitors, International Association of Venue Managers, National Association of Sports Commissions and the Religious Conference Management Association. Locally, he serves on the board of the Kentucky Derby Festival, Louisville Convention & Visitors Bureau and the Louisville Sports Commission.



Inside this issue:

Meetings & Events	2
Make Secure Payments Online!	2
Rotary Fund Investment Report	1 - 2
June 4 Meeting with KSU Pres. Ray Burse	3
Repair Affair - June 13	3
<i>Behind the Scenes Tour at Louisville Zoo!</i>	3
SIP 'n SWAP Wine Party at Barney Sutton's residence!	3

FIFTH THURSDAY FORUMS TO BEGIN IN JULY

"Conversations About Aging"

As the result of a recent survey, the Lifeline Committee will offer 'Fifth Thursday Forums' for hot topics about aging. All interested members are invited to attend. Details will be available soon!

Birthday Table

Joe Kutz, M.D.	June 11	Kevin Connelly	June 16
Bob Patterson Jr.	June 11	Julie Guenther	June 16
Julie Fadel	June 12	Allan Morris	June 16
Arne Judd Jr.	June 12	Joe Schildt	June 16
Sam Clemmens	June 13	Debe Skidmore	June 16
Joanna Haas	June 13	Jim Smith III	June 16
Jay Gatrell Ph.D.	June 14	Glen Stuckel	June 16
Jay Vandertoll	June 14	Donna Hargens	June 17
Jay Norman	June 17		

Please sit at one of the Birthday Tables on June 11.



ROTARY FUND INVESTMENT REPORT



Our Rotary Fund asset allocations and investments are guided by a Rotary Fund Investment Committee composed of Club members with financial expertise. Funds are invested in a variety of available mutual funds in accordance with an allocation policy adopted by the Fund Board of Directors. Through the end of April, total assets were \$2,169,382. Investment Performance continues to be good, with average annual returns over 11 percent in the last three years. This performance is in line with comparative index composed of funds with a similar investment allocation. [CLICK HERE](#) for more information.

(Continued on pg. 2)

PROGRAM SCHEDULE

June 25 — Rotary Leadership Turn-over Extravaganza! *New leadership for the club's FY 2015-16 will be introduced in a 'never done before' way! Don't miss this!!*

July 2 — Guest Speaker TBA (*Honor Guard will be present*)

July 9 — David Phemister (State Director KY Chapter of Nature Conservancy)

July 16 — Mary Gwen Wheeler (*Executive Director of 55,000 Degrees*)

July 23 — Jared Arnett (*Founding Executive Director of SOAR, Shaping Our Appalachian Region, Inc.*)

July 30 — Dr. Kevin Cosby (*St. Stephens Sr. Pastor / Simmons College of KY President / Community Initiatives*)

Nov 5 — District Governor Mike Kull (*District Assembly*)



THE HEALING PLACE

"the best recovery program in the world"

— **Dr. Burns Brady**
nationally known expert in addiction medicine

(502) 585-4848

www.thehealingplace.org Jay P. Davidson

MAKE PAYMENTS SECURELY ONLINE!

Pay for events or membership dues:

<https://www.louisvillerotary.org/make-a-payment>

No special login/password required.



Erskine H. Courtenay

Financial Advisor

(502) 329-5109

101 Bullitt Lane, Suite 400

Louisville, KY 40222

www.fa.ml.com/erskine.courtenay

Merrill Lynch Wealth Management makes available products and services offered by Merrill Lynch, Pierce, Fenner & Smith Incorporated, a registered broker-dealer and member SIPC, and other subsidiaries of Bank of America Corporation.

© 2012 Bank of America Corporation. All rights reserved.

AD-10-12-1135

ARI241F2-07-12

Merrill Lynch
Wealth Management

Bank of America Corporation
Code 44408PM-1012

Canon

CECM

GEORGE BRAKMEIER, III

Web: centralelectronic.com

ADVANCED SERIES COPIERS & PRINTERS

B/W * Color * Multi-Functional * Networked

AUTHORIZED SALES & SERVICE

CENTRAL ELECTRONIC OFFICE MACHINES

124 South First Street

(502) 587-6360

"At Strothman and Company, we help entrepreneurial businesses grow. At every stage. Every day."

Ray Strothman
Managing Partner



Strothman+Co

Certified Public Accountants and Advisors

■ Rotary Fund ■ Index (S&P 500)

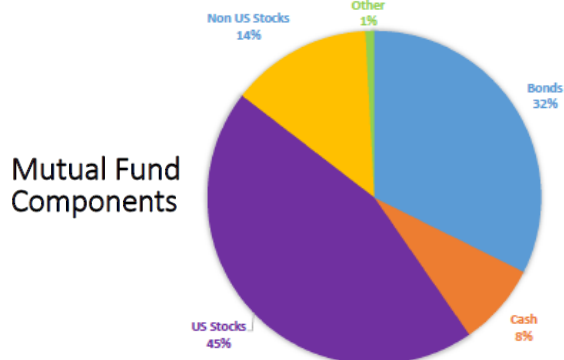
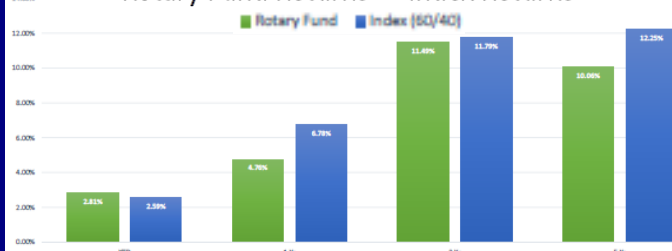
1600 Waterfront Plaza
502.585.1600

325 Main Street
info@strothman.com

Louisville, Kentucky 40202
www.strothman.com

Rotary Fund Investment Report (Cont'd from pg. 1)

Rotary Fund Returns vs Index Returns



Rotary Fund of Louisville, Inc. component percentages are unaudited as of April 30, 2015.

"THAT'S ENTERTAINMENT!"

See page 3 of this newsletter for details about ...

- Rotary Evening at the Ballpark (June 16)
- SIP 'n SWAP Wine Party (June 20)
- After Hours Behind the Scenes Tour at Louisville Zoo (July 15)
- September 27 (Sunday)** — End of Summer Farm Party at Stet Stetten's Springdale Woods Farm. (Details coming soon.)

Check out these events!

WE SAVE OUR CUSTOMERS AND PERIOD!



Call today for a no-risk, no-obligation consultation and find out how much time and money you can save.

UNISTAR
PURCHASING SOLUTIONS

Spent Less. Get More.

1.866.UNISTAR
UnistarPurchasingSolutions.com

[GLI]

GREATER LOUISVILLE INC.
The Metro Chamber of Commerce

IN THE BUSINESS OF BUSINESS
Simply put, that's what we do every day.

EXPLORE MEMBERSHIP OPTIONS TODAY!



EMILY HART
Development Manager
502.625.0045 or
ehart@GreaterLouisville.com

GreaterLouisville.com/Join

June 11, 2015 Rotary Meeting



Dr. Tony Newberry and
George Merrifield with
KSU President Ray Burse

President Kevin rang the meeting to order in Grand Ballroom C, as Don Kohler gave the invocation and Tracey Clayton led the Pledge and Four-Way Test. Rotarians introduced their guests. Kevin pointed out the "What is Rotary?" Table for prospects, and reminded us to introduce ourselves and welcome new members with pink name badges. Kevin announced proposed Bylaws changes have been emailed, and will be voted on at the June 18 meeting. Kevin thanked Alice Bridges and volunteers at the Food Literacy Project last Saturday, and he invited members to welcome veterans returning from the Washington Honor Flight at 10 p.m. this Saturday at the Airport. Clint Scharff promoted the children's book project; Mike Fallot hammered home the June 13 Repair Affair; and Greg Braun intoxicated us with the prospect of the Sip 'n Swap Wine Party on June 20 at Barney Sutton's residence.



Rev. John Jennings, KSU President Ray Burse
and President Kevin Wardell



Western High School Interact Club members with Rick Moir
and Principal Michael Newman

Western High School Principal Michael Newman introduced four sharp Rotary Interact Club members from Western and Rick Moir. He reported enrollment is up 38 percent from two years ago, and the Junior Class, first to be eligible for the Rotary Promise Scholarship, has the highest test scores in school history.

Rev. Robin Jennings introduced his Centre College classmate and speaker, Ray Burse, president of Kentucky State University. Burse said Kentucky State is not an all-black college, but is Kentucky's most diverse, with 43 percent non-white students. Founded for training and development of African-American teachers in 1886, KSU became Kentucky's second land grant institution in 1890, (UK, 1862) and its cooperative extension work in fish farming is world famous.

Burse said Kentucky State now offers majors in 30 disciplines, plus masters' programs and this year, its first doctorate. He said the average age of this year's graduating class was 29, and the student body is 63 percent female, reflecting a national "crisis in male achievement." Therefore, he touted the unique program with Toyota Motors, in which students with qualifying GPA and ACT scores can get a full ride through KSU, summer employment at Toyota and a guaranteed job there when they graduate. KSU President Burse also shared about their Division of Aquaculture, a leading research and extension program in the development of alternative culture species, which now offers graduate and undergraduate courses. The KSU Division of Aquaculture website is: <http://www.ksuaquaculture.org>. Burse cited a financial crisis in Kentucky public higher education, due to eight years of state cuts totaling \$173 million. Public college presidents are urging legislators to restore these funds. "When will Kentucky make the right decision to invest and power the economic development engine in our state," he challenged. The meeting was adjourned after an unsuccessful Pot of Gold drawing.



Larry Caruso
during Q&A

— Respectfully submitted by Lelan Woodmansee



SATURDAY, JUNE 13 (8a - 1p)

Flyer w/ more info at [THIS LINK](#)

Location will be provided

NO SPECIAL SKILLS NEEDED!

Repair Affair is a community-wide program organized by New Directions Housing Corporation to provide basic home repairs to low income and elderly homeowners.

To sign up, contact Mike Fallot

mike.fallot@ecomtek.com 400-3011

SIP 'n SWAP Wine Party

June 20 (7pm to 10pm) \$25/person

Barney Sutton's home at 1233 So. 6th Street

Individuals bring two identical bottles, take one home; couples bring two identical bottles, take one home (approx. \$25). Sample 20+ bottles of wine. Casual dress. Flyer at [THIS LINK](#).

To register, email: events@rotary45.org

**Limited to first 40 who register by
emailing events@rotary45.org!**

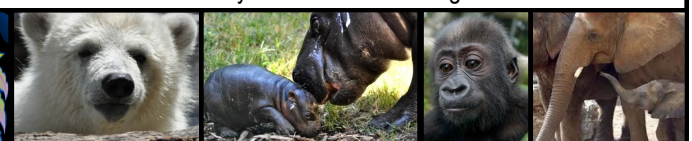
**Annual Rotary Evening
at the Ballpark
Tuesday, June 16, at 7pm**



BEHIND THE SCENES TOUR at the LOUISVILLE ZOO!

Wednesday, July 15 - SAVE THE DATE!

Join Rotarians/guests for a 'BEHIND THE SCENES' tour led by Louisville Zoo Director/Rotarian John Walczak. BBQ meal w/ sides included. Adults only. More details coming soon!



Cave Hill Cemetery

Offering traditional burial spaces, mausoleums, cremation options, and monument sales in Kentucky's premier cemetery

502-451-5630 Lee Squires www.cavehillcemetery.com

MENTAL HEALTH • DEVELOPMENTAL SERVICES • ADDICTION TREATMENT

HOPE

HAPPENS HERE

sevendcounties.org

589-1100 or 1-800-264-8799

Annette Grisanti

Rodes
For Her

The Rodes Building • 4938 Brownsboro Rd.
Louisville, KY 40222 • 502-753-1055

401 West Main Street, Suite 810
Louisville, Kentucky 40202
Phone: 502-589-1800 / Fax: 502-589-1636
Email: rotary@rotary45.org

ROTARY CLUB OF LOUISVILLE OFFICERS:

Kevin S. Wardell President	Craig W. Scherman Secretary
Gregory P. Braun First Vice President	John W. Hampton Treasurer
Julie H. Schmidt Second Vice President	Thomas H. Bohnert Sergeant-at-Arms

DIRECTORS:

Richard Brien	Charles K. McClure III
Walter R. Coe	Kenneth N. Middleton
Alan J. Griffes	Michael Ray Shackelford
Kenneth R. Grossman	Susan M. Smith
J. Tracy Holladay	

ROTARY FUND OF LOUISVILLE OFFICERS:

Walter R. Coe Chair	Craig W. Scherman Secretary
Julie H. Schmidt Vice Chair	John W. Hampton Treasurer

DIRECTORS:

Paul J. Bickel III	Robert M. Slider
Gregory P. Braun	Kevin S. Wardell
Aimee L. Johnson	

EXECUTIVE DIRECTOR
Debe D. Skidmore

SPARKS IS A PUBLICATION OF
THE ROTARY CLUB OF LOUISVILLE, INC.

COMMUNICATIONS:

Luke B. Schmidt — Chair
Ashley Brauer — Vice Chair
Debe Skidmore — SPARKS Managing Editor

Videography/Photography
Mark Cowherd and Maynard L. Stetten, M.D.

Kentuckiana
Comfort Center INC.
A LINC Service Contractor

Heating • Cooling • Air Quality Specialists


2716 Grassland Drive
Louisville, Kentucky 40299
DAVID GARLAND
General Manager
dgarland@kccorowp.net (502) 491-9880
Fax (502) 493-5775

We turn jeans into jobs
to change lives.



Amy Luttrell, President & CEO
David Cobb, Vice President
(502) 272-1700 www.goodwillky.org

"We're the people...people"



AHEAD
HUMAN RESOURCES

485-1000
www.aheadhr.com
Bill Bellis

Staffing and Human Resource Solutions
Kentucky, Ohio, West Virginia, Connecticut,
Wisconsin, Nebraska, Texas



HOSPARUS
Because the end of life is part of living

A non-profit
hospice organization

502-456-6200
www.hosparus.org

Phil Marshall,
President and CEO

Serving Barren River, Central Kentucky,
Louisville and Southern Indiana

BOOK PUBLISHING
+ MARKETING + PACKAGING

OLD
STONE
PRESS

JOHN H. CLARK
John@JHClarkandAssociates.com
502.693.1506
OldStonePress.com

VOLUNTEER as a MENTOR Only 2 hrs per month
Contact Rick King at 817-6086 or rickking@eaton.com

"Thanks to Healthy Lifestyle Center, I'm
in better shape than when I was 20."

Learn more at
KentuckyOneHealth.org/HealthyLifestyle
or call 502.581.0110



KentuckyOne Health®
the one name in health care.

FAMILY VALUES
AT THE CORPORATE LEVEL

Since 1987

812-256-0400

www.misterpexpress.com

