



Club Calendar Link

Dec 17 Committee Meeting Rooms

Rotaract-Interact Mtg in the Laffoon Room - 11:00am

Membership Development Mtg in the Willis Room - 11:00am

Rotary Promise Scholarship Mtg in the Nunn Room - 11:00am

UPCOMING MEETINGS

December 24
No Meeting

December 31
No Meeting

January 7
Bob Bordogna
Annual Stock Market Report

January 21
Mayor Greg Fischer
State of the City Address

January 28
TBA

February 18
Bill Lamb
Leadership / Media

February 25
Kate Latts & Andy Shapira
"Heaven Hill Brands ... The Nation's 6th Largest Distilled Spirits Supplier"

March 10
Speaker TBD
Location: Speed Museum
(prior to public re-opening)

L.B. Schmidt & Associates, LLC

Luke B. Schmidt



NORTON
HOSPITAL

Stephen

Williams
Kevin Wardell
Matt Ayers



December 17, 2015

TORI MURDEN McCLURE

Explorer, Author, Attorney & President of Spalding University

TOPIC: *PEACE, GOODWILL & ROTARY*

Galt House East, Grand Ballroom C, 2nd Floor
Buffet opens at 11:30 - Meeting begins at 12:05

Tori is the President of Spalding University in Louisville, Kentucky. She is best known as the first woman and first American to row solo across the Atlantic Ocean. She rowed a twenty-three foot boat alone and without physical support a distance of more than 3,300 miles. Tori was one of two women and six Americans who were the first women and first Americans to travel over land to the geographic South Pole, skiing 750 miles from the ice shelf to the pole. An avid mountaineer, Tori has climbed on several continents and she was the first woman to climb Lewis Nunatuck summit in Antarctica. She is an Emergency Medical Technician in both urban and wilderness areas. She is also a graduate of the National Outdoor Leadership School semester courses in Alaska and Kenya

Tori earned her A.B. from Smith College, a Masters in Divinity from Harvard University, a Juris Doctor from the University of Louisville Brandeis School of Law, and a Masters of Fine Arts in Writing from Spalding University. She was admitted to the practice of law in 1995 and is a lawyer in good standing with the Kentucky Bar Association. Professionally, Tori has worked as Chaplain at Boston City Hospital, the executive director of a shelter for homeless women, as a public policy assistant for the Mayor of Louisville, and she worked for Muhammad Ali to assist with early efforts to create the Muhammad Ali Center in Louisville. Tori serves on the Board of Trustees for Smith College and for the National Outdoor Leadership School. ([more here](#))

Ugly Holiday Sweater/Necktie Contest!

Only one more chance to win! Wear your ugliest holiday sweater or tie at the Dec. 17 meeting, and you could win a prize! Get your ugliest tie and/or sweaters ready and join the fun!



Winners at last week's meeting were Julie Scoskie (left) and Rick Smith (right).

It was not an easy task for judges Barbara Sexton Smith and Barry Denton to determine the winners, with so many who came prepared to compete!

Below are just a few photos. You can check out the rest of them on our Facebook page!



Member Spotlight

KENNETH "KEN" GROSSMAN, Ken Grossman, a fourth generation clothier with over 35 years experience in the men's clothing industry, is the **Founder and Owner of Executive Image Custom Clothiers**. From 1898 – 1995 Kenneth's family business Loevenhart's was among the pre-eminent men's clothing stores in the Kentuckiana Region. In 1996 Kenneth created Executive Image, a concierge men's custom clothing service, to give the busy professional unlimited options in the design and selection of the some of the world's finest tailored clothing and





Coe

Randy



Brinkley
Alice Bridges
Rick Smith

Ruth



Greg Braun 817-8224

Birthdays

Monty Boyd - Dec 23
Nima Kulkarni - Dec 23
David Wood - Dec 23
Bernie Block - Dec 24
Dorn Crawford - Dec 25
Bill Smithwick - Dec 25
Mary Michael Corbett - Dec 27
Bob Michael - Dec 27
Michael Vincenti - Dec 28
Mike Fisher - Dec 30
Ed Jerdonek - Dec 30
David Dick - Dec 31
Bob Royer - Jan 2
Hal Hofman - Jan 3
David James - Jan 4
Rene Brown - Jan 6



Please join the Birthday Table
at this week's Rotary meeting and be
recognized!

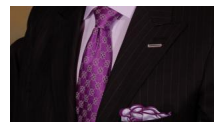
Club Officers

Greg Braun • President
Alice Bridges • President-Elect
Kevin Wardell • Past President
Dick Brien • Vice President
Ken Middleton • Vice President
Luke Schmidt • Secretary
Tom Bohnert • Treasurer

Club Directors

Muhammad Babar, MD
Barry Barker
Mary Michael Corbett
Lukas Dwelly

sportswear. Kenneth brings the store to you, so you can build your wardrobe in the convenience and comfort of your office or home. Executive Image is built on the principles of honesty, quality, service, and value – the same principles that were successful for the Loevenhart family for almost 100 years. An award winning designer, Kenneth has trained under the finest clothiers in the industry and been certified by the Custom Tailors and Designers Association as a "Master Custom Clothier". Kenneth has spoken to civic groups, professional organizations, and management teams regarding how to dress and present a professional image ([more here](#))



DICK BRIEN is the **Director of Training for the International Center for Corporate Learning (ICCL)/Dale Carnegie Training at Sullivan University**. In 1992 after four years of owning restaurants in Norfolk Virginia, he moved to Louisville to help start ExecuTrain of Louisville as the General Manager. There he helped build the company from startup with two computer training classrooms to six on-site classrooms and two off-site rooms at customer locations. He left to become the General Manager of HTP in Bullitt County and then took over as Corporate Training Manager for the parent company. For 11 years he traveled for 41 weeks a year training managers and trainers in the company's U.S. and U.K. locations. He has been a Trainer and Master Trainer for Dale Carnegie Training; Six Sigma Master Black Belt; and has achieved Global Master Trainer. Dick received his MBA from Webster University, and B.S. in Education from the State University of New York at Brockport. He was an Air Force Pilot and logged over 700 combat hours in Viet Nam. ([more here](#))



Service Opportunities



Help Ring the Bells for the Salvation Army



It's not too late to volunteer! There are a few openings left on **Dec 19** at Holiday Manor Kroger (US42) during a scheduled timeframe between 9am - 4pm.

To select a timeslot, sign up here.

Questions? Email: gbrakmeier@centralelectronic.com

Thank You for Your Lifetime Service Award Nominations!

Nominations were received for deserving, eligible Rotarians to receive the Lifetime Service Award, but the Awards Committee could select only one. The LSA recipient will be announced at on January 21, the meeting when Mayor Greg Fischer will provide the 'State of the City' address.

Special thanks to all those who submitted great nominations! - Julie Schmidt, Awards Committee Chair

Member Opportunities



CHANGING LIVES

THE ROTARY FUND OF LOUISVILLE

Make your donation before the end of December to support the work and projects of our Club.

Your gift will make a lasting impact in our community and beyond. The ROTARY FUND OF LOUISVILLE is our club's 501(c)3 organization which financially supports many worthy projects each year. Please consider making a donation. Questions? Contact Executive Director Debe Skidmore (rotary@rotary45.org / 589-1800). Access the donation form at [THIS LINK](#).

BUSINESS SYNERGY

Wednesday, February 3 from 5-7 pm

KentuckyOne Healthy Lifestyle Center, 2401 Terra Crossing Blvd. (Off Old Henry at the Gene Snyder)



President-elect Alice Bridges will host the next Business Synergy event at KentuckyOne's new Healthy Lifestyle Center located at Medical Center Jewish Northeast. There will be socializing and networking, free hors d'oeuvres, complimentary chair massage, acupuncture and genetic testing for coronary artery disease. Come and see firsthand how fitness programming coordinated by nurses and exercise physiologists can improve health. This is a free event for

Rotarians and a great opportunity to introduce a prospective new member to our Club. RSVP to events@rotary45.org

Rotary International Matching Gifts Campaign - Deadline is Dec 14



Tracy Holladay
John Jennings
Mac McClure
Michael Ray Shackelford

Fund Officers

Kevin Wardell • Chair
Alice Bridges • Vice Chair
Luke Schmidt • Secretary
Tom Bohnert • Treasurer

Fund Directors

Paul Bickel III
Greg Braun
Dick Brien
Aimee Johnson
Ken Middleton
Bob Slider

Rotary Club of Louisville
Rotary Fund of Louisville
401 West Main Street, Suite 810
Louisville, KY 40202
502-589-1800
rotary@rotary45.org

Executive Director
Debe Skidmore

Administrative Assistant
Dawn Hodsdon

Member Database
www.dacdb.com/rotary

Club Website
<https://www.louisvillerotary.org>



Visit M.dacdb.com

You can access our Club calendar, member contact info, and more anywhere anytime on your smartphone! It's more up-to-date than your membership roster.

Scan Your Badge

It is important to always get your badge scanned when you attend a meeting. Thanks!

You can help make our world a better place through a gift to Rotary and become a Paul Harris Fellow--a recognition given for those who contribute \$1,000 or more to The Rotary Foundation Annual Programs Fund, PolioPlus Fund, or the World Fund, or as a sponsor portion of a Foundation grant. An email was sent on Nov 16 with information about this campaign. Rotarians who contribute at least \$100 by December 14 can potentially earn matching points toward Paul Harris Fellow status. But act quickly as only 50,000 points are available. Contact Maria Smith, Foundation Committee Chair, if you have any questions. (msmith@hhlou.org)



ROTARY LEADERSHIP INSTITUTE

Saturday, January 9 from 8am-3pm

Lexington • Continental breakfast and lunch included



Want to learn more about Rotary? Are you interested, willing, and have the potential to engage in future club leadership as a *Committee Chair, Vice Chair, Board member, Vice President, or President*? This free event is an important stepping stone for your future involvement. For more details and how to register, check out [this link](#).

AGING WELL Series • Thursday, March 31

Geriatric psychiatrist Dr. David Casey will present immediately following the luncheon meeting on March 31. He will be ready to answer any questions Rotarians and guests may have.



Social Media & Web

Connect with Social Media

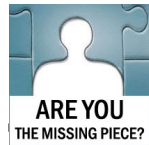
Connect to fellow members using our Club's social media platforms: Facebook, Twitter, and LinkedIn. Your participation will make it dynamic! Join in on discussions, post photos, and celebrate fellow Rotarian's accomplishments. LinkedIn is for members only to allow private discussions and can be found by searching "Louisville Rotary Club" in the category "Groups." Then click the yellow "join" button. You can also send photos, articles, featuring Rotarians and other news to Executive Director Debe Skidmore at rotary@rotary45.org and to Ashley Brauer at Ashley@guthriemayes.com. We need members who want to post, too! If you'd like to help, please contact Ashley or Debe.



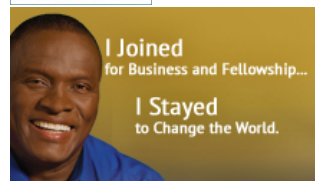
Join the Member Marketplace

Join our Club's new virtual Marketplace and showcase your business or organization through this new members-only service. To showcase your business, [click here for details](#).

New Members are the Lifeblood of our Club



Do you know someone who would make a great member of our Club? We offer a complimentary lunch for prospective new members who participate in the brief "What is Rotary?" session held immediately after every Thursday Rotary meeting at a table inside the meeting room. It's easier than ever for you to invite a friend or colleague. Check out our membership criteria [here](#).



ASK YOURSELF THIS QUESTION

By Randy Fox, District 6710 Membership Chair.

If you are reading this brief note about club membership, you have probably been in Rotary a good number of years. In fact, for some of you, it may be decades. So, my question to you is this: **Would you join your Rotary Club today, if you were not already a member?**

I was challenged with this question at a recent Rotary zone meeting. My first reaction was a bit glib...of course I would. But the more I thought about it, the more I had to admit that it was a difficult question to answer. Yes, I know that my Marshall County club does great work in the community, especially for our youth. And I know that Rotary International is a great steward of the funds we send to them (both in dues and in foundation giving). And I know that Service-Before-Self is the right way to conduct my personal affairs. But here's the oddity. [\(more here\)](#)

Dec 10 Meeting Recap: Guest Speaker Jim Higdon

Members clearly enjoyed the eggnog and Christmas cookies as they entered Grand Ballroom C before the December 10 meeting began. Credit goes to Pres. Greg for the idea to provide the extra goodies, and several members suggested that Greg's pay be doubled or tripled. John Anderson provided the invocation, followed by the Pledge and Rotary 4-Way Test led by Past President Lelan Woodmansee. But,



before he began, Lelan challenged us with a riddle: *"What is black when you buy it, red when you use it, and white when you're finished with it?"* The answer? *"Charcoal!"* To commemorate Frank



Sinatra's birthday, our special guest soloist Doug Helm sang *You Make Me Feel So Young*, accompanied on the piano by Charlie Castner. Doug also brought CDs to sell for \$10. Doug is donating half of the sales to the Rotary Fund of Louisville and half to Junior Achievement of Kentuckiana, Debra Hoffer's organization. After several announcements were made and prizes awarded, the guest speaker's presentation about marijuana was a very interesting one. ([more here](#))

Member Perks

Rotary Club of Louisville Logo Shirts

Custom polo shirts with the Rotary Club of Louisville logo are available in royal blue or white in men's and women's sizes (S,M,L,XL) for only \$25. These shirts are available in both colors and sizes at every Thursday Rotary meeting to help you decide which size and color to order. Questions? Email rotary@rotary45.org.