

# The Spoke

## Rotary Club of Danbury

[www.danburyrotary.org](http://www.danburyrotary.org) ,

District 7980

July 31, 2019

P.O. Box 788, Danbury, CT 06813

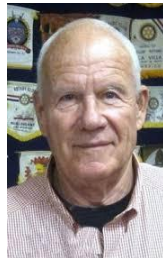
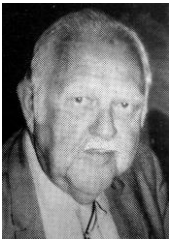
### From the Editor's Desk:

Having lived in Redding for more than 30 years, I had never visited New Pond Farm although it just celebrated its 30 year anniversary—and I live only 8 minutes away. Of course, in the beginning it started out as a refurbished turkey coop, and now provides numerous programs for the community. It was the dream of Actress Carmen Sylva Mathews who wanted to provide an ecological experience for inner city youth. Some of the programs are: Caroling in the Barn; Pancake and maple syrup breakfast; Easter egg hunt; Adopt a hive; Summer and Winter Shakespeare; Astronomy; Art show; Golf outing; Redding Road Race, run with the cows; Harvest festival; Woodland mushroom walk, and of course the summer camp for inner city kids, just to name a few activities. You can buy their “slow pasturized” milk products, and eggs, too. It is a magical place for kids.

Yours in Rotary Service, Ralph

### Tary's Rotary Minute:

During one of our meetings, in 1983, **Ted Baruch** was our Rotary speaker. Sixteen years earlier, in 1967, he had started our Rotary Trust with its first donation. As speaker, he pointed out that some of the Trust's objectives are to promote tax exempt donations, reduce internal politicking among Rotarians and to insure yearly income. The Trust is limited to scholarships, charitable gifts, and scientific purposes. The Trust Committee has always been the past 5 presidents of the Rotary Club of Danbury. Your reverse birthday gift helps to sustain the trust, so don't forget your contribution when your birthday rolls around.



Yours in Rotary Service, Tary

### Make-ups-

Mon. 12:15 pm,	Norwalk, Norwalk Inn
Mon. 6:15 pm,	Newtown, Newtown Country Club
Tues. 12:00 pm,	Wpt, Branson Hall at Christ and Holy Trinity Church
Wed. 12:15 pm,	Danbury, Ethan Allen Inn, Danbury
Wed 6:15 pm	Ridgefield Dinner Club, Bernard's, 20 West Lane, Ridgefield
Fri 7:30 am	Westport Sunrise, The Westport Inn
Fri. 12:15 pm,	Wilton, Marly's Bistro

### Luncheon Events:

**8/7** Kathlene Gerrity, Ex. Dir., CT Burns Care Foundation.  
**8/14** Amber Alert, Our part, Bob Vetter.  
**8/21** Larry Gardner, PDG on his year as the DG.  
**10/16** DG Jack Solomon, Rotarian Heroes and Interact.

### Off Site Visit to New Pond Farm—A Magical Place for Kids:



*The Executive Director, Ann Taylor, gave our ADG, Chris Hoeffel, a warm handshake and welcome to the Farm.*

*Thatcher Taylor and Gwen Denny served as our tour guides.*



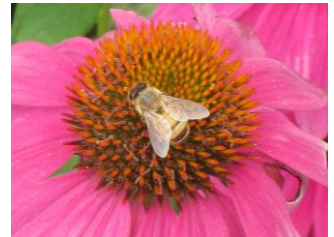
*Our esteemed DG, Jack Solomon, attended the luncheon. He will be working with me this fall to bring out a District Beacon in the spring. It was a pleasure to see him at this event.*







Food was served in a museum-like venue



**Amber Alerts:**

10/5 9 am-1 pm Home Depot, Danbury

**Ann Taylor of New Pond Farm** would like you to spread the word about their 16<sup>th</sup> Annual Golf Classic fundraiser held at the Redding Country Club, Sept. 17<sup>th</sup>.

**Rotary Club of Danbury 2019-2020**

**President-** Allison Fulton

**Officers:-**  
 Pres. Elect Delia Espinal  
 Secretary- Dr. Mark Havira  
 Treasurer- Frank Scahill, Jr  
 Sergeant at Arms- Edward Walsh

**Directors-**  
 Anita Ragona Delia Espinal  
 Robert J. Vetter Jeffery Kass  
 Dr. Mark Havira Tim Seibert  
 Tary Tarlton Frank Scahill  
 Allison Fulton Dr. Ralph S. Welsh  
 Dr. Fred Kayal

*No Spoke issues missed since 1/4/06*  
 Spoke Editor: Ralph S. Welsh  
 203-938-2820 / rswelsh@mail.com

