

---

# Welcome to Rotary Club of the Reedy River Greenville

---

Year 2021-2022  
Rotary Club of the Reedy River  
Greenville



## Member Handbook

---

## Member Handbook - Table of Contents




• Introduction	3-6
• About Rotary	7
• Responsibilities of Club Membership	10
• Financial Obligations, Attendance, Participation & Duck Derby	11-13
• Avenues of Service	14
• Service Committees	15
• Club Service	16-17
• Vocational Service	17
• Community Service	18-19
• International Service	19
• Youth Service (RYE-Rotary Youth Exchange)	20
• Membership	21
• Foundation (Polio Plus, Wheelchair, EREY, Bill & Linda Gates Foundation).	22-23
• Paul Harris	25
• Public Relations	27
• Membership Process	28-30
• Red Badge Program (Form on page 46)	31
• Events Calendar	32
• Appendix & Notes	33
• Frequently Asked Questions	34-36
• Glossary of Terms / Acronyms	37-45
• Club Leadership	47
• Club Charter	48

---

## Introduction

Rotary is a global network of 1.2 million neighbors, friends, leaders, and problem solvers who see a world where people unite and take action to create lasting change – across the globe, in our communities, and in ourselves.

Solving real problems takes real commitment and vision. For more than 110 years, Rotary's people of action have used their passion, energy, and intelligence to take action on sustainable projects. From literacy and peace to water and health, we are always working to better our world, and we stay committed to the end.

		
<b>WE ARE COMMUNITY-BUILDERS</b>	<b>WE ARE PEOPLE OF ACTION</b>	<b>WE ARE PROBLEM-SOLVERS</b>
We collaborate with community leaders who want to get to work on projects that have a real, lasting impact on people's lives.	We connect passionate people with diverse perspectives to exchange ideas, forge lifelong friendships, and, above all, take action to change the world.	Together, we apply our professional experience and personal commitment to tackle our communities' most persistent problems, finding new, effective ways to enhance health, stability, and prosperity across the globe.

## Our mission

We provide service to others, promote integrity, and advance world understanding, goodwill, and peace through our fellowship of business, professional, and community leaders.

---

## What we do

Rotary members believe that we have a shared responsibility to take action on our world's most persistent issues. These are also referred to as Rotary's 7 areas of Focus. Our 35,000+ clubs work together to:

- Promote peace
- Fight disease
- Provide clean water, sanitation, and hygiene
- Save mothers and children
- Support education
- Grow local economies
- Supporting the Environment

## We work differently

We see differently: Our multidisciplinary perspective helps us see challenges in unique ways.

We think differently: We apply leadership and expertise to social issues — and find unique solutions.

We act responsibly: Our passion and perseverance create lasting change.

We make a difference at home and around the world: Our members can be found in your community and across the globe.

## Diversity, Equity, and Inclusion

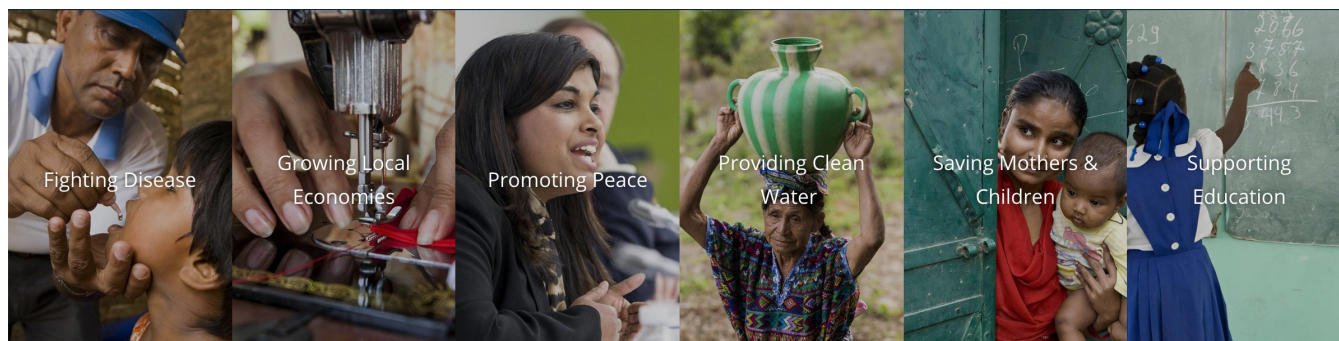
As a global network that strives to build a world where people unite and take action to create lasting change, Rotary values diversity and celebrates the contributions of people of all backgrounds, regardless of their age, ethnicity, race,



---

color, abilities, religion, socioeconomic status, culture, sex, sexual orientation, and gender identity.

## Explore Our Causes



As signified by the Rotary Motto, “Service Above Self”, Rotary’s main objective is Service.....in the Community, in the Workplace, and throughout the World.

As a new member, you’ll get opportunities to become more involved in Greenville and to provide aid to other parts of the world through opportunities our club and Rotary International offers!

Longtime Rotarians agree that involvement is key to getting the most out of your membership. Volunteer to serve on a committee that meets your interests, be a Greeter for club meetings, or join a service project team. These activities will help you get to know fellow club members and better understand the work of Rotary.

The Rotary Club of the Reedy River Greenville enjoys a membership that is active, shares a compelling sense of duty to the community, and promotes a high level of camaraderie. We nurture this character of our club and each Rotarian expects nothing less of themselves and fellow members than robust participation in our events, fundraisers and, service projects, leading to a goal of 100% overall participation.

It is the intent of our club that new members feel welcome, become familiar with our club, and feel a sense of partnership with the rest of the membership.

---

Because we have much to accomplish each year, we rely heavily upon one another to meet and exceed our goals.

Please use this Handbook as it is intended....that is, as an opportunity to interact with your fellow Rotarians. learn about our club, and as a reference guide. Feel free to ask other club members to help clarify information and complete tasks in the new member worksheet. Reach out to other Reedy River Rotarians and discover how easy it is to get to know your new teammates. In turn, they will get to know you!

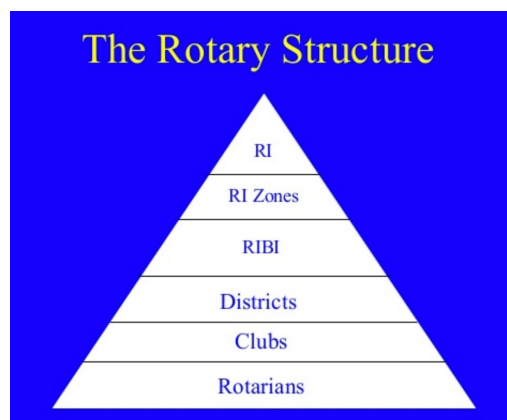
Welcome to the Rotary Club of the Reedy River Greenville! We hope that you will find membership in our Club as fulfilling and satisfying an experience as your fellow Reedy River Rotarians!

## **NOTES:**

---

## About Rotary

Rotary is made up of three parts: our Clubs, Rotary International, and The Rotary Foundation. Together, we work to make lasting change in our communities and around the world.



**Rotary Clubs** unite dedicated people to exchange ideas, build relationships, and take action.

**Rotary International** supports Rotary clubs worldwide by coordinating global programs and initiatives.

**The Rotary Foundation** helps fund our humanitarian activities, from local service projects to global initiatives. (See more on Pages 22 & 23)

**Clubs** Rotarians are members of Rotary Clubs, which belong to the global association Rotary International (RI). Each club elects their own officers and enjoys considerable autonomy (being self-governing) within the framework of Rotary's constitution and by-laws.)

**Districts** Clubs are grouped into Districts. There are roughly 535 Districts in the Rotary world, which are then organized into Zones. The Zones usually have around 18 Districts and there are 34 Zones.

**Rotary International** is administered by the Secretariat (a permanent administrative office), which is comprised of the general secretary and nearly 800 employees who work to support clubs and districts around the world. Rotary's world headquarters is in Evanston, Illinois, USA, in a building called One Rotary Center.

Throughout Rotary's history, several basic principles have been developed to guide Rotarians in achieving the Ideal of Service and High Ethical Standards. *By the way, RIBI stands for Rotary International in Great Britain & Ireland. The origins of the administrative body Rotary International and Great Britain and Ireland effectively began in 1914. What is RIBI? (See Glossary)*

---

**Object of Rotary** First formulated in 1910 and adapted through the years as Rotary's mission expanded. The Object of Rotary provides a succinct definition of the organization's purpose as well as club members responsibilities.

The **Object of Rotary** is to encourage and foster the Ideal of Service as basis of worthy enterprise and, in particular, to encourage and foster:

- **FIRST.** The development of acquaintance as an opportunity for service;
- **SECOND.** High ethical standards in business and professions; the recognition of the worthiness of all useful occupations; and the dignifying of each Rotarian's occupation as an opportunity to serve society;
- **THIRD.** The application of the ideal of service in each Rotarian's personal, business, and community life;
- **FOURTH.** The advancement of international understanding, goodwill, and peace through a world fellowship of business and professional persons united in the ideal of service.

### The **Rotary Classification Principle**

Virtually all membership in **Rotary** is based upon a "**classification.**" Basically a classification describes the distinct and recognized business or professional service that the Rotarian renders to society. The **classification principle** is a necessary concept in assuring that each **Rotary** club represents a cross section of the business and professional service of the community.

By assigning each member a classification based on his or her business or profession, this system ensures that the club's membership reflects the business and professional composition of its community. The goal is professional diversity, which enlivens the club's social atmosphere and provides a rich resource of occupational expertise to carry out service projects and provide club leadership.



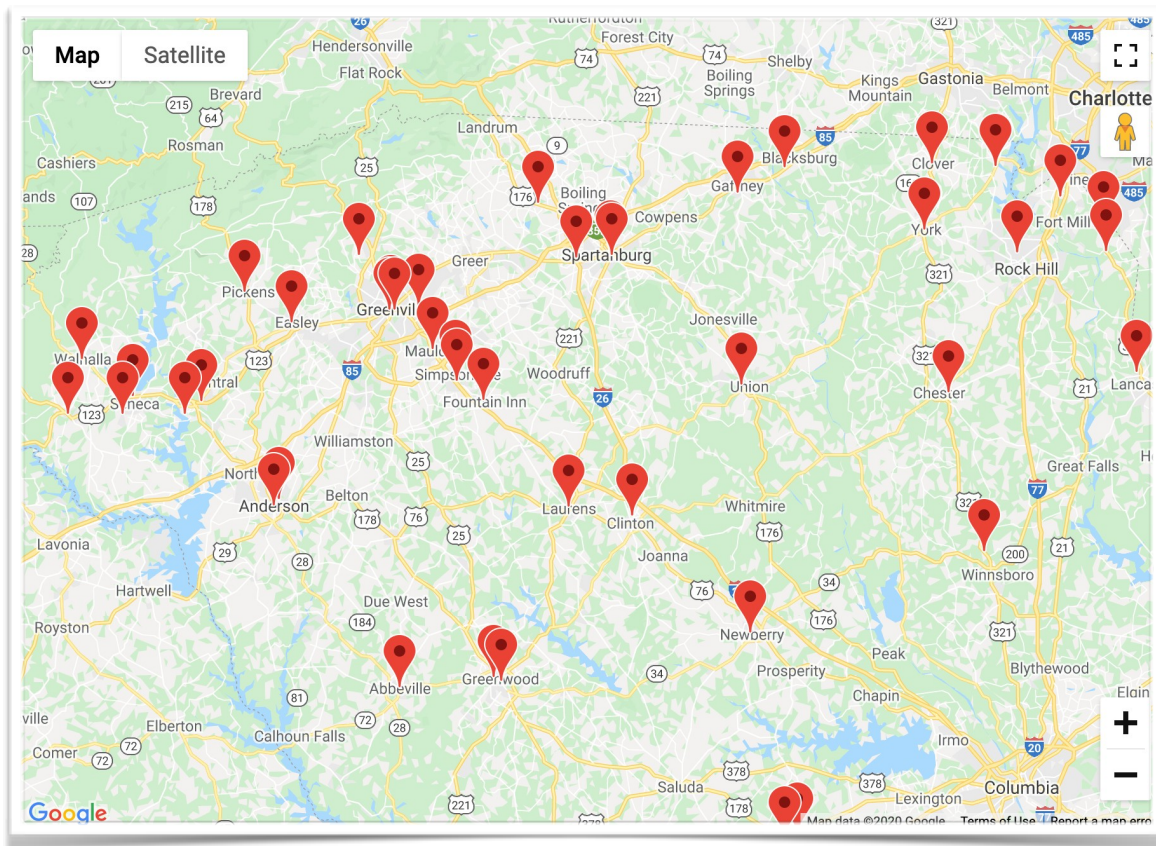
---

## Organization

Rotary is organized at club, district and international levels to carry out its program of service. Rotarians are members of their clubs, and the clubs are members of the global association known as Rotary International. Each club elects its own officers and board of directors and enjoys considerable autonomy within the framework of its constitution and the by-laws of Rotary International.

Clubs are grouped into Districts, each led by a District Governor (a very important and highly respected Rotarian) who is an officer of Rotary International and represents the RI Board of Directors in the field. Though selected by the clubs of the District, a Governor is ratified by vote of all of the clubs worldwide at the annual convention.

The **Rotary Club of The Reedy River Greenville**, chartered on February 11, 2003, belongs to District 7750 that serves Western South Carolina. There are 51 Clubs in our **District** and approximately 2700 Rotarians. Our **District** consists of the 19 western counties plus a portion of Lexington County.



Rotary International has 1.2 million Rotarians.

35,000 + Clubs

In District 7750 with 2,700 Rotarians, in 51 Clubs

**We are The Rotary Club of The Reedy River Greenville**

---

## Responsibilities of Club Membership

The club is the cornerstone of Rotary, where the most meaningful work is carried out. All effective Rotary Clubs are responsible for four key elements: sustaining and increasing their membership base; participating in service projects that benefit their own community and those in other countries; supporting The Rotary Foundation financially and through program participation; and developing leaders capable of serving Rotary beyond the club level. What Rotarians get out of Rotary depends largely on what they put into it. Many membership requirements are designed to help members more fully participate in and enjoy their Rotary experience.

## Attendance

Attending regular bi-weekly club meetings allows members to enjoy their club's fellowship, enrich their professional and personal knowledge, and meet other business leaders in their community. Many larger communities, like Greenville, offer several clubs with different meeting times, including early morning, the lunch hour, after work and the evening.

If members miss their own club's meeting, they are encouraged to expand their Rotary horizons by attending make-up meetings at any Rotary Club in the world....A practice that guarantees Rotarians a warm welcome in communities around the globe.

C. Club make-ups are also encouraged. Visit 'e-Club of the Carolinas' who meet online bi-monthly on Tuesdays at 6:00 PM

Visit: [RotaryEClubofTheCarolinas.com](http://RotaryEClubofTheCarolinas.com) for current meeting information.

### Club Finder

All Clubs

Location

Search | Use Current Location

Enter specific location or address

Example: "1560 Sherman Ave, Evanston, IL" or "Tokyo, Japan"

Distance \*

25 Miles Km

Meeting Day

Any

Meeting Time

Any

Type of Club \*

Rotary Club

SEARCH

You can also find meeting places and times through the 'Club Finder' on the Rotary International website or by downloading and using the Rotary ClubLocator APP available on your APP store.

Rotary

FIND A CLUB

KEYWORD NEAR ME

Keyword Enter Keyword Here

Country Select Country Here

State/Province Enter State Here

District Enter District ID Here

Meeting Day Meeting Day

SEARCH CLEAR

Rotary ROTARY GLOBAL REWARDS

Visit [www.rotary.org/globalrewards](http://www.rotary.org/globalrewards) now

Q i ★ ⚙

---

Reedy River Rotarians can make up meetings by participating in club service projects or attending a board meeting or a Rotaract or Interact club meeting. Members also enjoy a make-up meeting online at one of several Rotary eClubs.(See Glossary for definition of a Rotaract Club and Interact Club)

## Service

All Rotary clubs share a key mission: to serve their community and those in need,throughout the world. By participating in club service projects, members learn about their club’s involvement in local and international projects and can volunteertheir time and talents where they are most needed.

## Membership Recruitment and Retention

To keep clubs strong, every Rotarian must share the responsibility of bringing newpeople into Rotary. Members may also invite guests to participate in a service project. When people understand what your club **does** to make the world a better place, they’ll be motivated to support your efforts and get involved. Strengthening Rotary’s public image in your community will help you attractmembers, volunteers, partners, and donors.

The value of Rotary speaks for itself, and the best way to spark the interest of potential members is by letting them experience fellowship and service firsthand.Keeping members interested in Rotary is another responsibility. Great club fellowship and early involvement in service projects are two of the best ways to sustain the club’s membership. The ideal composition of a Rotary Club reflects the community’s demographics, including professions, gender, age and ethnicity.Such diversity enriches every aspect of the club’s fellowship and service.

## Financial Obligations, Attendance & Participation Requirements

**Financial Obligations:        \$ 170.        TOTAL per Quarter**  
*(The breakdown is below)*

Rotary International Dues, Club Dues & Meals	\$145. Per quarter
Rotary Foundation Contribution.	\$ 25. Per quarter
Guests/Visiting Rotarians	\$ 20. Per visit

---

***\*\*Membership Application located on Club website:  
www.ReedyRiver Rotary.org under ABOUT dropdown\*\****

## **Other Individual Financial Considerations**

The Rotary Foundation programs, Participation in Club & District Events, Happy Bucks and Attendance Requirements

Officially, all Rotary Clubs should achieve an **attendance** record of 60 percent and each Rotarian/Member is **required** to remain as an active Rotarian based on the rules set forth in the Standard Rotary Club Constitution. (Page 5 of 2019) Any missed meeting should be made up within 14 days before or after the regular meeting.

Clubs may ease attendance requirements and encourage members to participate in other ways, such as taking a leadership role, updating the club website regularly, running a meeting a few times a year, or planning an event. We appreciate your volunteerism. Our goal is to keep our club dynamic and offer a great experience for our members. The result is that attendance won't be a problem. We encourage 100% attendance

## **Participation in Service Projects / Activities**

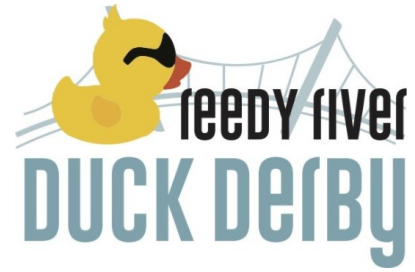
In addition to meeting financial obligations and regular attendance, each member of the Rotary Club of the Reedy River Greenville is expected to actively participate in at least one service related committee annually. There are many ways to participate in our club's events, fundraisers and community service programs.

**NOTE:** Participation in our Annual Duck Derby Fundraiser does NOT count as a service project. This annual event is the club's largest fundraiser and is an "ALL HANDS ON DECK" event with on-going active participation throughout the Rotary year expected from every member. Our Duck Derby is always held on the first Saturday in May, so mark your calendar!



---

## OUR ANNUAL DUCK DERBY



Our club holds the Reedy River Duck Derby annually as our primary community service project.

In 2020, it was the 16th annual consecutive year that our group has organized this charitable fundraiser (albeit virtually!)

The race is held on the first Saturday in May where approximately 10,000 ducks may be adopted by the community and then released into the Reedy River over Falls Park to race to the finish line. It's quite an amazing event to see!

Our Club works with the 'G.A.M.E.' company where we rent the ducks and have access to various marketing pieces. We hold a 'strip and tag' day to adhere numbers to the ducks. It is also a great time where we get to know each other better and the fellowship that comes along with getting ready for the race. In the months previous to the race we obtain sponsors. We start working on the next Duck Derby in September including looking for sponsors. Each member is encouraged to bring/find one sponsor. The Duck Derby Chair has a list of companies you can contact. In February, we start the 'adoption' of ducks through the selling of a single duck or multiple adoptions called 'QuackPacks'. As we get closer to the race day, we post flyers around the greater Greenville area and work hard to get all the ducks adopted. The Duck Derby Chair is affectionately referred to as the "Head Duck."

We work with DAT's (**D**uck **A**doption **T**eams) that are made up of local non-profits who work at selling duck adoptions with us. A percentage of the adoption sales is donated to the participating non-profit to help further their work in our community.

We disperse 100% of our Duck Derby profits/funds to local charities and Rotary International projects through grants. Grant applications are submitted

---

by April and there is a committee that organizes them, decides on the recipients and then funds the grants. Participation in all aspects of the Duck Derby is expected from each member. Besides, it's fun!

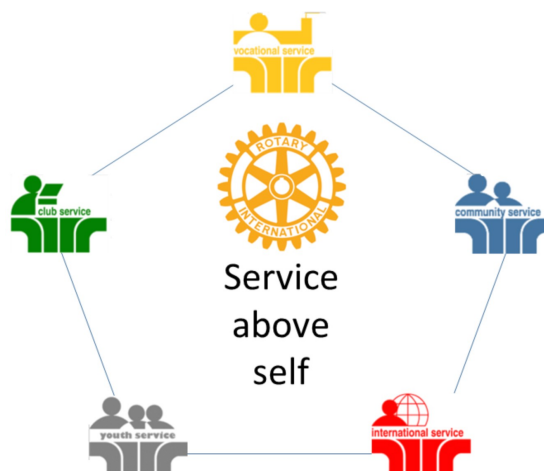
We traditionally develop community service projects to address many of today's most critical issues, especially children at risk, poverty and hunger, the environment, illiteracy and violence. Rotary Club members worldwide work to achieve the key Rotary objective of "Service Above Self."

## Avenues Of Service

**Rotary's** guiding principles include the **Four-Way Test** (Truth, Fairness, Goodwill, and Friendship). Other principles involve Rotary's commitment to **Service above Self**, which is channeled through **Five Avenues of Service**: Club, Vocational, Community, International, and Youth.

The Avenues of Service are Rotary's philosophical cornerstone and the foundation on which club activity is based. Rotary International recognizes 5 Avenues of Service:

- **Club Service** focuses on strengthening fellowship and ensuring effective functioning of the club.
- **Vocational Service** ensures that a variety of professions and occupations are honored and represented in our club membership
- **Community Service** covers projects and activities our club undertakes to improve life in the Greater Greenville area.
- **International Service** encompasses actions taken to expand Rotary's humanitarian reach around the globe and to promote world understanding and peace.
- **Youth Service** focuses on children and young adults and how Rotary interfaces with the youth of Greater Greenville area.



---

## Service Committees

In addition, we have several working committees that serve at the pleasure of the Club's Board of Directors to coordinate a number of programs:

- **Duck Derby** The chair of this committee oversees the logistics of the club's largest annual event. Referred to as the 'Head Duck.'
- **Vocational** encourages Rotarians to serve others through their vocations and to practice high ethical standards.
- **Membership** is responsible for recruiting, retaining and educating club members.
- **Public Relations** ensures that the public is kept informed as to club activities and philanthropic activities.
- **RYLA** (Rotary Youth Leadership Award) encourages activities to help identify and develop leadership skills in youth.
- **Club Administration** helps conduct activities associated with the effective operation of the club

Each Avenue of Service oversees events, fundraisers, and other functions of the club. Our club encourages all members to become active in a different 'Avenue of Service' each year, or every two years for the more complex tasks. One of us is not as strong as all of us. In the pages that follow, you will learn about each Avenue of Service and the functions they perform.

### NOTES:



**Club Service** Your role as Club Service projects chair is to help your club identify and meet real needs in your community and around the world by developing and implementing service projects.

- Plan, implement, and evaluate projects.
- Identify opportunities for signature projects that will increase your club's impact on the community.
- Work with other organizations, volunteers, and committee members to maximize the impact of your projects.
- Lead efforts to fundraise for projects.
- Understand liability issues that could affect your club's projects.
- Work with the public image committee to promote projects.
- Collaborate with other clubs on projects.
- Highlight club projects in [Rotary Showcase](#).

This committee is the backbone of the club in that they provide for our club's infrastructure. In other words, they provide service to the club. Some of the tasks they oversee are:

- |                                    |                       |
|------------------------------------|-----------------------|
| • Meeting Programs                 | • Sergeant-at-Arms    |
| • The Quacker (bi-weekly bulletin) | • Inter-Club Delegate |
| • Club Historian                   | • Club Photographer   |

In addition, Club Service coordinates the following events:

- |                                      |                     |
|--------------------------------------|---------------------|
| • District Governors Visits          | • Holiday Party     |
| • Club Shed Organizing               | • Charter Night     |
| • Interclub Events                   | • Club Awards Event |
| • Local Club BBQ                     |                     |
| • Club Auction to fund Holiday Party |                     |



- 
- President Demotion/Debunking (usually under the direction of the immediate Past President)

The Past Presidents' Committee also serves under the Club Service banner. This group is comprised of all the club's Past Presidents, current President and President Elect. They select a slate of prospective members to serve as upcoming Presidents, and also offer advice or guidance (sometimes solicited-sometimes not) to the current President.

It is important to emphasize the NO money raised within that community is used to fund events that fall under the Club Service heading. Happy Bucks and Club Auctions help augment the cost of some of the events, such as the Club Holiday Party. Many of these intra-club activities help build camaraderie or retain and celebrate our club's history or collective memory. They are an important element of our club and they're FUN!



**Vocational Service** This committee ensures that the club and community's vocations are honored and represented within the club. An illustration of an activity for this Avenue of Service include our participation in the coordination of local 'High School Career Days.'

We also try to share our vocational skills to benefit the community. For example: A member who is an architect assisted in the design and construction of a park structure or building.

Every Rotarian is invited and encouraged to share their vocation with the club. At various club meetings we invite members to give vocational presentations, during which they discuss (and we explore) their profession.

In keeping with Paul Harris' original intent, all occupations are welcome in the club and we encourage recruitment of new members to present professions which maybe under-represented in our club.

January is Rotary's vocational service month. Rotary's belief is that our vocations provide the basis of service. Essentially, whatever your vocation, you serve as Rotary's Ambassador to that vocation and to the community at large. You also

---

serve as an Ambassador of your vocation to Rotary. All Rotarians are familiar with the Four Way Test, but likely aren't as familiar with the Rotarian Code of Conduct, which says:

*As a Rotarian, I will*

- 1) Act with integrity and high ethical standards in my personal and professional life;*
- 2) Deal fairly with others and treat them and their occupations with respect;*
- 3) Use my professional skills through Rotary to mentor young people, help those with special needs, and improve people's quality of life in my community and in the world;*
- 4) Avoid behavior that reflects adversely on Rotary or other Rotarians.*

Apart from conducting our businesses and our lives according to the ideals of Rotary, there are many ways that you can participate in vocational service. You could join a Rotary Action Group or a Rotary Fellowship, both through MyRotary.org. You could participate in a vocation-related Rotary Friendship Exchange, or you could participate in a Vocational Training Team (VTT).

If you wish to become more involved in vocational service through Rotary, we suggest that you can check out [rotaryserviceblog.org](http://rotaryserviceblog.org) for ideas and information.



**Community Service** Community Service oversees a number of community-based activities, fundraisers and events. The Annual Duck Derby is the single largest fundraiser for our club, and the

community's highly anticipated social event. The Duck Derby Chair reports directly to the Club President. Although it falls under the Community Service banner, it has its own separate committee.

Planning, coordinating and hosting the Duck Derby requires the participation of each Reedy River Rotarian, and the Duck Derby Chair oversees several sub-committees, including but not limited to, Duck Adoptions, Strip and Tag, Shed workshops, posters, auto magnets, 'Shades' (our duck mascot's) local appearances, PR, vendors, sponsors, Very Important Duck (VID) events and more.

---

Proceeds from the Duck Derby funds go to selected charities and needs within our local community during the following budget year. Some of those projects and events have included:

**Projects & Events:**

Trees Upstate  
Girls On The Run  
EarlyAct First Knight  
SWITCH  
Duck Derby  
Honduras Water  
ProjectUnited Ministries

Mauldin Miracle  
LeagueCancer  
Survivors Park  
Roper Mountain Science Ctr.  
Logos Theater  
Carolina Dance  
Collaborative STRIDES  
The Carolina Youth Symphony



**International Service** This Avenue of Service is a key element in every Rotary Club. Rotary International recognizes the importance of supporting your community, while reaching out to others around the world. This Avenue of Service encourages Rotarians, and by extension, their community to think globally, to see the world as a whole, and to use their resources to achieve international

understanding, goodwill, and peace.

The Chair of this Avenue of Service oversees the creation and maintenance of international project (IP)

**IP:** The International Project will vary from club to club. Over the years we have supported international projects such as the Honduras water project.

**VTT:** A vocational training team (VTT) is a group of professionals who travel to another country either to learn more about their profession or to teach local professionals about a particular field.

Rotary's grant making model offers two types of grants, district and global, with district grants supporting smaller projects both locally and internationally, while global grants support larger, sustainable, high-impact projects that are aligned to one of the six areas of focus.



**Youth Service** This committee is a relatively newer Avenue of Service, introduced in 2010. It was formerly known as New Generations. Youth Services is aptly named, for its focus is on children and young adults, and ensuring Rotary effectively interfaces with the youth of our community locally & worldwide.



### Projects & Events supporting

**youth:** Early Act First Knight (Character Building)  
Chicora Voices  
Mauldin Miracle  
League United  
Ministries  
Roper Mountain Science  
Center Cancer Survivors Park  
Trees Upstate

Girls On The Run  
Switch (Fighting Human Trafficking) Strides  
Carolina Youth Symphony  
Rotary Polio Plus - (Ending Polio) Honduras Water Project  
Cashion Elementary Dictionaries



**Rotary Youth Exchange** Each school year the Rotary Club of the Reedy River Greenville and other local Rotary clubs work together to host an exchange student (ages 16-19) from another country. This involves setting up host homes for the student to live in during the year, as well as coordinating activities for the student outside of

school. Each Rotarian is asked to consider hosting a student for 3 months in their home, and sharing our customs and community with the student. This is considered one of the most satisfying roles a Rotarian can undertake, and can result in friendships that last a lifetime.

Rotarians who may not host a student can still participate! We ask all club members to invite our exchange student(s) on trips, in family activities, etc.

**CALL TO ACTION:** Let your leadership team know if this is something you'd like to be a part of!



**Membership** This committee oversees the recruitment, retention, and education of our club members. They oversee tasks including:

- Review of new member proposals
- New member Information Sessions
- Induction of new members
- Member handbook
- Classification determination

**Everything At Your Fingertips**

**The first two things you should do once you are a member.**



1.) Visit **‘DACDb’** (District and Club Database) This is where you will find everything related to our Club and our District. **Please LOGIN right away and add your contact information under the ‘MY DATA’ tab.**

Find Member

Club Members

AREA

Club Assignments

Club Attendance

Calendar

Club Bulletins

Club FILES

Club FILES (New)

Club Information

Club Committees

Club Engagement

Club ezBulletins

Club ezStory

Club Finance

Club Maps

PMAIL

PText

Reports

RI Compare

RLI

Club Sponsors

Club Statistics

Club Websites

Cathy Harry

Badge Name:  
Classification:  
Sponsor:  
Birthdays:  
Date of Induction:  
Prior Rotary Years:  
Years in Rotary:  
Attendance this Year:  
Years Perfect Attendance:

8 Upcountry Lane  
Travelers Rest, SC 29690  
864-775-1070  
CathleenHarry@gmail.com  
Alan  
Cornerstone Real Estate Group  
Associate Broker  
864-724-9699  
Cathy@CathyHarry.com  
www.AlanandCathyHarry.com

The Reedy River Greenville

Update My Profile

PHF - Paul Harris Fellow

Enter Makeup

My Attendance Report

Member Committees:

There are 2 committee(s).

Committee	Position
Rotary District 7750	
Club Public Image Chairs	Member
The Reedy River Greenville	
Public Relations	Chair

2.) Visit **MyRotary.org** and complete your personal ‘Profile’.

Rotary

My Rotary

Click here to complete profile

Profile

Delegation

Account Settings

Sign Out

Rotary.org

Club Finder

Exchange Ideas

Take Action

Learning & Reference


Manage

The Rotary Foundation

News & Media

Member Center

**DID YOU KNOW?** Just about everything you need to know you can find on these two websites? Training videos too! Log on and look around, you'll be impressed!

Rotary 		<a href="#">My Rotary</a>   <a href="#">Club Finder</a>		<input type="text"/>	<a href="#">JOIN</a>   <a href="#">DONATE</a>
<b>About Rotary</b>	<b>Get Involved</b>	<b>Our Causes</b>	<b>Our Programs</b>	<b>News &amp; Features</b>	<b>For Members</b>
Overview	Overview	Overview	Overview	All News & Features	My Rotary
History	Join	Ending Polio	Youth Programs	Rotarian Magazines	Club and District Administration
Our Structure	Rotary Clubs	Promoting Peace	Rotary Youth Leadership Awards	Press Center	Rotary Club Central
Our Foundation	Interact Clubs	Fighting Disease	Peace Fellowships	Blog	Rotary Citation
Our Leaders	Rotaract Clubs	Providing Clean Water	Rotary Community Corps	Social Media	Club Finder
Diversity, Equity, and Inclusion	Projects	Supporting Education	Grants	Virtual Reality	Member Center
Financials	Partnerships	Saving Mothers and Children	Youth Exchanges		RI Convention
Partners		Growing Local Economies	New Generations Service Exchange		Profile
Membership		Disaster Response	Scholarships		Our Foundation
Careers			Friendship Exchange		



**Foundation** The Rotary Foundation was formed in 1928 through Rotary International as an endowment fund “for doing good in the world in charitable, educational, and other avenues of community service.” Upon the death of Paul Harris in 1947, an outpouring of support from Rotarians around the world

resulted in the Foundation’s first program, graduate fellowships now known as Ambassadorial Scholarships. A number of programs are now funded through the Rotary Foundation.



**PolioPlus** In 1985, Rotary International launched PolioPlus. A multi-year commitment to eradicate polio. PolioPlus is one of the most ambitious humanitarian undertakings ever made by a private entity. By 1990, Rotary transitioned from providing polio vaccines to children in developing countries to assisting health care workers in the field, providing training for laboratory personnel to track the poliovirus and working with governments around the world in supporting the historic

---

once the disease has been eradicated in the remaining countries still affected:  
**Afghanistan, Pakistan, and Nigeria**



**Wheelchair Foundation** The Wheelchair Foundation has the mission of providing a wheelchair to everyone in the world who needs one but cannot afford it. For \$75.00 you can provide wheelchair mobility to someone who has been ashut-in or a crawler because they cannot walk. The Wheelchair Foundation matches the contribution of each

Rotarian who makes a donation.



The Every Rotarian Every Year (EREY) initiative asks every Rotarian to support The Rotary Foundation every year. In addition to contributing to the Annual Fund on

a regular basis, members are encouraged to get involved in a Foundation project or program. This can be accomplished online via My Rotary or just search for The Rotary Foundation and the "Give Now" box. A goal which many set for themselves is \$100 per year. It may be more or it may be less. Let's try for 100% of our club to give something.

Your gift to the Annual Fund helps Rotary clubs take action today to create positive change in communities at home and around the world. Your contributions help us strengthen peace efforts, provide clean water and sanitation, support education, grow local economies, save mothers and children, and fight disease.

At the end of every Rotary year, contributions directed to the Annual Fund-SHARE from all Rotary clubs in the district are divided between the World Fund and the District Designated Fund, or DDF. At the end of three years, your district can use the DDF to pay for Foundation, club, and district projects that your club and others in the district choose. Districts may use up to half of their DDF to fund district grants. The remaining DDF may be used for global grants or donated to PolioPlus, the Rotary Peace Centers, or another district. This amount is separate from the Polio Plus giving. A percentage of the Polio Plus

---

money does not return to our district to be used as DDF. The DDF is used for our smaller projects as opposed to minimum \$30,000 projects which are Globalgrants. Let's support our district so we can ask the district to support our projects!



Rotary, the World Health Organization, UNICEF and the Centers for Disease Control and Prevention launched the Global Polio

Eradication Initiative in 1988. In 2007, the Bill & Melinda Gates Foundation joined Rotary in its commitment to ending polio.

Since 2013, the Gates Foundation has matched every \$1 Rotary commits to polio eradication 2-to-1, up to \$35 million per year. Rotary, with matching funds from the Gates Foundation, has contributed more than \$1.6 billion to end polio.

Since we started the fight against polio, we've reduced the number of polio cases by 99.9 percent and reached more than 2.5 billion children with the vaccine. There are fewer polio cases today than ever before, but we will not stop until we reach zero. If polio is not eradicated, hundreds of thousands of children could be paralyzed. Global health care costs would rise dramatically, and many children's quality of life would be drastically diminished.

Join Rotary in the fight to end polio and help us save lives and give a child a chance at a prosperous future.



## Paul Harris

The Rotary Club of the Reedy River Greenville encourages each Rotarian to become a sustaining member of the Rotary Foundation, which supports a wide range of humanitarian grants and educational programs to foster international understanding. One way to support this foundation is to become a “Paul Harris Sustaining Member” by contributing \$100 annually to the foundation.

The name Paul Harris is one you hear frequently in Rotary. Who was Paul Harris? Why is he important to our Club?

Paul P. Harris was born on April 19, 1868, in Racine, Wisconsin. He worked as a newspaper reporter, a business teacher, stock company actor and cowboy. He also traveled extensively in the U.S.A and Europe selling granite.

In 1896 he went to Chicago to practice law. It was there he was introduced to a variety of clients and the seed was planted in his mind to create a club to band together a group of business and professional men in friendship and fellowship.

The world's first service club, The Rotary Club of Chicago, Illinois was formed on February 23, 1905 by Paul Harris. Paul Harris formed this club with three of his law clients - Silvester Schiele, a coal merchant, Gustavus Loehr, a mining engineer, and Hiram Shorey, a merchant tailor.

Paul Harris named the club “Rotary:” because the group met in rotation at their various places of work. Paul Harris was instrumental not only in forming of Rotary, but also in its growth to other cities and countries.

When Paul Harris passed away on January 27, 1947, he was President Emeritus of Rotary International. At the time, there were some 6000 Rotary Clubs worldwide, The organization now boasts over 1.2 million Rotarians (men and women) in 33,000 Clubs from 200 countries.

Many Rotary Foundations, awards, recognition programs and events are named in Paul Harris' memory. **What recognition opportunities are available with Foundation recognition points?**



---

### Paul Harris Fellow

Paul Harris Fellow recognition is extended to any individual who contributes, outright or cumulatively (or in whose name is contributed), \$1,000 or more to the Annual Fund or PolioPlus or as sponsorship of a portion of a Foundation grant. The recognition consists of a certificate and pin. In addition, [Paul Harris Fellow medallions](#) can be ordered at [shop.rotary.org](http://shop.rotary.org).



---

### Certificate of Appreciation

A Certificate of Appreciation is given to a business or organization in whose name a donor contributes \$1,000 or more.



---

### Multiple Paul Harris Fellow

Multiple Paul Harris Fellow recognition is extended at subsequent \$1,000 levels. Recognition consists of a pin with stones corresponding to the recipient's recognition amount

- \$2,000 to 2,999.99 - one sapphire
- \$3,000 to 3,999.99 - two sapphires
- \$4,000 to 4,999.99 - three sapphires
- \$5,000 to 5,999.99 - four sapphires
- \$6,000 to 6,999.99 - five sapphires
- \$7,000 to 7,999.99 - one ruby
- \$8,000 to 8,999.99 - two rubies
- \$9,000 to 9,999.99 - three rubies



---

## Public Relations



Public relations efforts are vital to Rotary's continued growth and service in our community. Creating a positive image for our Rotary club is the responsibility of every Rotarian, both locally and globally.

Effective public relations builds positive, strong relationships with our community, by promoting Rotary's work in the best possible way. Further, it can enhance membership and retention, increase fundraising and community support and promote public trust.

Sharing our stories effectively with the public and the media, however, are not easy tasks.

***"In the promotion of understanding, it is important to reach large numbers, non-Rotarians as well as Rotarians, and you cannot reach large numbers privately." ~ Paul Harris***

It is the responsibility of the Public Relations Committee to achieve club public relations goals for the year. This includes:

- Creating awareness of club activities among club members, media and the general public;
- Enhancing projects and activities to make them more appealing to the media;



- Helping to create a public image conducive to membership development.

In short, the objective of the Public Relations Committee is to create a greater public understanding of what Rotary is and what Rotary does.



---

## **The Membership Process**

To be effective, the Rotary Club of the Reedy River Greenville needs members with the ability to serve the community, support the Rotary Foundation and develop leadership skills necessary to serve Rotary beyond the club level.

Before being proposed as a member, a prospect should have resided or worked in the community for at least 6 months, have been philanthropically active and should have attended two club meetings as a guest to insure that the proposed member has experienced the dynamic of our club.

To propose a member you are required to submit to the Membership Committee an application form from the club's website at [www.ReedyRiverRotary.org](http://www.ReedyRiverRotary.org). Click on the 'About Our Club' link on the left and access the [Membership Application](#) through the drop-down menu. Three letters of recommendation from current club members should accompany the application along with a biography page. (Note: Newer members should not propose a new member until they have been a member in good standing for at least six months.)

The application is then sent to the membership committee for classification. This classification process is one of the key differences between Rotary and other service clubs. Each Rotary club maintains a list of classifications and the approved classification will be imprinted on the new member's Blue Badge and published in the club roster.

After a review of the prospective member's reputation, the application is forwarded to our club's Board of Directors. Our Board of Directors may or may not approve the application for submission to the club members as a whole for final approval.

If the application for membership is approved by the Board of Directors, the prospect's name, biography, classification and sponsor's name are then distributed to the entire membership. If there are any objections, they must be registered with the Club Secretary in writing within 7 days of the date of publication. If there are no objections, the proposed member will be deemed approved for membership and an induction ceremony will be arranged by the new member's sponsor after the new member has attended a 'Discover Rotary' meeting.

---

## **Duties of a Sponsoring Member**

As a sponsor, your duties reach beyond induction. You or your proxy will serve as a mentor to assist your new member to become engaged in our club through the Red Badge Program. If there are problems with attendance, dues, or other matters, we will come to you as the sponsor and ask you to counsel your new member.

## **Regular Membership Meetings**

Regular membership meetings are held on the second and fourth Tuesday at 6:00 pm to 7:00 pm. We meet at the Hilton Greenville located at 45 W Orchard Park Dr, Greenville, SC 29615. Members generally start showing up at 5:30 to enjoy a little fellowship before the meeting. We stand and recite the Pledge of Allegiance followed by an invocation. It is not unusual for the President to call upon a member to lead the Pledge or share an invocation. You would be asked prior to the meeting so you have time to prepare.

## **C.A.R.T. Fund & it's History**

You will notice blue plastic buckets on the tables at our meetings. We use these buckets to encourage members to empty their pockets or purses of spare change. We use the proceeds to donate to **C**oins for **A**lzheimer's **R**esearch **T**rust.

In October 1995, the Sumter, S. C. Rotary Club, led by Roger Ackerman and Dr. Jack Bevan, initiated the effort to prove that Rotarians voluntarily emptying their pockets of change for a good cause could produce significant levels of funds to support Alzheimer's disease research. The CART Fund (Coins for Alzheimer's Research Trust) was the name given to the project, which proved to be highly successful during an 8-month testing period. In May 1996, The CART Fund was introduced at the Rotary District 7770 Conference and was enthusiastically received. The District leaders agreed to adopt CART as a project, if a committee made up of Sumter Rotarians could obtain the support of the individual clubs in the District. During the 1996-97 Rotary year, CART programs were presented in 62 of the 68 clubs in D-7770. The response was overwhelmingly in support of this grassroots project and the district officially adopted CART as a district-wide program in 1997. Please visit [www.CARTFUND.org](http://www.CARTFUND.org) for more information.

---

## Happy Bucks

Happy Dollars is a Rotary Institution that adds a lot of fun to Rotary meetings. In this particular ritual, Rotarians offer a dollar to celebrate whatever has happened in their personal and professional lives that makes them....well.....happy! It is a great way for everyone in the club to be kept up to date on the latest and greatest going on with their members, and it's a great way to raise money for charity. Clubs typically set aside Happy Dollar proceeds for a specific goal or community chest and the dollars can add up in a hurry.

During this time, Rotarians can donate a dollar (or multiple dollars) and tell the club what they are happy about. It works as a positive reinforcement for members to want to share positive events in their life, while giving back to either the club treasury, the Rotary Foundation, or a club designated charity.

## Who are Shades and Quacky and what is DATs?



The club has a mascot who promotes our Annual Duck Derby by making appearances throughout the year.



**Shades** is a 'live' mascot and has often been seen with his other mascot friends that support sports teams and such in our local area. **Quacky** is a little more rigid and can also be seen promoting our Duck Derby at various locations as well.

And what is DATs? DAT stands for **D**uck **A**doption **T**eam. These are teams from various groups in our community who partner with us to promote our Annual Duck Derby. They promote and sell tickets to our Duck Derby and in return we share some of the sales raised through the Duck Derby tickets they sell to support their causes and everybody wins, especially our community!



---

## **The Red Badge Program**

As a new member of the Rotary Club of Reedy River Greenville, you will receive a temporary red name badge. (defined as 'new to Rotary') You will wear your red badge during the first 6 months of membership or until you have completed the requirements listed below. The process of exchanging your red name badge for a permanent blue badge is a first step to getting involved quickly in Rotary and learning more about your Reedy River Rotary Club.

Once you have completed your new member activities (again, due within 6 months of joining), turn your Red Badge document (see appendix) to the Membership Committee Chair. The Club Secretary will order a blue badge for you.

You will then be recognized officially during a club meeting in a name badge exchange ceremony. Exchanging your red badge for the permanent Blue Badge.

Your sponsor will be your mentor during the Red Badge Program. Your sponsor will assist you where needed and will sign off wherever you have completed a required activity.

### **Required New Member Activities**

- **Attend 1 Board Meeting**
- **Attend 1 weekly meeting of another Club within District 7750**
- **Serve as attendance taker for meetings**
- **Attend at least 75% of Club Meetings during the first 3 months**
- **Give a 5-Minute Classification/Vocation Talk**
- **On the Internet, visit the District 7750 and Club website**
- **Join a committee and attend at least 1 meeting**
- **Attend a District 7750 Event**
- **Watch a Rotary Video**
- **Pay your quarterly dues and Paul Harris obligation**

---

# Events Calendar

(dates given are approximate - events subject to change and are held at the discretion of the Club President)

## **July**

- District Governor Visit
- Youth Exchange (incoming/outgoing)
- Past Pres. Demotion
- Blood Drive

## **August**

- Other
- Blood Drive

## **September**

- Interclub Event
- Other

## **October**

- Other

## **November**

- Blood Drive
- Past Pres. Meeting
- Seniors Thanksgiving Luncheon
- Club Auction

## **December**

- Holiday Party
- Community Christmas
- Ornament Exchange

## **January**

- Election of Pres. Elect
- Outgoing RY Applications

## **February**

- Club Charter Night
- PETS

## **March**

- Blood Drive
- Speech Contest
- District Assembly

## **April**

- Ofc. Assistant's Day
- RYLA Camp

## **May**

- Duck Derby
- Interclub Event?
- District Conference

## **June**

- Service Above Self Awards (timing varies)
- Club Awards Night
- International Convention
- President's Demotion

---

## **Appendix**

- Frequently Asked Questions
- Glossary of Terms and Acronyms
- Red Badge to Blue Badge Qualification Form

### **NOTES:**

---

## **Frequently Asked Questions**

### **How do I get my Blue Badge?**

Once you complete the requirements on page 31, your blue badge will be ordered for you and presented at a club meeting.

### **How are my dues used?**

Dues cover the operating costs for Rotary International and help fund club activities. Club meeting fees offset the cost of facilities for our meetings and meal fees pay for the food/catering.

### **Why do I need to sign in at the meeting?**

Attendance at Club Meetings is very important to Rotary International (RI) and our club. More importantly, the business of the Club relies on every member attending as many meetings as possible. We do keep an attendance record of every meeting.

### **How do I get involved in Club activities?**

Using this handbook or the Club website and determine which of the Club's activities you'd most like to participate in. Then approach the appropriate committee chair(s) and let them know you'd like to help! It won't be long until you're being invited by others to help in ways you may not see today.

### **What are Happy Bucks, and what are they used for?**

Happy Bucks are a fun way to acknowledge members' birthdays, anniversaries, vacations, or any other noteworthy action or event in each Rotarian's life. The Club President asks for Happy Bucks at most every meeting. The money collected goes towards Community Service. A member can discuss any Happy Bucks donation or accumulation of amounts with the President privately if they are limited financially.

### **May I share a business opportunity with Club members?**

Rotary is really not a forum for conducting your business. It is a service club. Rotary emphasizes integrity and high ethical standards. As part of Rotary's guiding principles and the Avenues of Service, Rotarians empower others by using their unique skills and expertise to address community needs and help others discover new professional opportunities and interests.

---

### **How do I propose someone else for membership?**

New members must be in good standing for at least 6 months prior to nominating new members themselves. We take very seriously the process of nominating new members and encourage you to check with the Membership Chair before you take any action. [Membership Application](#) (on line link)

### **What should I do if I expect to miss meetings over several months?**

Our Club does have a policy for leaves of absence. Check with the Membership Chair for details. Making up a meeting can happen online or by attending clubs in other locales worldwide. Attendance at such meeting are very convenient and encouraged as a way to meet other Rotarians and create new friendships.

### **Who should I inform if my personal information (such as address) changes?**

Inform the Club Secretary of any changes to your mailing address, phone number or spousal information, etc. so they are aware of the changes. Please also log into DaCdb (District and Club database) at [www.DaCdb.com](http://www.DaCdb.com) to update your information.

### **How do I give to any of the five Rotary Foundations listed on pages 22-24.**

Contact the appropriate chair for details. You may also log into <https://my.rotary.org/en/donate> to donate to these funds and learn about where the funds will help: Polio Fund, Annual Fund, World Fund and Disaster Response Fund.

### **May I bring a guest to a Club Meeting?**

Generally, yes! Usually when we have a Club Assembly we suggest that no guests attend because Club business is discussed and often there is not a guest speaker. Otherwise, you may bring a guest. You are expected to pay for your guest's meal. Approximately \$20.

### **Do I need to wear my Rotary pin at every meeting or other places?**

Yes! In fact, you should wear your Rotary pin proudly every day! You may be asked to donate to our Happy Dollar fund if you forget to wear your pin to a club meeting as a fun way to remind you to wear your Rotary recognition pin.



---

## **What happens at regular Club meetings?**

Each meeting includes dinner, some Club business, announcements, and Happy Dollars as well as a presenter or guest speaker. Everyone is encouraged to relax and have fun, while being respectful to whomever has the floor.

## **How do I make an announcement at a Club meeting?**

It's best to ask the President before the meeting is called to order; however, if you don't do that you may still raise your hand when the President calls for any announcements. Announcements should be of general interest to the Club and not promote your business or encourage or discourage any political points of view.

## **How do I introduce a visitor to our club?**

One of the best ways to show appreciation for a visitor who is attending our meeting is to properly introduce them. A visitor should never be expected to stand up and introduce themselves.

Here are a couple of introduction examples: **Visiting Rotarians from another club or a Rotary dignitary.** (ie: DG, ADG, Past President, etc.) "President (First name), fellow Rotarians and guests, from the Rotary Club of (name of club) with the classification of (classification) it is my pleasure to introduce and welcome (first name, last name)."

**A guest:** "President (First name), fellow Rotarians and guests, with (the name of the business) as a (vocation or title) it is my pleasure to introduce and welcome (first name, last name)."

## **What is a Paul Harris Fellow and how do I become one?**

Donors of \$1,000. or more to the Rotary Foundation can become a Paul Harris Fellow. These funds help sustain a variety of international programs and services. Our Club can also honor Rotarians each year by donating an amount in a members name. These donations can be spread over a period of years until they accumulate to the required \$1,000. Also, when a member accumulates \$1,000, that member can decide to bestow a Paul Harris Fellow on him/herself, or on any person (Rotarian or not) the Rotarian deems worthy of recognition for service.

**Where can I find other Rotary Resources?** There is an abundance of information (including Learning Videos) that can be found at the [Learning &Reference Center](#) at MyRotary.org

# Glossary of Rotary Terms and Acronyms

ACRONYM	DESCRIPTION
ADG	Assistant District Governor
AG	Assistant Governor – One of a number of senior Rotarians appointed by the District Governor (DG) to assist with administration of a group of clubs in that year.
ALUMNI	District and Club Group – Association of former members of Group Study Exchange teams (GSE), Scholars and other Foundation programs.
AMBASSADORIAL SCHOLARS	An international program of Rotary Foundation – Enables people to spend an academic year abroad in university level or vocational studies.
CARL P. MILLER INDIVIDUAL GRANT	Rotary International Foundation grant up to \$3,000 for travel, research on an international service project – To be used by a Rotarian or Rotarians who have a written invitation from a club in a host country who will offer home-hosting.
CHARTER MEMBER	The original members of a chartered club – identified with a special lapel badge.
CLASSIFICATION	A principal concept to ensure each Rotary club represents a cross-section of business/professions. Describes the distinct and recognized business or professional service which the Rotarian renders to community (Not position held)

<b>CLUB &amp; DISTRICT CHANGEOVERS</b>	An event held annually just prior to anew Rotary year. It is the formal changeover to new President and Incoming Officers and Directors. This event provides a review of pastyear’s achievements and activities.
<b>CLUB BANNER</b>	A small flag expressive of the community, country or region of a club. Commonly used to present tovisitors and exchange with clubs throughout the world. Sometimes referred to as a trading banner.
<b>CLUB CHARTER</b>	A document issued when a new clubis admitted to membership in RI. Signed by RI President, General Secretary and District Governor. The date thereon represents date ofofficial membership.
<b>CLUB COMMITTEES</b>	The “action” groups within a club. These comprise standing committees under the Five Avenuesof Service plus others approved by the Board. Each headed by a chair.
<b>CLUB FORUM / CLUB ASSEMBLY</b>	Formal meeting of an entire club.Called to inform members about service activities and progress ofprojects. Also an opportunity for members to air views and ideas.
<b>CLUB TASK ALLOCATION</b>	List of essential tasks allocated to members. Enables spread of administrative and essential tasks toensure effective outcomes.
<b>COUNCIL OF GOVERNORS</b>	A District committee. Past DG’s whoconvene to give advice to the current DG on programs, policies and procedures.
<b>DDF</b>	District Designated Funds.

<b>DG</b>	District Governor. Directly responsible to the Board of Rotary International (RI) for the supervision of clubs within a designated district.
<b>DIK</b>	Donations-In-Kind. Typically supplies of donated educational and medical equipment made available to serve a need in the developing world.
<b>DISTRICT CONFERENCE</b>	Annual event for members and partners. Held annually in each District to further the programs of Rotary through fellowship, inspiring speakers and recognition of club activities.
<b>DLT</b>	District Leadership Team. An enhanced organizational structure in a District to enable cost-effective growth and faster, more responsive support to clubs by appointment of Assistant Governors.
<b>FIVE AVENUES OF SERVICE</b>	The major elements of the “Object of Rotary.” Term used to refer to Club Service; Vocational Service; Community Service, International Service and Youth Service.
<b>DRFC</b>	District Rotary Foundation Committee
<b>FELLOWSHIP</b>	Major club function. Promotes acquaintance among members through participation in club’s recreational and social activities.
<b>FOUNDER OF ROTARY</b>	Refers to Paul P. Harris who Organized the first Rotary Club in Chicago on Feb. 23, 1905

<b>FUNCTIONAL LITERACY PROGRAM</b>	An RI program since 1992 – To meet the needs of adults deemed to be functionally illiterate and to give support for reading, writing skills through community Literacy centers.
<b>GETS</b>	Governor-Elect Training Seminars
<b>GNG</b>	Global Networking Groups
<b>HELPING GRANTS</b>	Up to \$15,000 based on a 2:1 match of club or district contributions. For projects in a country other than that of the sponsor where Rotary participation is not possible.
<b>HONORARY MEMBER</b>	Recognition of a past member or non-Rotarian. Persons who have distinguished themselves by meritorious service in the furtherance of Rotary ideals.
<b>HORIZONS</b>	A District or club Committee. To research and propose a forward planning approach within District or Club to improve organizational structures and consider suggestions which will attract younger prospective members.
<b>IFYR</b>	International Fellowship of Yachting Rotarians
<b>INNER WHEEL</b>	An international organization of women. A Rotary sponsored service group open to wives and widows of present and past Rotarians.
<b>INTERACT</b>	Interaction between youth and service. A world-wide Rotary Sponsored group of young people dedicated to service and international understanding.



<b>INTERNATIONAL ASSEMBLY</b>	An annual assembly of District Governor Nominees. To educate, instruct and inspire DGNs and allow adoption of annual RI theme and new programs of RI.
<b>INTERNATIONAL CONVENTION</b>	World-wide gathering of all Rotarians and partners. Held usually in May in a different country chaired by RI President.
<b>INTERPLAST</b>	International Plastic Surgery Program. Established in 1980, send teams of volunteer surgeons and nurses to developing countries to operate on deformities, burns, etc.
<b>IPAC</b>	International Projects Advisory Committee. A national committee to update registry of international projects identified as suitable for support of clubs.
<b>IPDG</b>	Immediate Past District Governor
<b>IPEC</b>	International Polio Eradication Committee
<b>IPP</b>	Immediate Past President
<b>IPPC</b>	International PolioPlus Committee
<b>LEAVE OF ABSENCE</b>	Upon written request to the Club Board. May be granted to excuse member from meetings for a specific length of time but does not operate to give credit or attendance.
<b>LTYE</b>	Long Term Youth Exchange
<b>MAKE-UPS</b>	Making up attendance via another Rotary Club or District meeting. A card or receipt is obtained from the visited club to show credit for attendance. Rotarians should try to make-up within 2 weeks of their normal meeting.

<b>MATCHING GRANTS</b>	Up to \$50,000 that matches club contributions. For projects involving Clubs in 2 or more countries for humanitarian service.
<b>OBJECT OF ROTARY</b>	A statement from the Rotary Constitution. The object is to encourage and foster the ideal of service as a basis of worthy enterprise.
<b>OD – Official Directory</b>	An RI publication. Issued by Rotary annually containing list of all clubs, names and addresses of all Presidents, Secretaries, time and place of meetings, etc. Can now be searched online at: <a href="https://my.rotary.org/en/search/official-directory">https:// my.rotary.org/en/search/ official- directory</a> A spiral bound version may be purchased by contacting Rotary staff by call (847) 866-4600.
<b>PER CAPITA DUES</b>	Dues each club pays to RI for each active, senior active and past service members.
<b>PETS</b>	President Elect Training Seminar. Held annually for incoming Presidents and partners to be trained in the administration of their club and to develop challenging projects and programs.
<b>PAUL HARRIS FELLOW (PHF)</b>	A form of recognition for financial or meritorious service to the Foundation or the community generally.
<b>PHF SUSTAINING MEMBER</b>	Recognizes individuals who have made contributions to RI Foundation in installments up to an aggregate of \$1,000.

<b>ROTARY</b>	Rotary Monthly Magazine each member receives.
<b>POLIO PLUS</b>	An international program of Rotary Foundation. To protect all the world's children from poliomyelitis through national immunization days, laboratory networks and reporting suspected cases.
<b>PROBUS</b>	Professional and Business. A Rotary sponsored group for retirees and semi-retired professional and business people.
<b>PROVISIONAL CLUB</b>	A group organizing to form a new club. Meets weekly until admitted to membership of Rotary International with a minimum of 25 charter members.
<b>RI - RIBI</b>	<b>R</b> otary <b>I</b> nternational. The association of Rotary Clubs throughout the world. <b>R</b> otary <b>I</b> nternational in Great <b>B</b> ritain and <b>I</b> reland.
<b>RIF</b>	Rotary International Foundation
<b>RINO</b>	Rotarian In Name Only (pejoratively)
<b>ROTA</b>	Rotary Overseas Travel Award
<b>ROTARACT</b>	A Rotary sponsored service group. For young people aged 18 to 30 who meet each two weeks to foster service to the local and international community.
<b>ROTARY CLUB FLAG</b>	The official flag of Rotary with emblem and club name, for display at club and district assemblies.
<b>ROTARY EMBLEM</b>	An emblem representing civilization and movement. A gear wheel with 6 spokes, 24 cogs, in colors of royal blue and gold. A key was added in 1923 to signify the wheel was a 'worker' not an 'idler'.

<b>ROTARY FOUNDATION</b>	A not-for-profit philanthropic corporation whose activities extend world-wide to achieve world understanding and peace.
<b>ROTARY THEMES OR MOTTOS</b>	Official slogans adopted annually by RI President. A theme that changes yearly to reflect the philosophy and programs for the year. The principal motto that remains constant is "Service Above Self"
<b>ROTARY VILLAGE CORPS</b>	Self-help groups of non-Rotarians sponsored by Rotary Clubs to improve community living conditions.
<b>ROTEX</b>	Organization of former Rotary Exchange Students.
<b>ROVE</b>	Rotary Overseas Vocational Exchange. A program to encourage vocational exchanges up to 12 weeks.
<b>RYLA</b>	Rotary Youth Leadership Award. A program of leadership training to assist young people.
<b>RYE</b>	Rotary Youth Exchange
<b>SISTER CLUB</b>	Relationship agreement between a local club and clubs in other districts/countries. To foster better understanding and fellowship, mutual support and cooperation on humanitarian projects.
<b>STANDARD CLUB CONSTITUTION</b>	Originally adopted in 1922. Provides the framework for all clubs in the world and is a condition to receiving a charter.

<b>THE 4-WAY TEST</b>	A measure of conduct and thinking for Rotarians. 1. Is it the truth? 2. Is it fair to all concerned? 3. Will it build goodwill and better friendships? 4. Will it be beneficial to all concerned? (non-official....5. Will it be fun?
<b>ROTARIAN MAGAZINE (Now called ROTARY)</b>	A Rotary publication. Award-winning publication to Rotarian members with a circulation of over 500,000, inspiring the creation of a host of Rotary regional magazines. Each member receives a monthly issue of Rotary Magazine. (Cost included in dues)
<b>THEME MONTHS</b>	Rotary International's focus in various months on major activities.
<b>VTT</b>	Vocational Training Teams are groups of professionals who travel abroad either to teach local professionals about a particular field or to learn more about their own.
<b>WORLD FELLOWSHIP COMMITTEE</b>	An international program. For the many groups of Rotarians sharing common sporting & vocational interest.
<b>YOUTH EXCHANGE</b>	An international youth program of exchange. Reciprocal 12-month secondary school exchanges between students sponsored by local and overseas districts and clubs.

## New Member **Red Badge** to **Blue Badge** Activity Check Sheet

Welcome to the Rotary Club of the Reedy River Greenville! Over the course of the next six months (or sooner if you choose!) we want to get to know you and also help you to get to know our fun, dedicated members! You'll learn more about the incredible work that Rotarians do in our local, national and international community. Use this Activity Check Sheet with the help of your sponsor/mentor as a way to guide your increased engagement in our club. *Thank you!*

**NAME:** \_\_\_\_\_

Month/Year of Your Induction into the Club \_\_\_\_\_ / \_\_\_\_\_

<b>Event / Activity</b>	<b>Date</b>	<b>Sponsor/Mentor Signature</b>
Update your profile at <a href="http://www.DACdb.com">www.DACdb.com</a>		
Update your profile at <a href="http://www.MyRotary.org">www.MyRotary.org</a>		
Attend New Member Orientation		
Serve as a 'Greeter' at a meeting		
Attend one Board Meeting*		
Attend a Committee Meeting		
Invite a Guest to a Rotary Meeting		
Attend & work at a Service Project		
Serve on a Duck Derby Subcommittee		
Attend a Rotary Social Event		
Receive & read the Rotary Basics		
Watch 'This is Rotary' video		
Give a Vocational/Classification Talk		
Attend a 'Health & Happiness or District Event		

Speak with your Sponsor / Mentor to help you locate any of the above and work with you to complete the activity.

NOTES:



---

## Rotary Club of the Reedy River Greenville Leadership For the 2021-2022 Rotary Year (July 1 to June 30)



**Robert L. Brown Jr.**  
President



**Cathy Harry**  
Membership Chair  
President-Elect



**Prudence Ann Taylor**  
Secretary



**Laurie M. Rappl**  
Treasurer



**Meghan A. Coffey**  
Club Director  
RYLA Chair



**Eric Michael Krichbaum**  
Club Director



**Sandy Wright**  
Club Director



**Rachel Bantly**  
Public Image/PR Chair



**Edward F. Irick III**  
Club Director  
Club Executive Secretary



**Alan Ellis Harry**  
Rotary Foundation Chair



**Theresa Marchi**  
Immediate Past President



A little history.....Our Rotary Club was chartered February 11, 2003 and was originally referred to as the Greenville Evening Club. However, in 2018 we changed our name to the **Rotary Club of the Reedy River Greenville**. This was to differentiate our club from the Rotary Club of Greenville Downtown.

*Note: This handbook is meant to assist in sharing information about Rotary International and our Rotary Club for its members and prospective members as a reference tool and is not inclusive of every detail of Rotary. Information is subject to change from time to time. We might have missed something but that's what Rotary Fellowship is all about! We will figure it out together! It's a living breathing document! And we hope you find it useful!*