

THE LAFAYETTE ROTARY CLUB

SEPTEMBER 11, 2018

THIS WEEK KEN MCMILLAN HAS THE PROGRAM

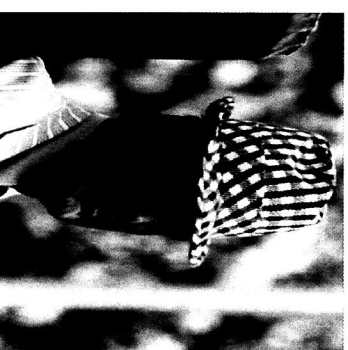
SEP	18	KEN SEALEY
	25	MERILYN VINES
OCT	2	ALLEN TUCKER
	9	MAC TUCKER
	16	STANLEY TUCKER
	23	DIANE SHERIFF
	30	BOARD MTG-NO MEAL
NOV	6	STEVE WHEELER
	13	JOSH YERTA
	20	BUSINESS MEETING
	30	BOARD MTG-NO MEAL

Today in History

1998 Independent counsel Kenneth Starr sends a report to the U.S. Congress accusing President Bill Clinton of 11 possible impeachable offenses.

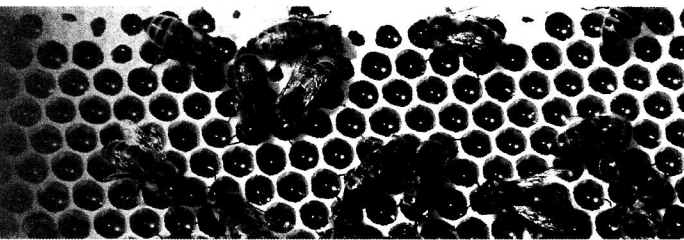
2001 Two passenger planes hijacked by terrorists crash into New York's World Trade Towers causing the collapse of both and deaths of 2,752 people

2001 Attempt by passengers and crew of United Airlines Flight 93 to retake control of their hijacked plane from terrorists causes plane to crash in Pennsylvania field killing all 64 people on board

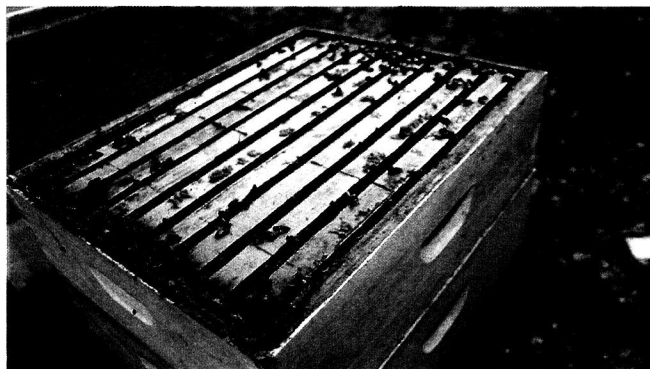


Famous Birthday:
Paul William "Bear"
Bryant was an American
college football player
and coach. He was best
known as the head coach
of the University of
Alabama football team.

Fact Sheet: Bee & Honey



- Bees pollinate 80 percent of flowering crops, which constitute one-third of the American diet.
- The queen honeybee is Alabama's official state agricultural insect.
- In 2016, Alabama had approximately 7,000 honey-producing colonies.



- Honey yield per colony averaged 52 pounds.
- Honey production totaled 364,000 pounds in Alabama and 162 million pounds in the U.S. in 2016.
- The average American consumes 1.61 pounds of honey each year.
- There are over 200,000 beekeepers in the U.S. Every state has honeybees and beekeepers.
- North and South Dakota combined produce a little more than one-third of the nation's commercial honey supply.
- Eighty-five percent of U.S. honey imports come from five countries: Vietnam, India, Argentina, Brazil and Thailand.
- A common honey variety in Alabama is cotton honey, a light-colored, delicately flavored honey.
- For every 60 pounds of honey produced, one pound of beeswax is made.
- There are three types of honeybees in a colony: the queen (fertile female), workers (infertile females) and drones (males).
- The peak population of a colony of honeybees usually occurs mid-summer and results in 60,000 to 80,000 bees per colony.
- A queen bee can lay up to 3,000 eggs per day.
- Honeybees are one of over 20,000 bee species and are not endangered.
- Honeybees must gather nectar from 2 million flowers to make 1 pound of honey.
- The average bee will make only one-twelfth of a teaspoon of honey in its lifetime.
- The honeybee is the only insect that produces food eaten by man.

Sources:
ABFnet.org
BuzzingAcrossAmerica.com
MatterofTrust.org
USDA.gov

James (Jim) Benjamin Spence

12/22/1933 - 08/30/2018



[OBITUARY & SERVICES](#) [PHOTOS & VIDEO](#) [CONDOLENCES](#) [SEND FLOWERS](#)

Obituary for James (Jim) Benjamin Spence

James (Jim) Benjamin Spence, LCOL, USAF (Ret.), was born in LaFayette, Alabama on December 22, 1933. After graduating from LaFayette High School in 1952, he entered Auburn University (then Alabama Polytechnic University) and graduated in 1956. While at Auburn he was a member of Pi Kappa Alpha fraternity, where he served as house manager, directing the physical operation of the fraternity house. After completing Air Force ROTC he was commissioned in the Air Force where he served for 20 years.

Jim served in Vietnam as a member of the Strategic Air Command (SAC) and in one 12-month tour flew 199 missions, many of them top secret. He later served as a senior officer at the USAF silo complex in Minot, North Dakota. Jim retired with the rank of Lieutenant Colonel.

Upon retirement from the Air Force, Jim married the former Carol Lambert, widow of Auburn's head basketball coach, Paul Lambert, who died an untimely death in a fire in Columbus, Georgia. Jim and Carol lived in Auburn for the past thirty-seven years.

Jim was a faithful and active member of the First Baptist Church of Auburn during his residence there. He served on the Board of Directors of the Farmers and Merchants Bank in LaFayette for several years, retiring in 2017. He will be especially remembered for his faithful devotion to his family and many friends, his service to the nation, and his support for his alma mater, Auburn University.

Jim is survived by his widow, Carol Lambert Spence, his two step-daughters, Julie Diane Lambert and Jill Denise Lambert Sasse, his grandchildren Katie Crider Harper, Taylor Sasse Newell, Caroline Sasse, Rachel Sasse, and Paul Spence M. Sasse, along with his sister-in-law, Faye Spence Bowling and two nieces, Kayron Spence Campbell and Susan Whitworth.

Jim will be buried with full military honors at LaFayette City Cemetery on Friday, September 14, 2018 at 2:30 p.m. Visitation will precede the graveside service and will be held at Jeff Jones Funeral Home in LaFayette, Alabama from 1-2 p.m.

Memorial donations in memory of Jim may be made to the First Baptist Church of Auburn or the Wounded Warrior Project.

Send flowers to the service of James (Jim) Benjamin Spence

Share



SHARE A MEMORY

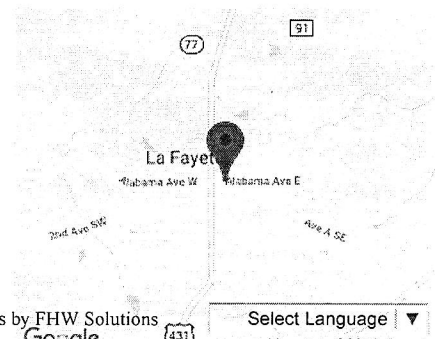
SEND FLOWERS

Services

14 Visitation

SEP 1:00 PM
Jeff Jones Funeral Home
152 Alabama Ave. E.
Lafayette, AL 36862

[Get directions »](#)



[TEXT](#) [EMAIL](#) [GOOGLE MAPS](#)

Obituaries by FHW Solutions

Select Language

[Admin Login](#)