



A Note From the Governor

Dear Leigh,



Rotary International focuses on "World Understanding" in February. This seems an appropriate topic to which to direct your attention at the beginning of this month's newsletter.

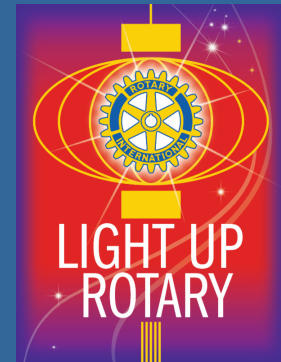
District 6710 is reaching out in the world and assisting four other districts with their global grant projects:

- District Designated Funds (DDF) are being allocated to the Heart 2 Heart project in Mexico specifically for kidney transplants and cleft palate surgery;
- A mammography bus being purchased by a district in Louisiana;
- A Texas district sponsoring a Maternity and Infant Care Hospital in Guatemala;
- Assistance to eliminate cervical cancer in New Guinea by another Louisiana district.

We have a history of understanding challenges faced by the population in various parts of the world and commendation is due to the many clubs in our district that are participating in global projects. Next month, our district will submit a global grant to assist with the elimination of cervical cancer in Haiti, which will be supported with DDF by other districts in the "Heart of America" (Zones 30-31).

The February edition of [The Rotarian](#) magazine focuses on World Understanding, beginning with RI President Gary C. K. Huang's opening comments in which he shares that he attended a wheelchair race in Istanbul and learned how Turkish Rotarians are working to improve the lives of people with disabilities. In Lima, Peru, he talked with a former Group Study Exchange team member who waited 20 years to be invited to join Rotary and heard how becoming a Rotarian has transformed her life.

"We Are Brushing Against Death Every Day" includes mention of Elizabeth Mulbah, Rotarian in Liberia, who helps train health



In This Issue

[New RI Pilot Program](#)

[RLI Louisville](#)

[District Banner Design](#)

[AWARD: Outstanding Service Project](#)

[Speech Contest](#)

[Peace Fellowships](#)

[UPDATE: New RI Invoice Process](#)

[Shoe Project](#)

[Elves of interact](#)

[Bardstown: Rotary in Action](#)

[Murray Celebrates 90!](#)

[TRF New Funding Model Video](#)

[Bourbon Ball: Earn \\$](#)

[Frankfort International Dinner](#)

[UN Day Celebration](#)

[Danville: International Dinner](#)

[Polio Update](#)

[Dates to Remember](#)

[Club Anniversaries](#)

[Fellowship Support](#)

[Links](#)

professionals on how to stay safe when dealing with Ebola. Pictured within this article are buckets of a chlorine solution placed at the entrance to most public buildings; the Rotary Club of Monrovia, with support from the club in Marlow, England, is distributing these buckets to local communities and providing food for quarantined families.

My closing is (you guessed it) an invitation to attend the District Conference in Paducah May 15-17! Registration information will be available soon. Happy Valentine's Day!

Yours in Rotary Service,

[Jayne Crisp](#)

District Governor, 2014-15



Looking for Flexibility in Rotary? Want to Shake up the Club?

You mean we don't HAVE to have speakers every week?!

We can change our membership requirements?!

We can try a different leadership structure?! Like Co-presidents?

We can change the focus to engagement & retention (& away from attendance)?!

We can swap times or meet at different locations or substitute an event for a meeting...regularly?!

APPLY FOR THE INNOVATIVE AND FLEXIBLE CLUB PILOT

The RI Board of Directors is expanding the [Innovative and Flexible Club pilot](#) from 200 to 1,000 clubs beginning 1 July 2015 through 30 June 2017. Feedback from Rotary surveys and focus groups has shown that **prospective and current members wish for flexibility** to become or stay involved with a Rotary club. The Board would like more supporting data on how allowing clubs flexibility affects membership and club operations. The Innovative and Flexible Club pilot, will evaluate the impact of various changes to meeting format, leadership structure, membership qualifications and requirements on a club's ability to sustain and increase membership, implement successful programs and service projects, and support The Rotary Foundation. To participate in this pilot, clubs must:

- Have chartered before 30 June 2010
- Be in good financial standing
- Have at least 20 members
- Not be participating in the 2011-17 membership pilots



The deadline for submitting a [pilot application form](#) is **31 March 2015**. District and club officers will be notified of clubs selected to participate in June 2015. Please [contact us](#) @ RI with any questions.

Don't Forget...



Mark your calendar for these important deadlines and events

-February-

- 2/7 Deadline for Global Scholarship Application
- 2/7 Paducah 100 Celebration
- 2/10 Pre PETS Elizabethtown
- 2/16 Pre PETS Eminence
- 2/17 Pre PETS Bowling Green
- 2/23 Murray 90 Celebration
- 2/21 RLI, Lexington
- 2/24 Pre PETS Madisonville
- 2/25 Pre PETS Louisville

-March-

- 3/1 Deadline for Banner Design
- Deadline for Significant Achievement Award
- 3/2 Pre PETS Springfield
- 3/7 Interviews for Global Scholarships, Elizabethtown RLI, IN Wesleyan, Louisville
- 3/20-22 Mid-South PETS, Nashville, TN
- 3/31 Deadline to apply for Flexible/Innovative Pilot

-May-

- 5/15-17 District Conference, Paducah
- 5/31 Peace Fellowship Applications due

-June-

- 6/6-9 RI Convention, Sao Paulo, Brazil
- 6/20 District Assembly; TBA
- 6/30 Notification of selection for Innovative/Flexible Pilot

-August-

- 8/31 District Grants Deadline

[RI Calendar](#)
[District Calendar](#)

CLUB ANNIVERSARIES

RLI in Louisville

DON'T MISS THIS UNIQUE OPPORTUNITY IN LOUISVILLE!!!



District 6710 will be holding our next Rotary Leadership Institute on **Saturday, March 7, 2015** at Indiana Wesleyan University off Blakenbaker Lane in Louisville. We have never held an RLI event in Louisville so don't miss this opportunity!

For those of you planning to attend District 6740 RLI on February 21 in Lexington, this will give you a great chance to get two sessions done very quickly. If you've even thought about attending an RLI in the past, this is the occasion to do it. You will learn some great leadership skills for both Rotary and your professional life. Register early, space is limited and we are expecting a big gathering. **Cost is \$75 and includes lunch. The District will reimburse 50% back to the club for the cost.** You can't beat that deal!

[Register here](#) or contact [Terri Prater](#) at 502-432-2650.

District Banner Design Due 3/1 <==Click here

AWARD: Outstanding Community Service Project



RI has established a Significant Achievement Award to recognize Rotary clubs for outstanding community service projects. Each District Governor has the opportunity to select one outstanding project from the district and forward that nomination to RI for consideration. To be eligible, projects must:

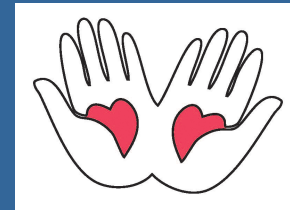
- address a significant problem or need in the local community
- involve most or all of the club members in personal rather than monetary service
- be commensurate with the club's size and resources
- be capable of emulation by other Rotary clubs
- be currently active or reach a conclusion during the Rotary year for which the award is given
- be carried out by a single Rotary club

In order to be considered, download the [Significant Achievement Award nomination form here](#). Please note the nomination form is a writeable PDF that will allow you to type directly in the space provided. Nominations must be typed; handwritten nomination forms will not be considered. Please save a copy of your nomination form and email it to **DG Jayne by March 1st.**

Speech Contest

Bardstown, 21-Jan-80
Grayson County, 31-Jan-38
Radcliff, 14-Jan-75

FELLOWSHIP SUPPORT



None reported this month

Questions?

Contact our District
Administrative Assistant
Leigh A. Perry
leigh@rotarydistrict6710.org
(502) 592-0930



Links

[District 6710](#)

[Zones 30-31](#)

[GIVE](#)

[Rotary International](#)

Find us on Facebook

The 2014-15 District Speech Contest is in full gear! If you have not already done so, please send in contest dates and contest contact /chair to [Stan Klausing](#). Club contests must be completed by **March 15, 2015**.



Follow us on [twitter](#)

Contact the high schools in your club's service area to alert them of the contest and be sure to follow up. A student sign up form and release has been included in the contest packets and on the web site and should be completed by all contestants prior to their participation. After your contest, be sure to remit the contest result form from each participating club after your contest. Advanced Contest Host Clubs are still being sought in the Central and East Regions. Contact [Tommy Reed](#) if your club is interested in hosting in the Central Region or Stan Klausing if in the East Region. If you are in the West Region, you can forward your information or questions to [Tom Grassham](#).

Peace Fellowship Applications



The challenges of the 21st century require people skilled in the art of diplomacy, mediation and conflict resolution. The Rotary Peace Fellowship program was developed to meet this very need. Each year, Rotary selects up to 100 non-Rotary professionals from around the world to receive fully funded academic fellowships at one of the Rotary peace centers. These competitive fellowships cover tuition and fees, room and board, round-trip transportation, and all internship and field-study expenses.

Applications for the 2016-17 Rotary Peace Fellowship program are now being accepted. The deadline for applicants to submit applications to their district is **May 31**. Districts must submit endorsed applications to The Rotary Foundation by July 1.



Click here for complete details of all of the [Rotary Peace Centers and the application process](#). District 6710 clubs are encouraged to recruit qualified candidates in their area to apply for the fellowship. Peace Fellow applications that have been endorsed by a local club president should be sent to: [Sally Ray](#), Chair

District 6710 Rotary Peace Fellowship Committee
530 Covington Grove Court, Bowling Green, KY 42104
(270) 991-0846

[New RI Invoice Process Update](#) <==Click here

Several club officers have reached out concerning the invoice from Rotary International for semi-annual dues. We received the following information from our representative at RI:

- The new club invoice will be sent to clubs by the end of January.
- All club officers will receive the club invoice by email if they have a valid address registered in the Rotary database. Club officers need to add ri.clubfinance@rotary.org to their contacts so emails from Rotary International aren't rejected or filtered as SPAM. The clubs will also receive an invoice by mail if they have not opted out of a paper version.
- Click above for the [New Club Invoice Frequently Asked Questions](#) document and feel free to share.

District Project: SHOES

Hopefully all clubs have picked their "shoe cheerleader" for this very worthy District service project. If we can average 4 pairs of shoes per member, we can exceed our [goal of 10,000](#) pairs of shoes. We were so close last year, I feel certain we can do it this time! All club Presidents and AG's will be receiving a package directly from The Buckner Foundation very soon. There will be valuable information on ideas for collecting shoes, posters, and instructions on how to pack your shoes in boxes before taking to District Conference.



If you are looking for a speaker to come to your club, I have the perfect person for you. Her name is Danielle Earley, she is the daughter of Al Earley from the LaGrange Club. Danielle was adopted by the Earley's at the age of 2 ½ from her birth country of China. As an orphan herself as a child, Danielle can give your club a firsthand account of the importance of a simple pair of shoes. Danielle is now 18 years old and her story is very compelling to motivate even the most doubtful Rotarian of the significance this project can make in a child's life! You can reach Danielle or her father Al at 502-225-9456. For further information contact chair [Terri Prater](#) 502-432-2650.

Elves of Interact (Trigg County)



Interact isn't just a club; it's a hobby and a passion. Throughout the school year and even in the summer, students partake in numerous community service activities ranging from community projects to global projects. Following the footsteps of past and present Interact

members and Rotarians, students are given the opportunity to experience - first hand - the tremendous feeling that comes with helping people in need.

The month of December is one of the busiest months for Trigg County Interact. Between balancing the end of the semester and early holiday festivities, Interact members maintained their schedules with community service projects. Helping with Toys for Tots and The Angel Tree have become annual traditions in Trigg County. Together, sponsor Simone Parker and over twenty Interact members shopped the day away looking for the perfect Christmas gifts. This year, Interact was honored to help eleven Toys for Tots kids and two Christmas angels, giving thirteen kids the joy of having gifts to open on Christmas morning.

Trigg County Interact is always looking for new ideas and projects to help the community. Whether local, state, national, or global, Interact is always willing to lend a helping hand. Students volunteer their time to help those in need, knowing that the outcome is far greater than money could ever buy. For Trigg County, these are just two of the projects on a year long list of activities that have already been completed or are waiting to begin! In Interact, the enthusiasm to help never dies.

By Dalton Barnes, TCHS Interact Historian

Rotary in ACTION: Bardstown



On Martin Luther King Day, Bardstown Rotary Club members and Bethlehem InterAct met in Bethlehem Cafeteria to package 22,740 meals for Kids against Hunger. Led by Dale Ohler from Louisville Kids against Hunger, the group packaged a fortified soy/rice casserole-style meal

specifically formulated to meet the nutritional needs of a starving child. These meals will be shipped by a newly formed "Compassion Coalition" which is providing a container of emergency aid in response to the West Africa Ebola crisis. There is such a great a need for those suffering from the impact of the Ebola crisis. Total involvement include a dozen Rotarians, 12 students from Nelson County Honor Society, 10 students from St. Joe elementary, 3 Bethlehem Faculty and over 50 members of the Bethlehem Interact Club.



Murray celebrates 90!!

The Murray Rotary Club is hosting a Rotary 90th Anniversary Celebration and Reception on Monday, February 23. It will be held from 6-8 p.m. in downtown Murray. Renowned actor and MSU professor, Robert Valentine will portray Rotary founder Paul Harris during our festivities. There will also be an opportunity for your club to share its unique activities and community service projects with other clubs in our region. For more information, contact President [Warren Edminster](#) 270-978-1997.



TRF: The New Funding Model



The Rotary Foundation's Funding Model

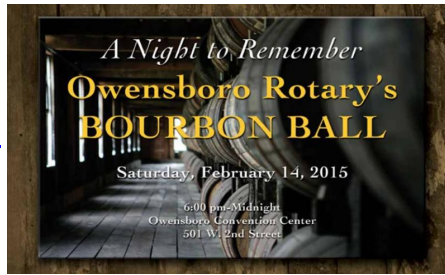
Watch the video as Rotary International CFO Lori Carlson interviews Ian Riseley, Chair of The Rotary Foundation's Finance Committee, about how Global Grants will be funded beginning 1 July, 2015.

To ensure our Foundation's long-term financial sustainability, the Trustees have approved a funding model, effective 1 July 2015. The Rotary Foundation needs a more predictable level of financial support of revenue to pay its annual operating expenses and provide an operating reserve. For more information about Rotary funds, see page 60 of *The Rotarian*. Rotary is "Doing Good In the World" because of contributions to The Rotary Foundation. This month would be an excellent time to make a gift to TRF, if you have not done so already this year.

[Questions or comments?](#)

7th Annual Bourbon Ball; Earn \$ for Your Club

Looking for that special Valentine's celebration? The Owensboro Club is inviting all Rotarians to their [Night to Remember](#) on **Valentine's Day, Saturday, February 14**. As a special opportunity, the organizing committee has offered to remit a



portion of the proceeds back to any Rotary Club that participates in this event. If your members attend or invite others to attend on your club's behalf, a portion of the proceeds will be remitted back to your Club's Foundation or Club project. Contact [Chris Poynter](#) for more information.

Watch this Space for Grants Management Seminar info

Frankfort International Dinner & Silent Auction



The Rotary Club of Frankfort is hosting its 18th Annual International Dinner on Thursday, February 26, beginning at 6:30 PM at the Capital Plaza Hotel in Frankfort. The speaker will be [Ambassador Carey Cavanaugh](#) from the UK Patterson School of Diplomacy. The International Dinner will include a silent auction to support a project to diagnose cervical cancer among women in Haiti. District 6710 Rotarians and guests are invited to attend; attire is business casual. The charge for the meal is \$25 per person. Seating is limited and you are asked to RSVP by Friday, February 20 to [Frankfort Club President Joyce Honaker](#).

United Nations Day Celebration



DG Jayne, DG John Salyers, D6740 & Chris Whatley, ExD, CEO & Pres. of UNA-USA are pictured at the United Nations Day Celebration, which was held in Louisville, October 18, 2014. Co-sponsors included the Frankfort Rotary Club, District 6710, and District 6740. As the keynote speaker, Mr. Whatley's topic was "2030 Starts Today: The United Nations: The Global Fight to Eliminate Extreme Poverty, Advance Human Rights, and Empower Women".

UNA-USA is a membership organization dedicated to building understanding of and support for the work of the UN among the American people. As a part of the UN Foundation, UNA-USA works to foster awareness of the UN through various national initiatives and programs.

Rotary International and the United Nations have collaborated since the mid-1940s, helping those in need and tackling global challenges.

Danville 5th Annual International Dinner

Chow down with Danville Rotary at their Fifth Annual International Dinner, a community event that brings together food from over 20 countries. Indulge in a sampling of authentic international cuisine on Saturday, March 21, 2015, in Chowan Hall at Centre College (under the viaduct). Join us for social time at 6:00 p.m., followed by dinner at 6:30 p.m. Tickets are \$50.00 each, and all proceeds will benefit charities supported by Danville Rotary. For tickets or more information, contact Sharon Howell at 859-238-3817.



Polio Update: WHO

PolioPlus Chair PDG Ed Kalmey reports that the end game is in sight! The WHO has reported that Polio cases are down vs last year



- 416: Total # of wild cases in 2013
- 358: Total number of wild cases in 2014
- 3: Total number of wild cases in 2015
- 2: Total # of wild cases reported in past week for 2014
- 2: Total # of wild cases reported in past week for 2015
- 3: Total in endemic countries in 2015
- 0: Total in non-endemic countries in 2015

Afghanistan: No new WPV1 cases were reported in the past week. That makes 28 WPV1 cases in 2014 compared to 14 in 2013. Total number for 2015 is 0.

Nigeria: No new WPV1 cases were reported in the past week. The total number of WPV1 cases for 2014 is six, and for 2013 is 53. Total number for 2015 is 0.

Pakistan: Four new WPV1 cases were reported in the past week including 2 with onset of paralysis in 2015 . . .The total number of cases for 2013 remains 93. The total number of cases for 2014 is now 305. Total number for 2015 is 3.

....Don't forget to make your clubs' contribution if you haven't yet for 2014-15. RI asks each club give \$2000 or what you can. We're so close!



Newsletter Update:

This newsletter was sent to all Rotarians listed in DACDB with an email address. If you received this in error, please contact [Leigh Perry](#). If you want to

forward it, you can use the handy "forward" button at the bottom of the page.



[Forward email](#)



This email was sent to leigh@rotarydistrict6710.org by info@rotarydistrict6710.org | [Update Profile/Email Address](#) | Rapid removal with [SafeUnsubscribe™](#) | [Privacy Policy](#).



Try it FREE today.

Rotary District 6710 | 3908 Fairfield Meadows Dr | Louisville | KY | 40245