

PROJECT ESTIMATE

WASHER/DRYER ESTIMATE #1

CONTACT: BRINKMAN, ROGER
CUST #: 161563273

SALESPERSON: GABBARD, KATIE
SALES #: 1885886

PROJECT NUMBER: 470673621

DATE ESTIMATED: 04/27/16

QTY	ITEM #	ITEM DESCRIPTION	VEND PART #	PRICE
1	671798	LG 5.2 cu ft Washer WM9000HWA	WM9000HWA	1200.00
1	671792	LG 9.0 Cu Ft Electric Dryer DL	DLEX9000W	1200.00
1	291931	LG 27 IN STACK KIT KSTK1	KSTK1	25.00
1	645897	2-CT 6-FT BRD SS WM CONN(-3669	SL12-72WA DL	10.00
1	333552	4 WIRE DRYER CORD 6-FT	UTD100406	10.00
1	433290	4.5-INX8-FT DRYVNT CLMPS MFX(I	VTL0056	10.00
TOTAL FOR ITEMS				2455.00
FREIGHT CHARGES				0.00
DELIVERY CHARGES				0.00
TAX AMOUNT				171.85
TOTAL ESTIMATE				2626.85

This Quote is valid until 05/27/16.

Katie Gabbard

MANAGER SIGNATURE

4/27/16

DATE

THIS ESTIMATE IS NOT VALID WITHOUT MANAGER'S SIGNATURE.
THIS IS AN ESTIMATE ONLY. DELIVERY OF ALL MATERIALS CONTAINED IN THIS ESTIMATE ARE SUBJECT TO AVAILABILITY FROM THE MANUFACTURER OR SUPPLIER. QUANTITY, EXTENSION, OR ADDITION ERRORS SUBJECT TO CORRECTION. CREDIT TERMS SUBJECT TO APPROVAL BY LOWES CREDIT DEPARTMENT.

LOWES IS A SUPPLIER OF MATERIALS ONLY. LOWES DOES NOT ENGAGE IN THE PRACTICE OF ENGINEERING, ARCHITECTURE, OR GENERAL CONTRACTING. LOWES DOES NOT ASSUME ANY RESPONSIBILITY FOR DESIGN, ENGINEERING, OR CONSTRUCTION; FOR THE SELECTION OR CHOICE OF MATERIALS FOR A GENERAL OR SPECIFIC USE; FOR QUANTITIES OR SIZING OF MATERIALS; FOR THE USE OR INSTALLATION OF MATERIALS; OR FOR COMPLIANCE WITH ANY BUILDING CODE OR STANDARD OF WORKMANSHIP.

PROJECT ESTIMATE

WASHER/DRYER ESTIMATE #1

CONTACT: BRINKMAN, ROGER
CUST #: 161563273

SALESPERSON: GABBARD, KATIE
SALES #: 1885886

PROJECT NUMBER: 470673621

DATE ESTIMATED: 04/27/16

QTY	ITEM #	ITEM DESCRIPTION	VEND PART #	PRICE
1	671798	LG 5.2 cu ft Washer WM9000HWA	WM9000HWA	1200.00
1	671792	LG 9.0 Cu Ft Electric Dryer DL	DLEX9000W	1200.00
1	291931	LG 27 IN STACK KIT KSTK1	KSTK1	25.00
1	645897	2-CT 6-FT BRD SS WM CONN(-3669	SL12-72WA DL	10.00
1	333552	4 WIRE DRYER CORD 6-FT	UTD100406	10.00
1	433290	4.5-INX8-FT DRYVNT CLMPS MFX(I	VTL0056	10.00
TOTAL FOR ITEMS				2455.00
FREIGHT CHARGES				0.00
DELIVERY CHARGES				0.00
TAX AMOUNT				171.85
TOTAL ESTIMATE				2626.85

This Quote is valid until 05/27/16.

MANAGER SIGNATURE

DATE

THIS ESTIMATE IS NOT VALID WITHOUT MANAGER'S SIGNATURE.
THIS IS AN ESTIMATE ONLY. DELIVERY OF ALL MATERIALS CONTAINED IN THIS
ESTIMATE ARE SUBJECT TO AVAILABILITY FROM THE MANUFACTURER OR SUPPLIER.
QUANTITY, EXTENSION, OR ADDITION ERRORS SUBJECT TO CORRECTION. CREDIT
TERMS SUBJECT TO APPROVAL BY LOWES CREDIT DEPARTMENT.

LOWES IS A SUPPLIER OF MATERIALS ONLY. LOWES DOES NOT ENGAGE IN THE PRACTICE
OF ENGINEERING, ARCHITECTURE, OR GENERAL CONTRACTING. LOWES DOES NOT ASSUME
ANY RESPONSIBILITY FOR DESIGN, ENGINEERING, OR CONSTRUCTION; FOR THE
SELECTION OR CHOICE OF MATERIALS FOR A GENERAL OR SPECIFIC USE; FOR
QUANTITIES OR SIZING OF MATERIALS; FOR THE USE OR INSTALLATION OF MATERIALS;
OR FOR COMPLIANCE WITH ANY BUILDING CODE OR STANDARD OF WORKMANSHIP.

\$2,455.⁰⁰

\$2,332.25 (5% off w/ Lowe's Care)

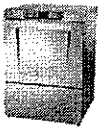
\$2,495.51
Total w/ Tax

4/21/2016

To:
Elizabeth Kestler
Director

Project:
Columbus Love Chapel
Hobart Quote

From:
Zesco Products, Inc.
Cindy Montgomery
640 N Capitol Ave
Indianapolis, IN 46204
(317) 269-9300 (office)
(317) 418-9668 (mobile)

Item	Qty	Description	Sell	Sell Total
1	1 ea	DISHWASHER, UNDERCOUNTER  Hobart Model No. LXEC-3 LXe Dishwasher, undercounter, 23-15/16"W x 23-9/16"D x 32-1/2"H, low temperature chemical sanitizing, (34) racks/hr, fresh water rinse, .74 gal/rack, delime notification, auto chemical priming, service diagnostics, detergent, rinse aid & sanitizer pumps, cULus, NSF, ENERGY STAR® 1 ea 120v/60/1-ph, 13.4 amps 1 ea Standard warranty - 1-Year parts, labor & travel time during normal working hours 1 ea PWRCORD-KIT-LXEC 1 ph power cord kit for LXeC, LXePR & LXGePR Weight: 150 lbs total	\$5,319.00	\$5,319.00
			ITEM TOTAL:	\$5,454.00
2	1 ea	DELIVERY Custom Model No. DELIVERY: Zesco Products will receive, uncrate, deliver, and install the new machine.	\$650.00	\$650.00
Total				\$6,104.00

Note: Please provide copy of Tax Exemption Certificate upon purchase.

Acceptance: _____ Date: _____

Printed Name: _____

Project Grand Total: \$6,104.00

HOBART701 S Ridge Avenue, Troy, OH 45374
1-888-4HOBART • www.hobartcorp.com**LXe
HOT AND COLD****HOBART****STANDARD FEATURES**

- 32 racks per hour – LXeH
- 34 racks per hour – LXeC
- .74 gallons of water per rack
- Hot water or chemical sanitation units available
- Low chemical alert indicators
- Sense-A-Temp™ booster heater capable of 70° rise, provided on LXeH models
- Delime notification with cycle
- Chemical pump “auto-prime”
- Service diagnostics
- Deep drawn stainless steel tank
- Microcomputer, top mounted controls with digital cycle/temperature display
- Revolving upper and lower anti-clogging wash arms
- Revolving upper and lower rinse arms
- Removable stainless steel scrap screen
- Corrosion resistant pump
- Automatic pumped drain
- 17" door opening
- Automatic fill
- Detergent and rinse aid pumps standard (plus sanitizer pump on chemical machine)
- Electric tank heat
- Two dishracks – one peg and one combination type

STANDARD VOLTAGES

- 120/208-240(3W)/60/1 (LXeH model only)
- 120/60/1 (LXeC model only)

OPTIONS AT EXTRA COST

- 208-240(2W)/60/1 (LXeH model only)
- 208-240/60/3 (LXeH model only)

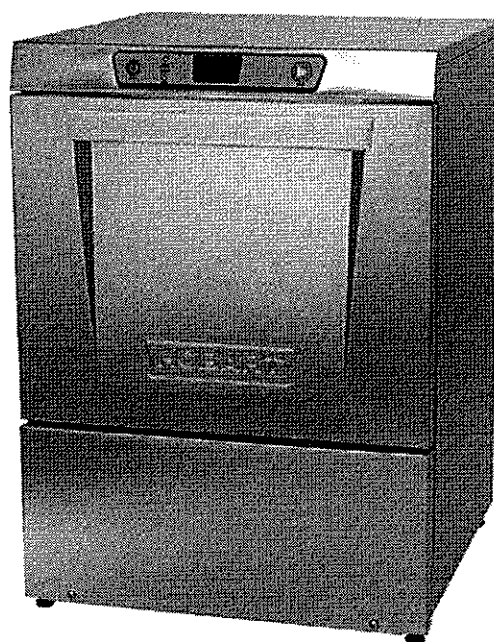
MODELS

- LXeC
- LXeH

ACCESSORIES

- Power cord kits
- Stainless steel base with 6" legs
- 17" stainless steel stand with storage
- External caster kit
- DWT-LXe drain water tempering kit

Specifications, Details and Dimensions on Back.

**LXe HOT AND COLD**

LXeH HOT

HOBART

701 S Ridge Avenue, Troy, OH 45374
1-888-4HOBART • www.hobartcorp.com

NOTICE

Required flowing water pressure to the dishmachine is 15-65 PSIG. If pressures higher than 65 PSIG are present, a pressure regulating valve must be installed in the water line to the dishmachine (by others). Pressure gauge not required on pumped rinse machines.

Important: The chemical containers should be placed no higher than 10" above floor.

If chemical containers are to be placed in cabinet adjacent to machine, a 1/2" dia. hole is required in the cabinet to run chemical supply line.

Notes:

- All vertical machine dimensions taken from floor may be increased by 1".
- Moist air escapes from the door. Use only moisture resistant materials adjacent to dishmachine sides and top.
- A vent hood is not recommended above the undercounter dishmachine since it does not produce excessive vapors.

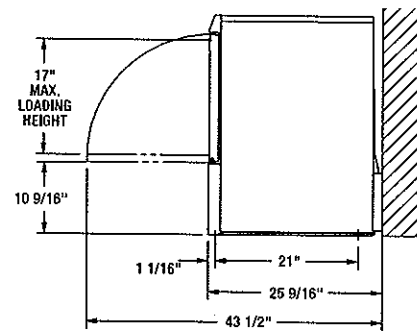
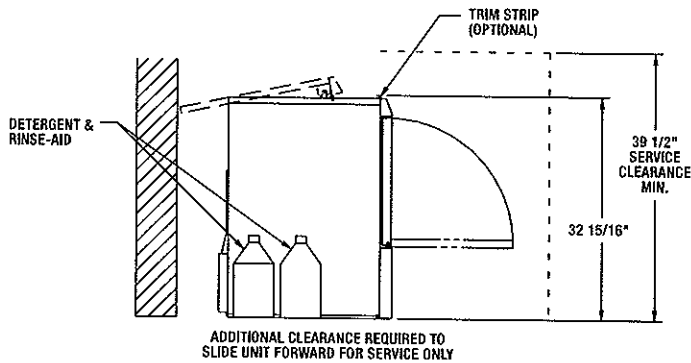
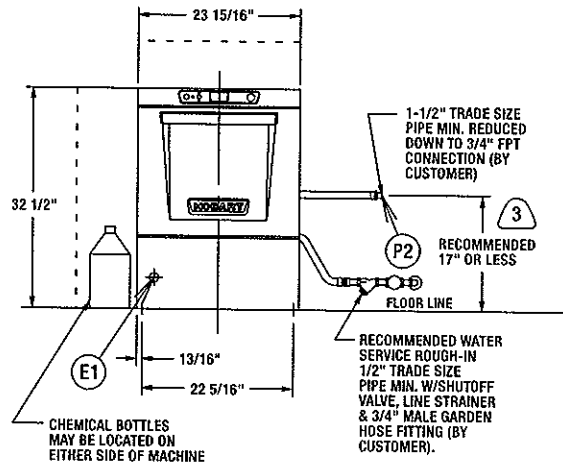
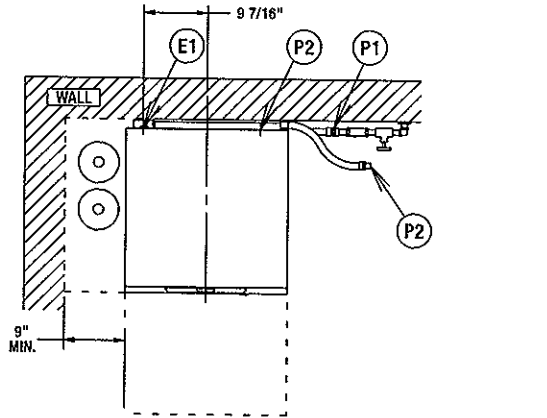
Plumbing notes:

- Water hammer arrestor (meeting ASSE-1010 Standard or equivalent) to be supplied (by others) in common water supply line at service connection.
- Recommended water hardness to be 3 grains or less for best results.
- If drain hose is looped above a sink, the loop must not exceed 38" AFF.

**CONNECTION INFORMATION
(AFF = ABOVE FINISHED FLOOR)**

LEGEND

- E1** ELECTRICAL CONNECTION: 1-3/8" DIA. HOLE FOR 1" TRADE SIZE CONDUIT; 4-5/8" AFF.
- P1** SINGLE FILL AND RINSE CONNECTION: 3/4" FEMALE GARDEN HOSE FITTING ON 6' LONG HOSE SUPPLIED WITH MACHINE.; 110°F WATER MIN FOR LXeH
- P2** DRAIN CONNECTION: 5/8" BARB FITTING WITH 6' LONG HOSE SUPPLIED WITH MACHINE.



HEAT OUTPUT, BTU/HR		
MODEL	LATENT	SENSIBLE
LXeH	4600	4000

SHIPPING WEIGHTS		LXeH
NET WEIGHT OF MACHINE		150 LBS
DOMESTIC SHIPPING WEIGHT		170 LBS

MODEL	VOLTS/HERTZ/PHASE	RATED AMPS	MIN SUPPLY CKT CONDUCTOR AMPACITY	MAX PROTECTIVE DEVICE
LXeH	208-240/60/1	30.5	40	40
	120/208-240(3W)/60/1*	30.5	40	40
	208-240/60/3	23.9	30	30
	220-240/50/1	30.5	40	40

NOTE: FOR SUPPLY CONNECTIONS, USE COPPER WIRE ONLY RATED AT 90°C MINIMUM.
* THIS SYSTEM REQUIRES THREE POWER WIRES WHICH INCLUDES A CURRENT CARRYING NEUTRAL, AN ADDITIONAL FOURTH WIRE MUST BE PROVIDED FOR MACHINE GROUND.
ACCESSORY CORD KIT AVAILABLE FOR ALL MACHINES

WARNING

Electrical and grounding connections must comply with the applicable portions of the National Electrical Code and/or other local electrical codes.

Plumbing connections must comply with applicable sanitary, safety and plumbing codes. Drain and fill line configurations vary, some methods are shown on this drawing.

MODELS:
LXeH
00-947871
REV C

HOBART

701 S Ridge Avenue, Troy, OH 45374
1-888-4HOBART • www.hobartcorp.com

**LX_eC
COLD**

⚠ WARNING

Do not premix other chemicals and sodium hypochlorite (liquid bleach). Mixing may cause hazardous gas to form.

NOTICE

Required flowing water pressure to the dishmachine is 15-65 PSIG. If pressures higher than 65 PSIG are present, a pressure regulating valve must be installed in the water line to the dishmachine (by others).

Pressure gauge not required on pumped rinse machines.

Important: Chemical containers should be placed no higher than 10" above floor.

If chemical containers are to be placed in cabinet adjacent to machine, a 1/2" dia. hole is required in the cabinet to run chemical supply line. Use only 6% or 8.4% sodium hypochlorite (liquid bleach) as sanitizing chemical to insure proper operation of dishmachine.

Certain materials including silver plate, aluminum and pewter are attacked by sodium hypochlorite (liquid bleach). See instructional manual.

Notes:

- All vertical machine dimensions taken from floor may be increased by 1".
- Moist air escapes from the door. Use only moisture resistant materials adjacent to dishmachine sides and top.
- A vent hood is not recommended above the undercounter dishmachine since it does not produce excessive vapors.

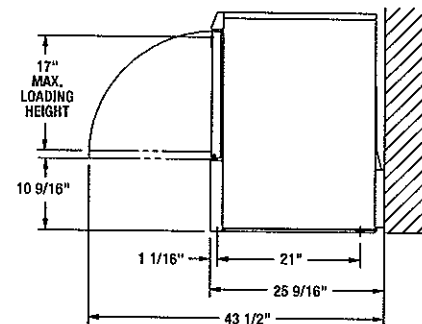
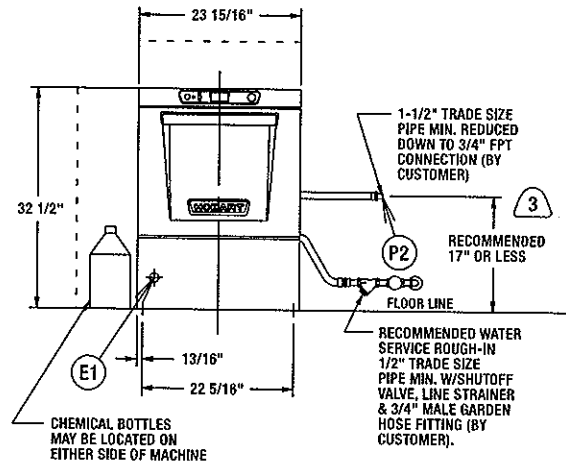
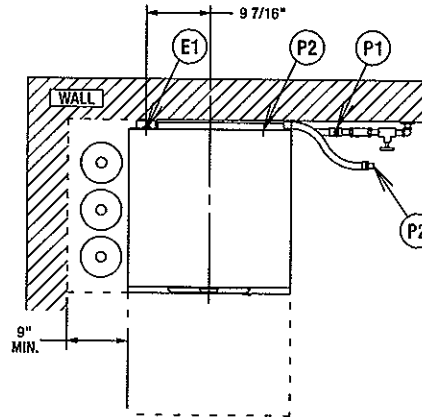
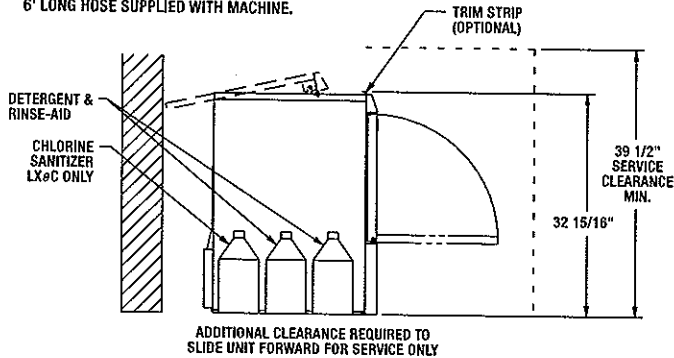
Plumbing notes:

- Water hammer arrestor (meeting ASSE-1010 Standard or equivalent) to be supplied (by others) in common water supply line at service connection.
- Recommended water hardness to be 3 grains or less for best results.
- If drain hose is looped above a sink, the loop must not exceed 38" AFF.

**CONNECTION INFORMATION
(AFF = ABOVE FINISHED FLOOR)**

LEGEND

- E1 ELECTRICAL CONNECTION: 1-3/8" DIA. HOLE FOR 1" TRADE SIZE CONDUIT; 4-5/8" AFF.
- P1 SINGLE FILL AND RINSE CONNECTION: 3/4" FEMALE GARDEN HOSE FITTING ON 6' LONG HOSE SUPPLIED WITH MACHINE.; 120°F WATER MIN. FOR LX_eC, 140°F RECOMMENDED.
- P2 DRAIN CONNECTION: 5/8" BARB FITTING WITH 6' LONG HOSE SUPPLIED WITH MACHINE.



HEAT OUTPUT, BTU/HR		
MODEL	LATENT	SENSIBLE
LX _e C	1900	800

SHIPPING WEIGHTS		LX _e C
NET WEIGHT OF MACHINE		150 LBS
DOMESTIC SHIPPING WEIGHT		170 LBS

MODEL	VOLTS/HERTZ/PHASE	RATED AMPS	MIN SUPPLY CKT CONDUCTOR CAPACITY	MAX PROTECTIVE DEVICE
LX _e C	120/60/1	13.4	20	20

NOTE: FOR SUPPLY CONNECTIONS, USE COPPER WIRE ONLY RATED AT 90°C MINIMUM. ACCESSORY CORD KIT AVAILABLE FOR ALL MACHINES

⚠ WARNING

Electrical and grounding connections must comply with the applicable portions of the National Electrical Code and/or other local electrical codes.

Plumbing connections must comply with applicable sanitary, safety and plumbing codes. Drain and fill line configurations vary, some methods are shown on this drawing.

**MODELS:
LX_eC
00-947871
REV C**

LXe HOT AND COLD

HOBART

701 S Ridge Avenue, Troy, OH 45374
1-888-4HOBART • www.hobartcorp.com

SPECIFICATIONS

DESIGN: Front opening, equipped for installation in either freestanding or undercounter-type operations.

CONSTRUCTION: 300 series stainless steel tank, door and top panel.

PUMP: Centrifugal-type, integral with motor, horizontally mounted. Pump capacity 38 gpm.

MOTOR: Single phase, furnished for all electrical specifications. Factory sealed lubrication. Inherent overload protection with auto reset.

WASH AND RINSE CYCLE: Complete automatic type, controlled by solid-state electronics. Cycle may be interrupted any time by opening door. Cycle continues when door is closed.

- Initial cycle fills wash tank, to be recirculated each wash cycle. Some wash water is drained off before rinse cycle. Rinse cycle refreshes wash water and tank heat.

RINSE PUMP: Powered by a single phase motor, the rinse pump is made of high strength engineered composite material.

RINSE AND SANITATION:

- **LXeH:** Sanitation is accomplished by means of a built-in booster heater designed to raise temperature of water to a minimum of 180°F from an incoming water temperature of 110°F.

- **LXeC:** Sanitation is accomplished by injection of proper amount of sodium hypochlorite solution (liquid bleach) into final rinse water to achieve a minimum of 50PPM sanitizing solution. Injection of sodium hypochlorite is accomplished by a built-in sanitizing chemical pump.

PUMPED DRAIN: Machine automatically drains water through a built-in pump. Maximum 38" drain height permitted.

RACKING: Machines accommodate racks from 10" x 20" to 20" x 20". Also accepts 16" x 18" cafeteria trays.

NOTE: Certain materials, including silver, aluminum and pewter are attacked by Sodium Hypochlorite solution in the chemical sanitizing mode of operation.

SPECIFICATIONS: Listed by Underwriters Laboratories Inc. and NSF International.

MACHINE RATINGS	LXeC	LXeH
Racks per Hour Rate	34	32
Dishes per Hour (25 per Rack Avg.)	850	800
Glasses per Hour (36 per Rack Avg.)	1224	1152
Controls	Microcomputer	
Tank Capacity - Gallons	2.9	
Overall Dimensions - H x W x D	32½" x 23 ¹⁵ / ₁₆ " x 25 ⁹ / ₁₆ "	
Cycle Time - Seconds	105	109
Tank Heat	1.8 KW	
Electric Booster Heater	N/A	4.9 KW
Water Usage Per Rack - Gallons	.74	
Drain Design	Pumped	
Door Opening Height	17"	
Detergent Pump	Standard	
Rinse-Aid Pump	Standard	
Sanitizer Pump	Standard	N/A
Chemical Prime (auto prime)	Standard	
Peak Drain Flow - GPM	4.0	
Service Diagnostics	Standard	
70° Rise Sense-A-Temp™ Booster Heater	N/A	Standard
Incoming Water Temperature Required (minimum)	120°	110°

As continued product improvement is a policy of Hobart, specifications are subject to change without notice.



24350 SR 23 South
South Bend, IN 46614

QUOTATION

Quote Number: 22555
Quote Date: Apr 18, 2016
Page: 1

Voice: 574-233-4500
Fax: 574-288-4550
Email: sales@derbyindustries.com
Website: www.derbyindustries.com

Our Tax ID Number is:
35-1348756

Quoted To:
Columbus Love Chapel Columbus, IN

Ship to:
Columbus Love Chapel Attn: Kim Harris Columbus, IN

Customer ID	Good Thru	Payment Terms	Sales Rep
Columbus Love Chapel	6/18/16	Net30w/approval, Visa, MC, AE	KENNY

Email: ken@derbyindustries.com

We are pleased to quote the following Product

Shipped FEDXGRD.
Tracking information emailed upon shipment to assist on actual delivery day if email address was provided.

Quantity	Item	Description	Unit Price	Amount
6.00	DFLAT <i>12</i>	(dozen)DERBY FLAT SHEETS - WHITE MUSLIN 54"X90"	48.65	291.90
6.00	DFIT <i>12</i>	(dozen)DERBY FITTED SHEETS	54.76	328.56
72.00	CTB	Derby Cotton Thermal Blanket	11.08	797.76
1.00	FREIGHT	add blankets	155.30	155.30

Return Policy: Derby Industries must be notified prior to receipt of any returned items. Once it is verified that the returned product is in the same condition in which it was shipped (new, unused, and in original packaging) a credit will be issued minus: 1) a 25% restocking fee and 2) the cost of freight of the original shipment and the return shipment. NOTE: ALL SALES ARE FINAL ON CUSTOM PRODUCTS.

To place order sign below, date, include PO# if required. Return to Fax#574.288.4550

Subtotal	1,573.52
Sales Tax	
TOTAL	1,573.52

PO#: _____ Exemption #: _____ Date: _____

Submit Exemption/Resale Certificate with order.
Thank you.