



Mary Harvey, District Governor 2022-2023



This is our fifth and final newsletter in the series with highlighting the Rotary Foundation and the Rotary Areas of Focus.

### TRAINING DATES: REGISTRATION REQUIRED

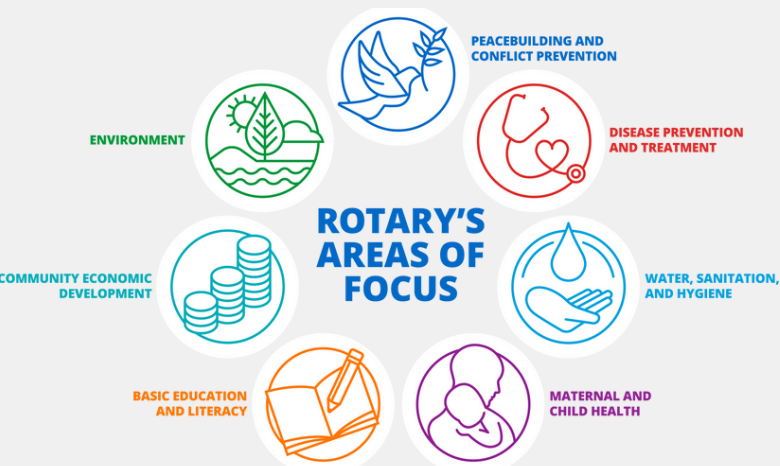
**FEBRUARY 19, 2022** PRESIDENTS ELECT TRAINING (PETS) ORIENTATION DOUBLETREE BY HILTON, MOUNT VERNON

*HYBRID OPTION NOW AVAILABLE FEBRUARY 19 IF YOU ARE CONCERNED ABOUT CLOSE CONTACT.  
WATCH EMAIL FOR HOW TO UPDATE REGISTRATION INFORMATION TO RECEIVE LOGIN LINK.*

**MARCH 18-20, 2022** LAND OF LINCOLN PRESIDENTS ELECT TRAINING (LOLPETS) (DISTRICTS 6490, 6510, 6560, 6580)  
HOLIDAY INN, EFFINGHAM

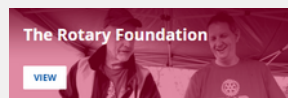
**APRIL 9, 2022** DISTRICT ASSEMBLY  
DOUBLETREE BY HILTON, MOUNT VERNON

ONE OF YOUR GOALS WILL BE TO SET A FOUNDATION  
GIVING GOAL FOR YOUR CLUB IN ROTARY CLUB CENTRAL.  
THIS SHOULD BE DONE BEFORE MARCH 18, 2022. THINK  
ABOUT THE ROTARY AREAS OF FOCUS AND WHICH AREAS  
YOU MAY WANT TO FOCUS ON FOR SERVICE AND/OR  
PROJECTS IN YOUR YEAR AS CLUB PRESIDENT.



There are of course, numerous other great modules that will assist you in learning about the Rotary Foundation, all of which can be viewed at your own pace. However, we do hope you will be able to complete viewing of Rotary Foundation Basics before we see you at PETS Orientation.

You will find great information in the Learning Center within The Rotary Foundation module.



### MyRotary, the Learning Center

Go to The Learning Center and explore the courses available to you on being a Club President and the various other club leadership roles.

Create an Account on MyRotary at the link below (<https://my.rotary.org/en/>)

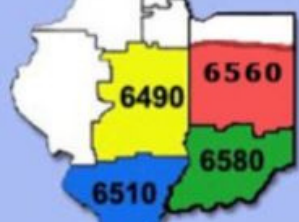
- gain access to the latest reports, information and tools. Your account lets you do Rotary business quickly and efficiently and ensures that Rotary International has accurate records for your club.
- enter goals and track progress, record service projects and Foundation goals
- Access the Learning Center ([How to Access the Learning Center](#))
  - learn at your pace and convenience
  - choose Course Catalog > The Rotary Foundation to open your club up to a variety of resources to include:
    - Rotary Foundation Basics
    - Rotary Areas of Focus
    - Fundraising Basics



IMAGINE  
ROTARY

Looking forward to seeing you on February 19th in Mount Vernon and again in Effingham on March 18-20th!

[LOLPETS.ORG](http://LOLPETS.ORG)



# Land of Lincoln PETS



Rotary Districts 6490, 6510, 6560 and 6580

Registration Information can be found [HERE](#) for Land of Lincoln Presidents Elect Training Seminar  
Thelma Keller Conference Center Effingham, IL  
March 19-20, 2022

## Hotel Information

Hotel Block - Please call the Hotel's direct line to lock in your room and RATE.

Be sure to ask for the "LLP", "Land of Lincoln PETS" discount rate.

### Holiday Inn Effingham

1301 Avenue of Mid America, Effingham Illinois, USA 62401

Tel: 217-540-7777

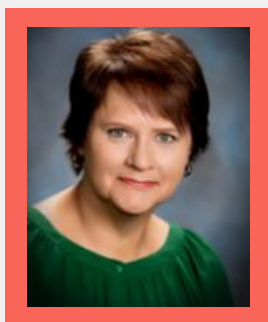
Rate: \$119.00 plus taxes (connected to the Conference Center)

### Country Inn & Suites

1200 North Raney, Effingham, Illinois, USA 62401

Tel: 217-540-5555

Rate: \$95 plus taxes (next door to the Holiday Inn)  
Includes complimentary breakfast



District Governor, 2022-2023

**Mary Harvey**

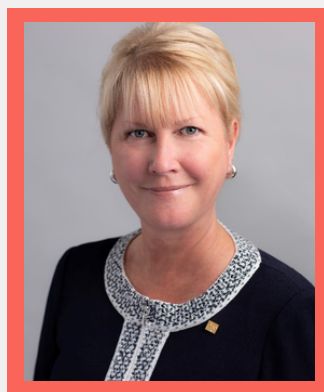
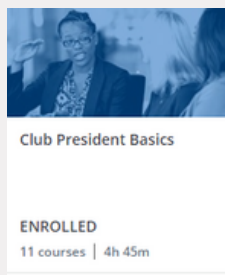
Rotary Club of Mt. Vernon

Mary joined the Mount Vernon Rotary Club in 2011 and has served in multiple capacities including Club President, Club Secretary, Club Membership Chair, and Board Director. Mary is a Facilitator with Rotary Leadership Institute, a member of the Paul Harris Society, a Level 3 Major Donor to The Rotary Foundation and was chosen Rotarian of the Year in District 6510 for Rotary year 2018-2019. As a consultant for small business management and human resources for 30+ years, Mary has worked within a variety of industries including healthcare, construction, and manufacturing with an emphasis on employment law. She joined her husband, Lane, in his law practice in 2010 serving as the firm's financial director. Mary is originally from Northeast Wisconsin (Go Packers!) where she raised her family who still reside in Green Bay, Wisconsin. She met her husband, PDG Lane Harvey in Chicago Illinois and Attorney Harvey was able to use his powers of persuasion to lure her to Southern Illinois in 1999. When not visiting with clubs around District 6510 as the District Membership Chair, she enjoys traveling, visiting her 12 grandchildren, handbell ringing, and floral design. She loves her family, her beautiful blue-eyed husky Beau, Riesling wine, Door County Wisconsin, football and Rotary.



Have you completed your learning center courses?  
We will have a drawing on 2/19 for the Presidents-Elect who have completed their 11 Learning Center Courses under "Club President Basics". Invest 4-5 hours on preparing for your year as President. You won't regret it.

Must be present on-site or online to win!



Rotary International President  
2022-2023

**Jennifer Jones**  
Keynote speaker at  
LOLPETS



**IMAGINE  
ROTARY**