



Rotary Club of Southeast Tulsa
Board of Directors
2017-2018



MINUTES

Wednesday August 16, 2017

2017-2018 Board :

	Present	Absent
Kevin Graefe, Elect.....	X	
Joe McCormick, President-Elect.....	X	
Scott Burmeister, Past-President.....		X
Tom Hansen, Secretary.....	X	
Bob Nash, Treasurer.....	X	
John Brophy, Club Service.....	X	
Steve Curley, Club Service.....	X	
Marty Roberson, Club Membership.....		X
Danny Mitchell, Youth Services – Visioning.....		X
Charles Crain, Director at Large.....	X	
Jack Wimbish, SOA.....	X	

Rotary Club of Southeast Tulsa Foundation Board

With eight of the eleven Board members present a quorum was established. Attending members and visitors are shown above. The **Rotary Club of Southeast Tulsa Foundation Board** meeting was called to order by President Kevin Graefe at 11:45 am CDT at the District 6110 Office, 8209 East 63rd Pl., Tulsa.

Secretary’s Report - Tom

- The July 12, 2017 Foundation minutes were moved and voted approved.

Treasurer’s Report – Bob

- The July 31, 2017 Foundation Balance Sheet and Profit & Loss Sheet (attached) were moved and voted approved.

Adjourn

President Kevin adjourned the Club Foundation Board meeting at 11:55 am CDT.

Southeast Tulsa Rotary Foundation Balance Sheet Standard

08/14/17

As of July 31, 2017

	Jul 31, '17
ASSETS	
Current Assets	
Checking/Savings	
2001.01 — Cash in Bank	
2010 — Checking	
2010.01 — Cash in Bank	16,434.78
Total 2010 — Checking	16,434.78
2001.01 — Cash in Bank - Other	(14,431.59)
Total 2001.01 — Cash in Bank	2,003.19
Total Checking/Savings	2,003.19
Accounts Receivable	
2300 — Accounts Receivable	
2300.01 — Accounts Receivable - Club E...	(710.79)
2300.02 — Accounts Receivable - Club	(239.21)
2300 — Accounts Receivable - Other	950.00
Total 2300 — Accounts Receivable	0.00
Total Accounts Receivable	0.00
Other Current Assets	
2100 — Investments	
2110 — Mutual Funds - Cost	
2110.01 — Mutual Fnd - Cost -Unrestric...	31,855.19
2110.02 — Mutual Fnd - Cost -B. Moore...	10,000.00
Total 2110 — Mutual Funds - Cost	41,855.19
2190 — Cumulative Unreal Gain (Loss)	
2190.01 — Mutual Fd-Unreal G/(L) Unre...	9,044.67
2190.02 — Mut Fd-Unreal G/(L) B Moor...	12,376.00
Total 2190 — Cumulative Unreal Gain (L...	21,420.67
Total 2100 — Investments	63,275.86
Total Other Current Assets	63,275.86
Total Current Assets	65,279.05
TOTAL ASSETS	65,279.05
LIABILITIES & EQUITY	

Southeast Tulsa Rotary Foundation
Balance Sheet Standard

08/14/17

As of July 31, 2017

	<u>Jul 31, '17</u>
Equity	
5400 — Net Assets	
5410 — Unrestricted Net Assets	
5410.01 — Unrestricted - Undesignated	80,727.90
Total 5410 — Unrestricted Net Assets	80,727.90
5400 — Net Assets - Other	(4,355.00)
Total 5400 — Net Assets	76,372.90
5500 — Change in Net Assets	(11,804.17)
Net Income	710.32
Total Equity	<u>65,279.05</u>
TOTAL LIABILITIES & EQUITY	<u><u>65,279.05</u></u>

Southeast Tulsa Rotary Foundation Profit and Loss Standard

08/14/17

July 2017

	Jul '17
Ordinary Income/Expense	
Income	
6000 — Unrestricted Revenue & Support	
6100 — Unrestrictive Income	
6100.07 — Contribution-Mullen	59.00
	59.00
Total 6100 — Unrestrictive Income	59.00
6200 — Fundraising Income	
6200.01 — Card Draw Income	89.00
6200.02 — Fines	81.00
	170.00
Total 6200 — Fundraising Income	170.00
6800 — Investment Income (Loss)	
6800.10 — Unrealized Gain (Loss)	1,481.32
	1,481.32
Total 6800 — Investment Income (Loss)	1,481.32
Total 6000 — Unrestricted Revenue & S...	1,710.32
Total Income	1,710.32
Gross Profit	1,710.32
Expense	
7000 — Unrestricted Expenses	
7200 — Project Expenses	
7200.01 — Four Way Test & Essay	1,000.00
	1,000.00
Total 7200 — Project Expenses	1,000.00
Total 7000 — Unrestricted Expenses	1,000.00
Total Expense	1,000.00
Net Ordinary Income	710.32
Net Income	710.32



Rotary Club of Southeast Tulsa Board of Directors

2017-2018



MINUTES

Wednesday August 16, 2017

Tulsa Southeast Rotary Club Board

With eight of the eleven Board members present a quorum was established. Attending members are shown above. The **Southeast Rotary Club Board** meeting was called to order by President Kevin Graefe at 11:55 am CDT at the District 6110 Office, 8209 East 63rd Pl., Tulsa.

Secretary's Report - Tom

- The July 12, 2017 Club minutes were moved and voted approved.
- July attendance was submitted at 86.5% which as of this meeting is #5 in Dist. 6110
- DACdb member changes this month include termination of Paul Miller (transfer to Jenks), termination of Jennie Bernbaum (deceased) and member type change for Grover Bauer from Active-LOA to Active-R85. Currently there are 24 Active-R85, 20 Active, and 6 Honorary members for a total of 50 Active/Honorary members.

Treasurer's Report – Bob

- The July 31, 2017 Club Balance Sheet and Profit & Loss Sheet (attached) were moved and voted approved.

New Business

- Paul Miller, Reece Morrel and Melisa Owens were recommended to the Jenks Club as members in good standing from SE Tulsa. Mr. Miller was terminated from SETR on 8/3/2017 pending his moved to Jenks (Ms. Owens – 10/18/2016 and Mr. Morrel – 6/30/2017 were terminated earlier).
- Continuing membership process for James Hiatt (past local Rotarian).
- Discussed the possibly of membership for Kulsum Siddiqui (active, honorary, other). Members will consider this possibility and the most appropriate level of membership.
- Mr. Brophy has agreed to take on the speaker gift (library books) process to resume honoring our speakers with a donation to the RC Elementary School Library. He will look at restocking our inventory (which is to be stored with our meeting supplies at Ti Amos) and get new book plates for the speakers to sign.



Rotary Club of Southeast Tulsa Board of Directors

2017-2018



- The Roy Clark readers' program lead by Mr. Zenthoefer is about ready to begin. Members and family members are to be encouraged to look at volunteering a couple of hours a week to read to the students at Roy Clark.
- Our next MSNI work day is scheduled for September 9th.
- It was moved and approved to become an Executive Sponsor Level donor to Little Light House's Laps-4-Little Ones event. Club members will be asked to donate at regular Club meetings and the Club Foundation will make up anything short of the \$1000 donation. Mr. Wimbish is planning to run on the September 16th event.
- Roy Clark's back-2-school event from 5:00 – 7:30 pm on Thursday September 14th will be this year's Fit-Fest for our Club. We will be doing the Presidential Fitness Testing, running the inflatables and providing the DJ for music as we have done in the past. We will also work with school personnel on other events and activities they have arranged. Proceeds are to go to fitness and playground equipment and the school clinic. It was also discussed having a raffle for a big screen TV to be given away as another source of revenue.
- A discussion was held on how to best manage the James (Jim) Locker TU Scholarship. Meetings will be set up with TU Administration (President) to see how and who needs to be involved in management of this gift while preserving Jim's intended desires.
- A discussion on how to dispose on the remaining Claret House (now closed) and Ti Amos gift cards the Club now has. Ti Amos will continue to honor the Claret cards until October 31st. It has been suggested to give cards (Claret first) to members bringing potential member guests to our regular meetings. Mr. Nash will get an inventory of cards on hand for our next Board meeting.

Adjourn

The next meeting date and location of the Board will be September 13, 2017 and will be at the District 6110 Office, 8209 East 63rd Pl., Tulsa.

President Kevin adjourned the Club Board meeting at 1:16 pm CDT.

08/14/17

Rotary Club of Southeast Tulsa Balance Sheet Standard

As of July 31, 2017

	Jul 31, '17
ASSETS	
Current Assets	
Checking/Savings	
2000 — Cash and Bank Accounts	
2010.01 — Arvest - Checking	11,327.66
2010.02 — Arvest - Money Market	5,004.34
2010.03 — Cash on Hand	100.00
Total 2000 — Cash and Bank Accou...	16,432.00
Total Checking/Savings	16,432.00
Accounts Receivable	
2300 — Accounts Receivable	
2310.01 — Member Receivables	5,812.00
Total 2300 — Accounts Receivable	5,812.00
Total Accounts Receivable	5,812.00
Other Current Assets	
2900 — Undeposited Funds	1,768.00
Total Other Current Assets	1,768.00
Total Current Assets	24,012.00
Fixed Assets	
3200 — Property and Equipment	
3210.01 — Audio Equipment	1,049.36
Total 3200 — Property and Equipment	1,049.36
Total Fixed Assets	1,049.36
TOTAL ASSETS	25,061.36
LIABILITIES & EQUITY	
Liabilities	
Current Liabilities	
Other Current Liabilities	
4100 — Current Liabilities	
4110.01 — Every Rotarian Every ...	1,996.00
4110.05 — Deferred Dues	844.00
Total 4100 — Current Liabilities	2,840.00

08/14/17

Rotary Club of Southeast Tulsa Balance Sheet Standard

As of July 31, 2017

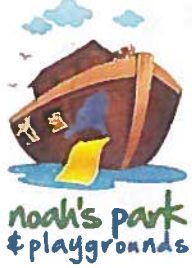
	<u>Jul 31, '17</u>
Total Other Current Liabilities	<u>2,840.00</u>
Total Current Liabilities	<u>2,840.00</u>
Total Liabilities	2,840.00
Equity	
5400 — Net Assets	
5410 — Unrestricted Net Assets	
5410.01 — Unrestricted - Undesig...	<u>6,246.24</u>
Total 5410 — Unrestricted Net Assets	<u>6,246.24</u>
Total 5400 — Net Assets	6,246.24
5500 — Unrestricted Net Assets	5,670.57
Net Income	<u>10,304.55</u>
Total Equity	<u>22,221.36</u>
TOTAL LIABILITIES & EQUITY	<u>25,061.36</u>

Rotary Club of Southeast Tulsa Profit and Loss Standard

08/14/17

July 2017

	Jul '17
Income	
6000 — Unrestricted Support & Revenue	
6300 — Dues and Fees	
6300.01 — Membership Dues	11,394.00
6300.02 — Meals - Paid at Door	103.00
6300.03 — District Dues	1,440.00
6300.04 — Rotary International Dues	1,714.00
6300.07 — Change of Horses	1,260.00
6300.08 — Other Income	374.00
Total 6300 — Dues and Fees	16,285.00
6800 — Investment Income (Loss)	
6800.01 — Interest Income	0.83
Total 6800 — Investment Income (Loss)	0.83
Total 6000 — Unrestricted Support & Re...	16,285.83
Total Income	16,285.83
Gross Profit	16,285.83
Expense	
7000 — Unrestricted Expenses	
7200 — Program Expenses	
7200.01 — Meals - Food & Facility	1,560.72
7200.02 — Dues - District	1,730.50
7200.03 — Dues - International	1,861.80
7200.04 — Change of Horses Event	544.47
Total 7200 — Program Expenses	5,697.49
7900 — Administrative Expenses	
7900.02 — Website Maintenance	282.25
7900.11 — BK or CC Fees	1.54
7900 — Administrative Expenses - Other	0.00
Total 7900 — Administrative Expenses	283.79
Total 7000 — Unrestricted Expenses	5,981.28
Total Expense	5,981.28
Net Income	10,304.55



4 simple steps to place your order:

- 1st Browse
- 2nd Quote
- 3rd Review
- 4th Buy

Products

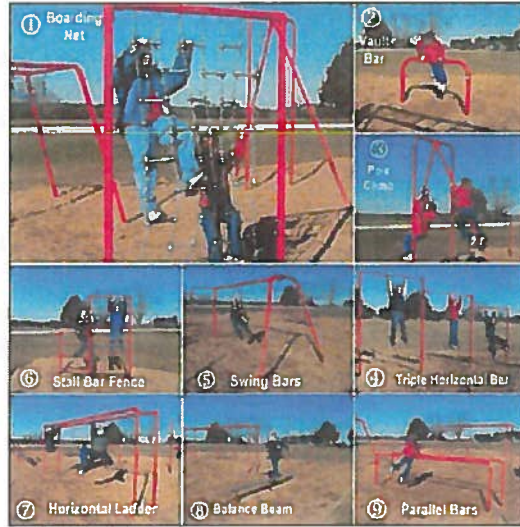
- ADA Equipment
- Borders & Ramps
- Playground Packages
- Early Childhood
- Playground Equipment
- Park Equipment
- Outdoor Fitness Equipment
- Quick Ship
- Safely Surfacing
- Shade Structures
- Sports Equipment
- Free Shipping Specials

Live Chat

ADA Ramps



School Exercise Course



Pin It

RRP: \$6,505.00

Your Price: \$6,180.00

(You save \$325.00)

SKU: 511-206P

Brand: Sportsplay

Availability: ships in 4-6 weeks

* SP Metal Colors:

Red

Quantity: 1

Add to Cart

Finance for as low as \$143.99 / month

- Future Discounts
- Product Updates
- Tips-News-Info

Your First Name:

Your Email Address:

Subscribe

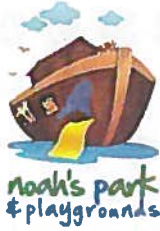
- Description
- Warranty
- Other Details
- Tags
- Similar Products
- Also Viewed

Sportsplay School Exercise courses are ideal for elementary and middle schools, and even neighborhood outdoor fitness trails, apartments, and more. The 9-Unit School Exercise course is designed to keep your older students or kids outdoors and exercising! It's a great way to have fun and fight childhood obesity at the same time.

The 9-Unit Exercise course (all metal) comes with:

1. Boarding Net
2. Vault Bar
3. Pole Climb
4. Triple Horizontal Bar
5. Swing Rung Bar(s)
6. Stall Bar Fence
7. Horizontal Ladder (Jr. Horizontal Ladder or Challenge Ladder can be substituted)
8. Balance Beam (aluminum)
9. Chain Ring Ladder

Powered by



4 simple steps to place your order:

1-877-248-5444

- 1st Browse
- 2nd Quote
- 3rd Review
- 4th Buy

Search by Brand, Category, or Product

Products

- ADA Equipment
- Borders & Ramps
- Playground Packages
- Early Childhood
- Playground Equipment
- Park Equipment
- Outdoor Fitness Equipmen
- Quick Ship
- Safety Surfacing
- Shade Structures
- Sports Equipment
- Free Shipping Specials

Live Chat

ADA Ramps



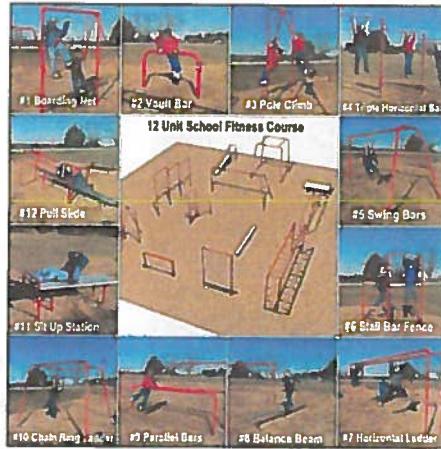
- Future Discounts
- Product Updates
- Tips-News-Info

Your First Name:

Your Email Address:

Subscribe

School Fitness Equipment 12-pc



Pin it

RRP: \$10,042.00

Your Price: \$9,540.00

(You save \$502.00)

SKU: 511-215P

Brand: Sportsplay

Availability: ships in 4-6 weeks

* SP Metal Colors:

Red

Quantity: 1

Add to Cart

Finance for as low as \$222.28 / month

- Description
- Other Details
- Tags
- Similar Products
- Also Viewed

Sportsplay Outdoor Fitness courses are ideal for elementary and middle schools, neighborhood outdoor fitness trails, apartments, and more. The 12-Unit Fitness course is designed to keep your older students or kids outdoors and exercising! It's a great way to have fun and fight childhood obesity at the same time.

The 12-Unit Fitness course (all metal) comes with

1. Boarding Net
2. Vault Bar
3. Pole Climb
4. Triple Horizontal Bar
5. Swing Rung Bar(s)
6. Stall Bar Fence
7. Horizontal Ladder (Jr. Horizontal Ladder or Challenge Ladder can be substituted)
8. Balance Beam (aluminum)
9. Parellel Bars
10. Chain Ring Ladder
11. Sit-up Station
12. Pull-Slide Station

Powered by VWR



WRITE A REVIEW