



CREATE HOPE NEWSLETTER

Valerie Sorensen, District Governor 2023-2024

ANNUAL FUND MATCHING PROGRAM 2023-2024

Starting October 15, 2023 through January 15, 2024, your donations to the Annual Programs Fund will be matched with Recognition Points!

With a focus on helping all District 6060 Rotarians reach their first Paul Harris Fellowship (PHF) level, **we will be matching 2 points for each dollar, for any donors that have not reached their first PHF.** All donations \$50 to \$500 will be matched for these not yet PHF members.

All other Rotarians that have reached PHF will have donations from \$100 to \$500 **matched at .5 points for every \$1.** Make a minimum donation of \$100 up to \$500 to the Annual Programs Fund via check or directly to the Foundation on MyRotary.org and you will receive a matching contribution from Rotarians who have donated their points to support you.

At this moment, we plan to have 40,000 donated points to share with members not yet reaching their first PHF and another 15,000 for others! Any unused points from either group may be redistributed in January to further incentivize our annual giving.

All checks must be sent to Brian for proper processing to get this matching credit.

Please contact **Brian Kohlberg** with any questions about your donation or club collections.

Brian Kohlberg, Rotary District 6060, Foundation Chairperson

EMAIL: bmkohlberg@yahoo.com

CELL PHONE: (314) 852-2053

CHECKS PAYABLE TO: THE ROTARY FOUNDATION

MAILING ADDRESS: District Foundation, P.O. Box 425, Valley Park, MO 63088

Note: If you currently participate in Direct Deposit donations, you need to send Brian a copy of your RI Direct receipt to receive the matching points.

If you make an online donation a receipt must be sent to Brian with a request for matching points.

If you would like to donate points, please contact Brian Kohlberg, Rotary District 6060 Foundation Chairperson 2023-2026 without delay!

WHAT'S INSIDE THIS ISSUE:

- Matching Points Program
- District Assembly:
 - Oct 20 & Oct 27
- Club Visioning Team
- New Ways to Expand
- Shoe Drive How-To
- Shoe Success Story
- World Polio Day - Oct 24
- Hunger Drive Continues
- Belize Children's Project
- Growing Membership
- Casino Night STC
- Shoe Tally



2 REGIONAL DISTRICT ASSEMBLIES OCT 20 & OCT 27

THE SOUTHERN ASSEMBLY WILL BE IN SIKESTON
AT THE SIKESTON COUNTRY CLUB,
OCTOBER 20 FROM 10:00 A.M. - 3 P.M.



REGISTER HERE



THE NORTHERN ASSEMBLY
WILL BE HELD IN WENTZVILLE
AT THE PITMAN RECEPTION CENTER,
OCTOBER 27 FROM 10 A.M. - 3 P.M.



REGISTER HERE



Attend either or both sessions.
Each one covering the same topics!

Your \$25 Registration will include lunch.



Each assembly will have rotating round table discussions on various aspects of **club membership**, including recruiting, retaining members, engagement of members, diversity, inclusion, belonging, equity, and the **Rotary Foundation**. During these discussions you will be able to **share ideas** with other Rotarians in our Rotary District 6060.

Rotary Foundation awards and recognitions will also be presented at the assemblies.

JOIN THE CLUB VISIONING TEAM

What: Training for the Club Visioning Team

When: Saturday, November 11, 10:00 – 3:00

Where: Church of the Shepherd, 1601 Woodstone Drive, St. Charles, MO 63304

Why: This opportunity is for YOU, if you

- want to learn how the Club Visioning process takes clubs from good to great.
- want to explore a role in Rotary beyond just serving in your club.
- want to utilize or develop skills in facilitation and strategic planning.

Questions? Need more information?

Contact Sue Cobb, 636-284-4686, rotarysuecobb@gmail.com to RSVP.



NEW WAYS TO EXPAND OUR REACH

• Service companion club grows membership by Alex Johnson, Rotary Club of Plano West, Texas, USA and Rotary Coordinator Zone 25B & 29

Service companion club grows membership

Posted on August 22, 2023

As I stepped into my role as president of the Plano West Rotary Club on a scorching summer day in 2020, I was faced with a daunting challenge. The club had been steadily losing members for a decade and had only 21 left. What's more, the COVID-19 pandemic had forced us into lockdown, rendering most plans and strategies useless. But I wasn't one to back down, I had a vision for turning things around.

I felt the best way to gain more members was to focus on service. We used Rotary's Action Plan to create a plan of attack and get members involved in satisfying service. We organized multiple small but meaningful service projects each month, and every month we increased our impact. We kept asking people to lend a hand so we could expand our reach. In this manner, we increased our ability to adapt.

Through this method we accomplished 81 projects in a single year. Four new members were inducted every month. By enhancing participant engagement, we turned volunteers into a part of Rotary and kept helping our community.

Companion club model

We also created a new service-focused club model that was designed to allow people to join us in making a difference in our community without the obligation of weekly meetings and high dues. This model was appealing to certain members of our club, and so we made it a companion club that is part of our membership but separate, much like a satellite club.

A service-based companion club model tripled membership within a year.

It's been an amazing transformation. Within the first year, the club tripled its membership to 63. Even more exciting, women became a majority, and we grew more racially diverse. Our median age also decreased by 17 years.

To replicate this success, I have a team of 20 volunteers who are helping 23 districts from Canada to Texas form more of these service-based companion clubs. We've found success in this model because it takes fewer members to start, they already know Rotary, and the satellite grows quickly because of the support it gets from the sponsor club. It's an exciting opportunity for new members to engage in meaningful work and contribute their skills and talents to create positive change in their communities. Together, we focus on projects driven by local needs.

We also found success in using different methods to reach people with our message. We started by inviting people to events via email and social media. This allowed prospective members to get a feel for our club before ever attending a meeting. Our events were designed to get attendees actively involved in our service projects from the start. This level of engagement is critical to capturing their interest and building a sense of community. Additionally, we got our message and invitation out through promotional materials at local businesses and through word-of-mouth.

It is vital to have a strong message and clear objectives. These enable you to attract individuals who are eager to join the effort and contribute to positive change. Service-based clubs work – whether they're a companion club or standalone – because they allow members to come together, take action, and create impact!



Rotary members Fred Bemenderfer and James Thomas help volunteer and school secretary Sandra Pugh deliver boxes of meals to families in need at a local elementary school.



Finding People to Invite: A Prospective Member Exercise — Try these strategies to attract qualified members for your club.

DISTRICT 6060 SHOE DRIVE “MAKING LARGE STRIDES!”

With **40+%** of the **District Governor Club Visits** **completed**, clubs need to know how to pack the rest of their shoes for delivery to the Funvention in April.

1. Remove all packaging and individual boxes.
2. Place pair of shoes sole to sole and heel to toe.
3. Rubber band or tie shoe laces together.



4. Pack as many pairs as possible together in a box.
5. **Store until the Funvention.**
6. Bring boxes to the tractor trailer at Osage Beach **April 19-20, 2024**, for the Funvention.



There was an old woman who sought to buy shoes,
She shopped with her husband, they went in twos.

And what do you know,
18 shoes in a row,
Only \$20 and shoes in many hues!

YIPPEE! What a great day.
One pair from **Shoe Sensation** (the lowest price was \$7 but very colorful), **four pairs donated AGAIN** from **Outdoor Gear** (the manager had our Rotary Club thank you letter for the previous five pairs of shoes near the register), and a discount on 13 pairs at **WalMart** down to \$5 each or less plus a \$50 donation to pay for them (we paid the difference plus taxes of \$12).

WOWZA!
Susan and Gregor Jittlov
(Rotary Club of Sullivan)



2ND ANNUAL HUNGER DRIVE - KEEP THE FOOD FLOWING!

Hunger is a major issue everywhere in the world. In Missouri, 715,170 people face hunger with 177,320 being children. **September is designated as Hunger Action Month by Feeding America** to inspire people to act and raise awareness of hunger in the United States. **As a district we can make a huge impact on those facing food insecurity throughout 3 state food bank zones (Central Missouri Food Bank, St Louis Food Bank, and Southeast Missouri Food Bank).** September 15th is Hunger Action Day and that is when we will begin our 2nd Annual Hunger Drive.

To raise awareness, each club should wear orange and post a photo with #HungerActionDay.

For the competition **each club will create projects** to provide meals to Missourians such as:

- Serve meals at a food kitchen
- Pack/deliver food at a food bank, for a backpack program or senior boxes
- Pack or deliver food in concert with another organization (i.e., Meals on Wheels)
- Provide funds, where appropriate, to collaborate with another local or regional food distributing organization
- Host a virtual food drive with your local food bank
 - Southeast Missouri Food Bank - <https://semofoodbank.fenly.org/>
 - Central Missouri Food Bank - <https://interland3.donorperfect.net/weblink/weblink.aspx?name=E164454&id=127>
 - St Louis Food Bank - <https://stlfoodbank.blackbaud-sites.com/>
- Host a food drive
 - Each food bank can provide collection barrels or boxes if needed
 - Each club will get with their respective food bank to schedule delivery or to schedule pick up by food bank personnel

Clubs will be awarded “meal points” for volunteer hours, food donations, and dollars donated during the competition period (**September 15 - October 31**). On 1 November, meal points will be calculated and the club with the most points will receive a gift from the District Governor. So, what counts as a meal?

\$1.00 = 4 meals

1.2 pounds of food donated = 1 meal

1 volunteer hour = 10 meals

Our goal as a District is to provide 200,000 meals for Missourians facing hunger. Use this link (<https://forms.gle/r4VKvBEXBrGw4Rxh7>) to log the estimated meals provided during the annual hunger drive. The data provided will help track our progress. **Please share photos of your service projects with district6060.ham@gmail.com.**

It is incumbent on each club to track their volunteer activity through the portal established at Rotary Club Central using the word “Hunger” in the title of the project, where the 4-Way Test will act as a guide upon which reporting is based. **Also, remember to share your success on Rotary Showcase.**

TOGETHER, WE SEE A WORLD
WHERE PEOPLE UNITE AND TAKE ACTION
TO CREATE LASTING
CHANGE ACROSS THE GLOBE,
IN OUR COMMUNITIES, AND IN OURSELVES.





Belize Children's Project

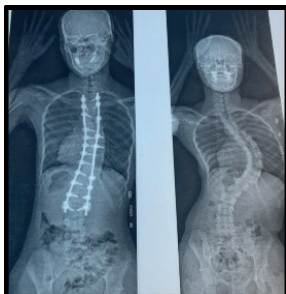
Rotary
Club of Belmopan



Rotary
District 6510

News & Needs October 2023

NEWS:



What a difference Shriner's skilled spine surgeons make!!
Rihanna M. now has a safely corrected spine that previously had a 74* curve.

She is recuperating well. We are planning to get her
and her Grandmother, Grace, back to Belize by the end of October.

They will be staying at Ronald Mc Donald House on West Pine
during her recovery. If Any Rotarian would like to help with

Grocery runs or drives to take in the Fall foliage,
contact one of the Care Coordinators below to arrange an outing.

NEEDS:

Calling People of Action!

- We have families in the Ronald McDonald Houses in the downtown St. Louis area that do not have transportation. They receive one cab ride per week to the grocery store from Ronald McDonald House.
- Families really enjoy an outing or perhaps a ride to church or something as simple as a visit.

In the past, District 6060 has helped with transportation to the Kirkwood YMCA for aqua therapy or to take or pick up a child and their accompanying family member to or from the hospital, when both of our care coordinators from Illinois were committed and the Moolah Van was not available.

We really need volunteers when we have families here for 4-6 months, which we will have the end of January. These patients typically have physical therapy 3 times per week. We utilize the Moolah van however it is not always available.

These kids really need our boots on the ground. If you can help, contact the Care Coordinators.

Thank you for your continued support.

For more information on how you can help please contact us.

Care Coordinators Christine Lashley 618-691-9523 and
Charlene Brennan 618-691-9120, or BCP Chair, Tim Gutknecht 618-281-7626

GROWING MEMBERSHIP THROUGH FELLOWSHIP

The **District 6060 Golf Fellowship**
had a 2-person scramble in August
at Missouri Bluffs.
Fun was had by all.





SHOE TALLY AS OF SEPT 30, 2023

Top 3 Shoe Collectors (so far)

- Arnold
- Cottleville/Weldon Spring
- Spirit of St. Louis County



[DISTRICT
CALENDAR LINK](#)

| Club Name | Club Totals | Per Capita | Cash |
|---------------------------|-------------|------------|-------|
| Arnold | 2196 | 47.73 | |
| Bowling Green | 62 | 1.94 | |
| Cape Girardeau | 104 | 1.65 | |
| Cape Girardeau County | 0 | 0 | |
| Cape Girardeau West | 11 | 0.21 | |
| Clayton-Ladue | 0 | 0 | |
| Cottleville/Weldon Spring | 2114 | 124.35 | \$90 |
| Crestwood-Sunset Hills | 0 | 0 | |
| De Soto | 276 | 18.4 | |
| Dexter | 15 | .78 | |
| Festus-Crystal City | 0 | 0 | |
| Florissant | 0 | 0 | |
| Fredericktown | 8 | 0.53 | |
| Hannibal | 17 | 0.29 | \$350 |
| Hayti | 0 | 0 | |
| High Ridge | 44 | 1.38 | |
| Hillsboro | 73 | 2.81 | |

| Club Name | Club Totals | Per Capita | Cash |
|---------------------------------------|-------------|------------|------|
| Jackson | 0 | 0 | |
| Kennett | 30 | 1.43 | |
| Kirkwood | 2 | 0.025 | |
| Louisiana | 0 | 0 | |
| Mexico | 0 | 0 | |
| Montgomery County | 16 | .89 | \$40 |
| O'Fallon | 0 | 0 | |
| Paris | 100 | 4.35 | |
| Perryville | 0 | 0 | |
| Piedmont | 0 | 0 | |
| Poplar Bluff | 0 | 0 | |
| Reynolds County | 0 | 0 | |
| Rotaract club of East Central College | 0 | 0 | |
| Rotaract club of SLU | 0 | 0 | |
| Sikeston | 2 | 0.06 | |
| Southeast Missouri Service | 477 | 14.03 | |

| Club Name | Club Totals | Per Capita | Cash |
|---------------------------------|-------------|------------|-------|
| Spirit of St. Louis County | 1804 | 82 | |
| St. Charles | 102 | 1.59 | |
| St. Charles-Sunrise | 207 | 7.96 | \$20 |
| St. Francois County/Bonne Terre | 159 | 3.78 | |
| St. Louis | 67 | .52 | |
| St. Louis Civilians | 8 | 0.38 | |
| St. Peters | 0 | 0 | |
| Ste. Genevieve | 50 | 1.04 | |
| Steele | 0 | 0 | |
| Sullivan | 56 | 1.93 | |
| Troy | 2 | 0.05 | |
| Union | 24 | .57 | \$25 |
| Vandalia | 4 | 0.27 | |
| Warren County | 15 | .57 | |
| Washington | 41 | 0.43 | |
| Webster Groves | 84 | 1.62 | |
| Wentzville | 580 | 7.84 | |
| West St. Louis County | 34 | 1.1 | |
| | 8784 | 4.81 | \$741 |

LIGHT TASTINGS FROM A VARIETY OF LOCAL RESTAURANTS, TOP SHELF SPIRITS, WINE AND BEER!

Rotary
Rotary Club of St. Charles

CASINO Night!

TUESDAY 7TH NOVEMBER

ST. CHARLES CONVENTION CENTER | 6-9PM
LOWER LEVEL - SOUTH EXHIBIT HALL

Tickets on Sale!

ALL YOUR FAVORITE GAMES!
BLACK JACK, POKER, CRAPS & MORE

PROCEEDS TO BENEFIT LOCAL CHARITIES

SCAN NOW TO PURCHASE TICKETS!

\$50.00 PER PERSON

QUESTIONS? CALL 6369466053 or EMAIL: ROTARY2341@GMAIL.COM

FOR MORE INFO OR TICKETS GO TO: STCHARLESROTARY.ORG

SOLES FOR SOULS
April 2023 - April 2024

1 Rotarian
1 Pair of Shoes
+1 Meeting per Month

20,000* Children Helped

It will only cost you 1 venti caramel macchiato per month to help a child attend school and fight diseases.

Rotary
District 6060

*1,815 District 6060 Rotarians x 12 pairs of shoes = 21,780