

YOUTH PROTECTION 2025

District 5500

Statement of Conduct for Working With Youth

Rotary International strives to create and maintain a safe environment for all youth who participate in Rotary activities.

To the best of their ability, Rotary members, their partners, and other volunteers must safeguard the children and young people with whom they come into contact and protect them from physical, sexual, and psychological abuse.



Rotary is committed to fostering environments that are safe and positive for young people and free from discrimination and physical, emotional, and sexual abuse.

ROTARY'S COMPREHENSIVE APPROACH TO YOUTH PROTECTION INCLUDES:

4

- No tolerance for abuse or harassment of young people
- Policies that prevent misconduct and outline how to respond to grooming behaviors and abuse that involve youth and other program participants
- Mandatory youth protection training for governors-elect
- A dedicated and trained staff that uses a trauma-informed approach when receiving and responding to reports of sexual abuse or harassment

ROTARY'S APPROACH, CON'T.

A certification process that requires Rotary districts involved in Rotary Youth Exchange to have:

- Student, family, and volunteer training in abuse prevention
- Volunteer screening that includes an application, criminal background check, and reference checks
- A process for reporting allegations of abuse and harassment to Rotary and local law enforcement
- District-specific youth protection policies
- On-site evaluations (audits) that are conducted by Rotary staff members

YOUTH PROTECTION RESOURCES FOR CLUB MEMBERS

6

- [Rotary Youth Protection Guide](#)
- [Protecting Youth Program Participants](#) (online course)
- [Electronic and Online Safety Considerations](#)
- [Developing a Crisis Management Plan](#)
- [Rotary Code of Policies, section 2.120.](#)

To access these documents, go to Rotary International, Youth Protection/My Rotary, or type this into your search engine:
<https://my.rotary.org/en/knowledge-and-resources/resources-and-reference/youth-protection>

YOUTH PROTECTION IS NOT LIMITED TO EXCHANGE STUDENT PROGRAMS!

7



FOR INSTANCE...

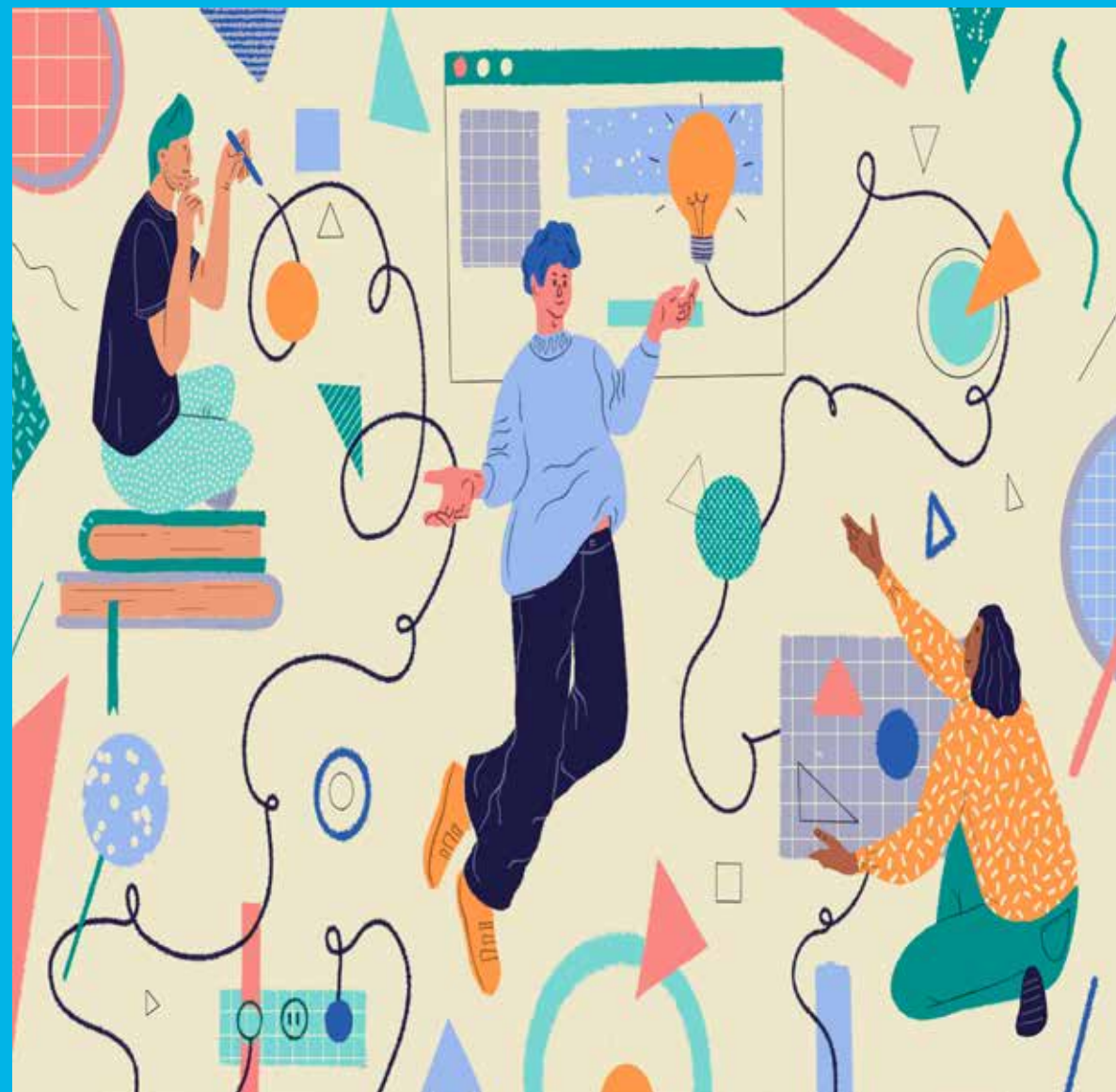
RYLA

Tutoring

Volunteering

Judging

Rotaract



TYPICAL INTERACTIONS

RYLA—driving kids to and from RYLA, serving as an adult supervisor at RYLA, maybe interviewing kids/parents about attending

Foreign student—in home(s), visiting at Club, extra trips

Student of Month

Scholarship Winners

Fund raising events with youth group

Tutoring at school

Mentoring

WHAT RISKS ARE INVOLVED WITH KIDS?

- Car accident going to or from RYLA
- Unexpected illness/allergy
- Kids doing stupid stuff outside of supervision
- Kids doing stupid stuff while supervised
- Accidental injury while at fund raiser (popcorn burns, tripping while serving meals, coffee burns)
- Accidental issues with medication
- “Etcetera, etcetera, etcetera” from *The King and I*

THIS IS WHY WE HAVE INSURANCE!

As part of your semi-annual Club dues, your Club receives insurance.

If your Club is going to sponsor an event or is required to provide insurance as a vendor at an event sponsored by another entity, your Club needs to inform the RI Insurance Carrier. You can get this information at **insurance@rotary.org**.

What if, instead of an accident, there is a deliberate infliction of injury, abuse, child abuse, neglect or a “reportable offence”?



DUTY TO REPORT

A.R.S. Sec. 13-3620

WHAT ARE THE IMPORTANT POINTS OF THE STATUTE?

ANY person who

- REASONABLY believes
- A MINOR is the victim of
 - Physical injury
 - Abuse
 - Child abuse
 - A reportable offense (sex offense) or
 - Neglect
- Inflicted by OTHER THAN ACCIDENTAL means or not explained by the medical history

Shall IMMEDIATELY REPORT or cause a report to be made to:

- A law enforcement officer.
- Department of Child Safety at 1-888-SOS-CHILD—or if not an emergency, report at: <https://dcs.az.gov/report-child-abuse>
- EXCEPT if the suspected abuser does NOT have the care, custody, control of the child—then ONLY CALL LAW ENFORCEMENT.
- Or, if a Native American child on a reservation, to tribal police or a social service agency.

“Immediately” is HOW FAST??



Cheetah fast!!

WHAT ARE SIGNS OF ABUSE?

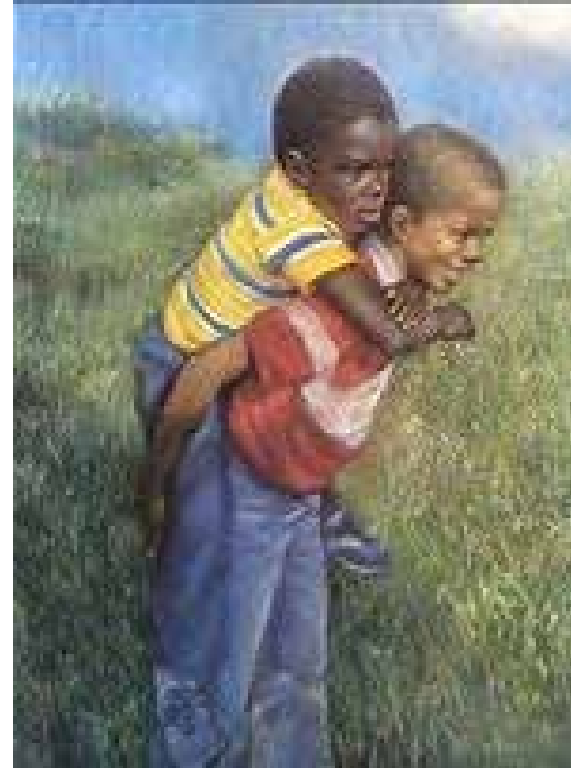
- Unexplained bruises, cuts, burns or bruises, cuts and burns that do not match up with the medical or other reason given.
- Changes to personality—more withdrawn, sullen, acting out, avoiding being touched, flinching when touched—or acting out in a more sexual way.
- Changes to dress—long sleeves, long pants even in hot weather; large, baggy clothes to disguise body shape or suddenly more suggestive clothes.

SIGNS OF ABUSE, CON'T.

- Anxiety, obsessive compulsive behaviors, fear of certain person or unwillingness to be around a certain person.
- Change in eating patterns or body image.
- Depression, excessive crying and mood swings.
- Difficulty concentrating at school or other activities.
- Aggressive behavior toward others, overly hostile words or actions to peers, family members, adults, pets.

Who is a “person” under 13-3620?

- Medical personnel, counselors, social workers
- Peace officers, child welfare investigators clergy/priests/etc.
- Parent, stepparent or guardian of the minor
- Teachers, advocates, school volunteers
- Any other person who has responsibility for the care or treatment of the minor



HOW IS THE REPORT MADE?

- Electronically or
- By telephone
- If you know, you should provide the name of the child, the names of the parents/guardians, the child's age, the extent of the injury/abuse, previous injuries/abuse, and any other information that may be helpful in determining the cause.
- You are NOT required to investigate!!

IF you FAIL to make a report

- You are guilty of a class 1 misdemeanor for failing to report intentional abuse, child abuse, or neglect inflicted on a minor.
- If you fail to report a reportable (sexual) offense, you are guilty of a class 6 felony.

YOU ARE PROTECTED

Whether as a mandatory or voluntary reporter, for making a report

- From civil law suits
- From criminal law suits
- **EVEN IF YOU ARE WRONG**

UNLESS...

- You acted with **MALICE OR**
- You are actually the person **CAUSING** the abuse or neglect!

ROTARY'S REPORTING REQUIREMENT

Rotary International takes all reports of misconduct seriously, and it is the responsibility of all Rotary members and non-member volunteers to ensure that any serious incidents that involve youth and program participants – including all allegations of abuse or harassment – are promptly reported to local authorities and to Rotary International. Doing so not only is required but also is a way to prevent further abuse or harm.

HOW TO REPORT A YOUTH PROTECTION CONCERN

23

1. Ensure that the young person is in a safe environment.
2. In case of emergency, contact local law enforcement immediately.
3. Report your concern to Rotary International, at <https://ri.i-sight.com/portal> within 72 hours.

HOW TO REPORT AN ACCIDENT, INJURY, OR OTHER SITUATION THAT MAY AFFECT A YOUNG PERSON'S SAFETY

You can use the [online reporting form](#) to notify RI about an accident, injury, natural disaster, political unrest, or any other situation that may affect a young person's safety or well-being.

WHEN ROTARY RECEIVES A REPORT OF A YOUTH PROTECTION CONCERN, IT WILL:

- Ensure that any young person who is affected is in a safe environment
- Encourage clubs and districts to offer support or resources for young people who are affected, as well as their families or their peers
- Ensure that youth protection concerns are reported to local law enforcement when necessary
- Guide clubs and districts in conducting internal investigations when they're required and taking any necessary action based on the results

CON'T ACTIONS

- Prevent any person who is alleged to have violated Rotary's youth protection policies from having contact with young people in a Rotary setting until the matter is resolved
- Ban any person who admits to, is convicted of, or is otherwise known to have engaged in abuse or harassment of youth from being a club member or participating in activities with youth
- Outline actions that districts must take to maintain their Rotary Youth Exchange certification if an opportunity to improve their youth protection policies or procedures is identified
- Suspend a district's Rotary Youth Exchange certification if necessary
- Advise clubs and districts on how to strengthen their policies or procedures after any report of a youth protection concern, regardless of the outcome.

WHO CAN REPORT?

Anyone can report a youth protection concern, including youth program participants, parents or guardians, Rotary Youth Exchange host families, or members of the community.

Rotary members are required to report youth protection concerns or any actions that violate our youth protection policies to Rotary International within 72 hours of learning of an incident. Failing to report a youth protection concern can have serious consequences, including the termination of your membership.

Reporting requirements according to the Rotary Code of Policies

All allegations of abuse or harassment shall be reported to RI within 72 hours of learning of the incident. Failure to report incidents to RI within 72 hours may result in suspension of the district's Rotary Youth Exchange certification. Where there is sufficient evidence that an individual, club, or district knowingly failed to report as required, the general secretary may determine whether and/or the extent to which involved parties may continue to be eligible to participate in Rotary's youth programs, or whether additional sanctions may be necessary, including but not limited to requiring the club to terminate an individual's membership.



QUESTIONS

Candyce Pardee

Youth Protection Officer, District 5500

Sierra Vista Rotary Club

Candyce.beumler.pardee@gmail.com

Text or call: 520-678-3108

