

ROTARY CLUB OF FIG GARDEN

BOARD OF DIRECTORS

\*Regular Meeting: 26 March 2008 --

\*Members Present

\*Directors:

Stewart Butler  
Kerni Donis  
Jim Gibbs  
Sasan Rahmatian  
Rod Rimmer  
Stan Skiba  
Teresa Patterson  
Excused: Heidi Horton

\*Assistant Secretary:

Sherry Forath

\*Foundation Treasurer:

Fausto Hinojosa

\*Others Present:

Tom Ogden, Paul Harris Chair  
Governor Elect August  
Hioco

Past Presidents:

Bob Bergin, By-Laws' Chair

\*President: **D i s t r i c t**

Judy Case

\*Past President: **R o d C o b u r n**

**Bill Robinson**

Eric Fogderude

John Heberger

Marty Dietz

\*President Elect: **P a s t F o u n d a t i o n T r e a s u r e r J e f f  
Garza**

**Tim Swanson**

\*Treasurer:

Scott Bristol

\*Secretary:

Doug Cords

The meeting was called to order at 7:00 a.m. by President Judy Case in the Boardroom of the Stoughton Davidson Accountancy Corporation at 2520 West Shaw Lane, Suite 101, Fresno, California 93711.

Disqualified due to attendance problems, Kerry Donis was not present at the meeting's beginning and the re-nomination was tabled until next month.

\*AGENDA APPROVAL:

no items were added to the agenda:

\* Stewart Butler: Valley Teen Ranch Funding Consideration

\* Doug Cords: Roberta Lynn Boren Memorial Discussion

It was MSC to approve the Agenda, as amended.

\*CONSENT ITEMS:

-Membership As Of 1 March 2008 98  
-Attendance For The Month Of February 2008= 82%

It was MSC to approve the Consent Items as presented.

\*APPROVAL OF MINUTES:

It was MSC to approve the Minutes of the Regular Board Meeting and the Foundation Board Meeting of 27 February 2008.

\*PRESIDENT'S REPORT: (Judy Case)

Judy reported on the official acceptance of Whitney Chessum, as an Exchange Student to Taiwan. She gave a sponsor home update for our incoming Exchange Student.

It was MSC to appoint Past President Marty Dietz as the "Club Youth Exchange Officer," and Kurt Zumwalt as the "Club Counselor," per request from Junso Ogawa.

It was reported that the recent Area Presidents' Meetings have been focused upon the District Conference.

Our Incoming Student is Stephane Lang, who will arrive in August and will be attending Bullard High School. He will be escorted to many meetings by Past President Eric Fogderude. More Host Families are requested, please.

\*SECRETARY'S REPORT: (Doug Cords)

The Board reviewed the nomination of former member Daniel Bonyhadi, sponsored by August Hioco, John Heberger and Jeff Garza. There was as well a review of the Objection Procedure and the fact that the Membership Committee received the matter for review of new information.

The Secretary reviewed the By-Laws and the 4-Way Test Criteria.

It was MSC to enter into Executive Session at 7:08 a.m. Membership Chairman, Past President Marty Dietz assembled a team, per By-Laws, to include Past Presidents Eric Fogderude and George Zengel. Past President Bob Bergin, our Club's By-Laws "Keeper" was the fourth non-Board Member invited to be a part of the initial discussions, to guide the Board with questions, although Mr. Bergin was not present in Executive Session.

The Membership Committee requested that no written report be kept of its findings, which were then presented.

The Committee, after all deliberations, recommends affirmation of its previous decision to approve the Nomination of Daniel Bonyhadi.

It was MSC to exit Executive Session at 8:16 4,am. and the public session continued, with all non-Board Member guests being re-invited to the room. President Case offered up time for public comments and many items of input were given for the Board's consideration.

It was MSC, after discussion, to utilize a written ballot for the required vote. Past President John Heberger lodged a complaint against



---

INTERNATIONAL DISTRICT 5230  
YOUTH EXCHANGE PROGRAMME

---

[www.5230youth.org](http://www.5230youth.org)

March 18, 2008

Peter M. Golombek  
[ycpeterg@comeast.net](mailto:ycpeterg@comeast.net)  
Youth Exchange Officer

William P. Honohan  
[tvrtwvn@sbcglobalnet](mailto:tvrtwvn@sbcglobalnet)  
Outbound Coordinator

Melissa Mears  
[meiittsamearti@hotmail.com](mailto:meiittsamearti@hotmail.com)  
Language & Culture Specialist

Joe Hertlein  
[joeli](mailto:joeli)  
District Representative  
Coastal Area

Junso Ogawa  
[aCiiViiWa@i10L.COM](mailto:aCiiViiWa@i10L.COM)  
District Representative  
Fresno Area

Kristin Pires  
[kristinpires@honnail.com](mailto:kristinpires@honnail.com)  
District Representative  
South Valley Area

5731 West Ashland Ave.

Visalia, California

93277 USA

Ph. 559-741-1457

Fax 559-741-9452

[www.5230youth.org](http://www.5230youth.org)

Ms. Judith G. Case  
President  
Fig Garden Rotary Club  
2346 South Newmark Avenue  
Sanger, California 93657-9509

Dear President Judy:

When the Board of Directors approved Fig Garden Rotary Club to sponsor of an out-bound and in-bound foreign exchange student, due to the lateness of submitting our Commitment form, I agreed to serve as both the Fig Garden Rotary Club Youth Exchange Officer and Club Counselor.

Since that time, Whitney Chessum has been selected as the out-bound student and will be spending a year in Taiwan. Stephane Lange from Belgium will be our in-bound student. He is scheduled to arrive in August. He will be attending Bullard High School.

Jonathan R. and Charlene Chessum will be serving as the first host family for Stephane. Eric K. Fogderude, whose office is across the street from Bullard High School, will be bringing Stephane to our weekly Fig Garden Rotary Club meetings.

Now that all aspects of the youth exchange program are settling into a routine, in order to provide an adequate level of service to our in-bound exchange student, Stephane, recommend the Board of Directors appoint Marty E. Dietz, Past President, as the Club Youth Exchange Officer and Kurt Zumwalt as the Club Counselor. I have spoken with both Marty and Kurt and they are willing to serve in their respective roles.

With my role on the District Youth Exchange Committee, I will continue to work with everyone to ensure the Youth Exchange Program at Fig Garden Rotary Club will be successful.

Respectfully submitted,

nso Ogawa

\*SECRETARY'S REPORT, Continued:

the approved motion, asserting that it was, in his opinion, a "secret" ballot, not acceptable as a process. The Secretary and the President this week have been in contact often with Bob Bergin and his response to the question of a written ballot follows:

- Original Message .....

From: Bob Bergin

To: Doug Cords

Cc: Judy Case

Sent: Monday, March 24, 2008 2:19 PM

Subject: RE: FW: Wednesday

1. Membership committee report is given to the board. Board can vote to receive it in executive session, and board shall keep it confidential as a closed session item. Board can ask committee to attend closed session in order to ask followup questions. Article VI, Sec 2 (c) contemplates non board members providing information to the executive session. Report is not limited to a yes/no. The board shall consider the new report ... and shall ballot on the proposed member." The committee is limited to the new matters raised in the objection. The board would normally limit itself to the matters in the new report but the bylaws do not explicitly say that.
2. I see no restriction on Bill participating in executive session.
3. Board must vote in public. VI 2 (c)
4. I see no restriction on Bill voting.

Art II Sec 1 makes the board the "governing body of this Club...." The board has power to carry out this function under the bylaws. Art XV cross references Rotary Manual of Procedure, RI bylaws, and Ca Corporations code.

**From:** Doug Cords [mailto:dougc@csufresno.edu]

**Sent:** Monday, March 24, 2008 2:30 PM

**To:** Bob Bergin

**Subject:** Re: FW: Wednesday

Thank You So Much, Mr. President -

Point Of Order, Please: under what circumstances, if any, can a written ballot be utilized?

Doug

From: "Bob Bergin" <RBergin@KMULAW.com >

To: "Doug Cords" <dougc@csufresno.edu>

Sent: Monday, March 24, 2008 2:42 PM

Subject: RE: FW: Wednesday

Bylaws do not say. I would say the board could decide to use a written ballot, but a written ballot could not be used to make it a secret ballot.

\*SECRETARY'S REPORT. Continued:

The questions and responses were read to the Board. The ballot was written, with results tabulated by President Judy Case with witness Secretary Doug Cords, the results of which were reported immediately in public.

The following motion was made:

Move to affirm the Board's previous approval of proposed member Daniel Bonyhadi, per Membership Committee recommendation after its due diligence following objection receipt.

Voting was reported as follows:

Aye:	9
Nay:	4

Per Club By-Laws, a "nay" vote which totals four causes the Nomination not to move forward.

Classification Committee Chair John Ganahl requests the Board to approve the following new classifications. It was MSC to approve:

-Brad Majors:	Banking: Business Development
-Niko Argeres:	Real Estate: Commercial Investment

Secretary to order new Blue Badges for these Members.

We welcomed back to the Club former member Was Segal on 14 March, to a rousing reception.

It was MSC to nominate our member Past District Governor Roy Massey as Official Delegate, Fig Garden Rotary, to the Rotary International Council On Legislation. Secretary to write follow-up letter on this matter.

Our Club is allowed four Official Delegates to the upcoming District Conference. It was MSC to nominate Rod Coburn, Judy Case and Roy Massey, with the President being granted the right to nominate a fourth delegate.

A brief discussion ensued regarding the passing away of Past President Pat Farzaroli. Wendy Cords is preparing a framed collage which will include Pat's "Honorary Badge," a photo and the history of his year as President. The Board wishes to invite Pat's widow Jddi and his two daughters to a meeting in the future, so President Judy can present this gift to the family on behalf of all Fig Garden Rotarians.

The Secretary noted, after some discussion, the recission of nominations for membership of Past Members Harvey Armas, Harry Wilson and Richard Satoyan. Sponsors were Norm Fletcher and Eric Fogderude.

Tn our New Member Pipeline, Brenda Brown, sponsored by Stewart Butler and Susan Weisbrodt, is ready for induction. Secretary will have all materials ready when notified of her date for admission.

\*SECRETARY'S REPORT, Continued:

New Member Proposal:

ELLEN KNAPP

Executive Director, American Red Cross, Fresno/Madera Chapter  
Sponsors Are Steve Bettencourt and Heidi Horton  
Membership Committee has approved.  
Proposed Classification: Non-Profit Organizations: Emergency Assistance

It was MSC to approve the Nomination. Secretary to immediately forward paperwork to Rotary Information.

\*FOUNDATION: ( Tom Ogden)

Tom presented to the Board updates on all Foundation Activities for the past Month.

Our all-time giving is now at \$307,734.

\*TREASURER'S REPORT: ( Scott Bristol)

In the interest of time, Scott provided for the Board updated Financials in written form only, as follows:

-Checking Account: County Bank -	\$17,771.09
-Certificate Of Deposit: County Bank -	26,933.71
-Members Current Accounts -	13,361.75
-Deposits:	<u>1,034.80</u>
-Totals:	\$59,101.35

A full financial update will be presented next month.

IMPORTANT NOTE: Because of time constraints, all other regular reports and business items were tabled until next month's meeting.

\*NEW BUSINESS:

It was MSC to allocate the sum of \$500. for Valley Teen Ranch's "Prom Night," to be matched by North Fresno Rotary Club, per Past President Phil Setrakian. Scott Bristol will pay the monies, from Club Funds, to the Foundation, so an appropriate check may be issued.

It was MSC to allocate points enough to total a full Paul Harris Fellowship in memory of our past club servant, Roberta Lynn Boren, who recently passed away. The Board fully supports this award and will invite her family to a meeting wherein President Judy can present the honor and recognition.

\*ADJOURNMENT: President Case adjourned the Meeting at 9:00 a.m.

\*NEXT MEETING: 23 April 2008.

Respectfully Submitted By Sherry Forath, Assistant Secretary and Doug Cords, Ph.D., Secretary.

**Rotary Club of Fig Garden - Fresno  
Board of Directors  
Meeting of 2/27/08**

**Foundation Chair Report:**

**All time giving: \$307,734-  
Number of PHF's 230  
Number of Benefactors: 23**

**2007-08 Giving:**

<b>Total Billed</b>	<b>2007-2008</b>	<b>\$ 18,400-</b>
<b>Total Collected (AO 1/22/08)</b>		<b>\$ 14,275- (79%)</b>
<b>Per Capita on total Billed plus 2 projected Boards for 07/08</b>		<b>\$ 176- Per Member</b>
<b>Per Capita on total collected</b>		<b>\$ 144- Per Member</b>
<b>District Goal per capita</b>		<b>\$ 130- Per Member</b>
<b>Club % to Goal as of 3/26/08</b>		<b>109%</b>

**In this 2007/2008 rotary year 2 PHF has been presented.**

**Pending presentation:**

**Anne Federico Markham, Craig De Shields,  
Douglas Alan Cords Jr.; Mark J. Anselmo; Fausto Hinojosa;  
Chase Hixson; Philip Ogden.**

**In Process:**

**Carole Reed.**

**There are 7,545 Club recognition points available after this year's approval of 2400 for 07/08 match. So far this Rotary year 400 points have been utilized and a further 500 earmarked for Member commitments.**

**Tom Ogden, Foundation Chair**

# Rotary Club of Fig Garden

## Club Accounts

Balance sheet for period ending 29 February 08

Printed 3/22/2008

### ACCUMULATED FUNDS

Club Funds	
Balance at beginning of year	\$32,631.17
Excess (Deficit) for period	\$11,522.62
Balance to Date	\$44,153.79
TOTAL FUNDS	<hr/> \$44,153.79

Represented by:

### ASSETS

Checking Account-County Bank	\$17,771.09
County Bank-Cert of Time Dep	\$26,933.71
Member's Current Accounts	\$13,361.75
Deposits	\$1,034.80
Total Assets	<hr/> \$59,101.35

### LIABILITIES

Foundation Payable	\$463.00
PHF Clearing	\$50.00
Woodward Park Bench Project	\$2,434.56
R.I Convention Reserve	\$12,000.00
Total Liabilities	<hr/> \$14,947.56

NET ASSETS	<hr/> \$44,153.79
------------	-------------------



# Rotary Club of Fig Garden

## Club Accounts

Income and Expenditure for period to fiAnxtexi

Printed 3/22/2008

	Current Month	Year to Date
<b>INCOME</b>		
Member Dues	\$125.00	\$24,500.00
Terminated Members	\$0.00	(\$514.00)
Admin Charge-New Members	\$80.00	\$400.00
Fines	\$0.00	\$9,695.00
Raffle	\$105.00	\$880.93
Interest	\$60.20	\$692.09
Demotion Party	\$0.00	\$50.00
Retreat	\$0.00	\$3,090.00
Races	\$0.00	\$2,650.00
Mystery Dinner	\$0.00	\$1,900.00
Basque Hotel Luncheon	\$0.00	\$784.00
Christmas Party	(\$18.00)	\$1,620.00
Miscellaneous Income	\$14.00	\$154.25
<b>Total Income</b>	<b>\$366.20</b>	<b>\$45,902.27</b>
<b>EXPENDITURE</b>		
R.I. Dues	\$2,926.25	\$6,276.85
District Dues	\$2,389.24	\$4,754.10
Supplies and Postage	\$192.75	\$534.88
Computer Expenses and Web Site	\$0.00	\$860.42
Officer Expense	\$14.28	\$1,504.43
Miscellaneous Expense	\$225.00	\$576.42
Raffle Prizes	\$0.00	\$400.00
Speakers Dedication Gift	\$0.00	\$579.76
Lunch-Tornino's	\$702.00	\$3,802.00
Paul Harris Framing	\$61.55	\$61.55
Speakers	\$0.00	\$296.36
Banners, Badges, Pins	\$0.00	\$742.30
Hospitality and Fellowship	\$0.00	\$56.66
Duck Races	\$0.00	\$139.52
Retreat	\$0.00	\$3,545.48
The Races	\$0.00	\$3,265.74
Mystery Dinner	\$0.00	\$2,123.25
Basque Hotel	\$0.00	\$866.25
Christmas Party	\$1,659.29	\$1,659.29
Valentines Day	\$296.90	\$296.90
Auction	\$294.87	\$1,033.48
Camp Royal	\$0.00	\$200.00
Community Projects	\$0.00	\$179.01
Paul Harris	\$0.00	\$625.00
<b>Total Expenditure</b>	<b>\$8,762.13</b>	<b>\$34,379.65</b>
<b>Excess (Deficit)</b>	<b>(\$8,395.93)</b>	<b>\$11,522.62</b>

# Rotary Club of Fig Garden

## Club Accounts

### Income & Expenditure: Comparison to Budget to February 08

Printed 3/22/2008

	Current Month	Year to Date	Budget to Date	Variance
<b>INCOME</b>				
Member Dues	\$125.00	\$24,500.00	\$24,375.00	\$125.00
Terminated Members	\$0.00	(\$514.00)	\$0.00	(\$514.00)
Admin Charge-New Members	\$80.00	\$400.00	\$560.00	(\$160.00)
Fines	\$0.00	\$9,695.00	\$10,000.00	(\$305.00)
Raffle	\$105.00	\$880.93	\$1,000.00	(\$119.07)
Interest	\$60.20	\$692.09	\$640.00	\$52.09
Demotion Party	\$0.00	\$50.00	\$0.00	\$50.00
Roger Rockas	\$0.00	\$0.00	\$2,000.00	(\$2,000.00)
Retreat	\$0.00	\$3,090.00	\$3,000.00	\$90.00
Races	\$0.00	\$2,650.00	\$2,400.00	\$250.00
Mystery Dinner	\$0.00	\$1,900.00	\$800.00	\$1,100.00
Field Trips	\$0.00	\$0.00	\$600.00	(\$600.00)
Offsite Lunches	\$0.00	\$0.00	\$900.00	(\$900.00)
Basque Hotel Luncheon	\$0.00	\$784.00	\$700.00	\$84.00
Christmas Party	(\$18.00)	\$1,620.00	\$4,200.00	(\$2,580.00)
Miscellaneous Income	\$14.00	\$154.25	\$400.00	(\$245.75)
<b>Total Income</b>	<b>\$366.20</b>	<b>\$45,902.27</b>	<b>\$51,575.00</b>	<b>(\$5,672.73)</b>

## EXPENDITURE

R.I. Dues	\$2,926.25	\$6,276.85	\$6,700.00	\$423.15
District Dues	\$2,389.24	\$4,754.10	\$4,800.00	\$45.90
Supplies and Postage	\$192.75	\$534.88	\$914.21	\$379.33
Computer Expenses and Web Site	\$0.00	\$860.42	\$360.00	(\$500.42)
Officer Expense	\$14.28	\$1,504.43	\$520.00	(\$984.43)
Terminated Members	\$0.00	\$0.00	\$710.00	\$710.00
Miscellaneous Expense	\$225.00	\$576.42	\$119.30	(\$457.12)
Bank Charges	\$0.00	\$0.00	\$80.00	\$80.00
District Governor Expenses	\$0.00	\$0.00	\$320.00	\$320.00
Raffle Prizes	\$0.00	\$400.00	\$797.39	\$397.39
Speakers Dedication Gift	\$0.00	\$579.76	\$720.00	\$140.24
Lunch-Tornino's	\$702.00	\$3,802.00	\$3,200.00	(\$602.00)
Nominating Comm Dinner	\$0.00	\$0.00	\$250.00	\$250.00
Equipment Expense	\$0.00	\$0.00	\$800.00	\$800.00
Paul Harris Framing	\$61.55	\$61.55	\$640.00	\$578.45
Speakers	\$0.00	\$296.36	\$0.00	(\$296.36)
Banners, Badges, Pins	\$0.00	\$742.30	\$535.03	(\$207.27)
Hospitality and Fellowship	\$0.00	\$56.66	\$3,333.36	\$3,276.70
Blue Book	\$0.00	\$0.00	\$240.00	\$240.00
Rotary Information	\$0.00	\$0.00	\$240.00	\$240.00
Membership	\$0.00	\$0.00	\$200.00	\$200.00
Roger Rockas	\$0.00	\$0.00	\$2,000.00	\$2,000.00
Duck Races	\$0.00	\$139.52	\$300.00	\$160.48
Retreat	\$0.00	\$3,545.48	\$4,200.00	\$654.52
The Races	\$0.00	\$3,265.74	\$2,400.00	(\$865.74)
Mystery Dinner	\$0.00	\$2,123.25	\$800.00	(\$1,323.25)
Field Trips	\$0.00	\$0.00	\$800.00	\$800.00
Offsite Lunches	\$0.00	\$0.00	\$1,200.00	\$1,200.00
Basque Hotel	\$0.00	\$866.25	\$700.00	(\$166.25)
Christmas Party	\$1,659.29	\$1,659.29	\$4,200.00	\$2,540.71
Valentines Day	\$296.90	\$296.90	\$200.00	(\$96.90)
Auction	\$294.87	\$1,033.48	\$0.00	(\$1,033.48)
Camp Royal	\$0.00	\$200.00	\$0.00	(\$200.00)
Community Projects	\$0.00	\$179.01	\$0.00	(\$179.01)

# Rotary Club of Fig Garden

## Club Accounts

### Income & Expenditure: Comparison to Budget to February 08

Printed 3/22/2008

	<u>Current Month</u>	<u>Year to Date</u>	<u>Budget to Date</u>	<u>Variance</u>
Paul Harris	<u>\$0.00</u>	<u>\$625.00</u>	<u>\$0.00</u>	<u>(\$625.00)</u>
<b>Total Expenditure</b>	\$8,762.13	\$34,379.65	\$42,279.29	\$7,899.64
Excess (Deficit)	(\$8,395.93)	\$11,522.62	\$9,295.71	\$43757-249—

*Z..24,HI*

# Rotary Club of Fig Garden

## Club Accounts

Income & Expenditure: Current Year vs Previous Year to February 08

Printed 3/22/2008

	Month		Year to Date	
	Current Year	Previous Year	Current Year	Previous Year
<b>INCOME</b>				
Member Dues	\$125.00	\$0.00	\$24,500.00	\$23,062.50
Terminated Members	\$0.00	\$0.00	(\$514.00)	\$0.00
Admin Charge-New Members	\$80.00	\$0.00	\$400.00	\$235.00
Fines	\$0.00	(\$30.00)	\$9,695.00	\$9,900.00
Raffle	\$105.00	\$242.00	\$880.93	\$1,078.00
Interest	\$60.20	\$88.40	\$692.09	\$895.16
Demotion Party	\$0.00	\$0.00	\$50.00	\$0.00
Roger Rockas	\$0.00	\$997.50	\$0.00	\$997.50
Retreat	\$0.00	\$0.00	\$3,090.00	\$2,955.00
Races	\$0.00	\$0.00	\$2,650.00	\$2,673.00
Mystery Dinner	\$0.00	\$0.00	\$1,900.00	\$0.00
Basque Hotel Luncheon	\$0.00	\$0.00	\$784.00	\$675.75
Christmas Party	(\$18.00)	\$0.00	\$1,620.00	\$4,200.00
Auction	\$0.00	\$0.00	\$0.00	(\$50.00)
Miscellaneous Income	\$14.00	\$0.00	\$154.25	\$368.70
<b>Total Income</b>	<b>\$366.20</b>	<b>\$1,297.90</b>	<b>\$45,902.27</b>	<b>\$46,990.61</b>
<b>EXPENDITURE</b>				
R.I. Dues	\$2,926.25	\$0.00	\$6,276.85	\$6,028.66
District Dues	\$2,389.24	\$0.00	\$4,754.10	\$4,559.06
Supplies and Postage	\$192.75	\$0.00	\$534.88	\$856.80
Computer Expenses and Web Site	\$0.00	\$0.00	\$860.42	\$472.00
Officer Expense	\$14.28	\$0.00	\$1,504.43	\$911.28
Terminated Members	\$0.00	\$0.00	\$0.00	\$710.00
Miscellaneous Expense	\$225.00	\$52.00	\$576.42	\$253.70
Member Accommodations	\$0.00	\$0.00	\$0.00	\$539.00
District Governor Expenses	\$0.00	\$321.28	\$0.00	\$321.28
Dist Conf and Assembly	\$0.00	\$247.84	\$0.00	\$247.84
Raffle Prizes	\$0.00	\$0.00	\$400.00	\$792.21
Speakers Dedication Gift	\$0.00	\$0.00	\$579.76	\$983.89
Lunch-Tornino's	\$702.00	\$0.00	\$3,802.00	\$1,762.00
Equipment Expense	\$0.00	\$0.00	\$0.00	\$1,633.73
Paul Harris Framing	\$61.55	\$544.19	\$61.55	\$781.73
Programs	\$0.00	\$0.00	\$0.00	\$60.00
Speakers	\$0.00	\$0.00	\$296.36	\$0.00
Demotion Party	\$0.00	\$0.00	\$0.00	\$1,926.00
Banners, Badges, Pins	\$0.00	\$0.00	\$742.30	\$480.30
Hospitality and Fellowship	\$0.00	\$0.00	\$56.66	\$0.00
Blue Book	\$0.00	\$0.00	\$0.00	\$259.14
Roger Rockas	\$0.00	\$992.25	\$0.00	\$992.25
Duck Races	\$0.00	\$0.00	\$139.52	\$284.69
Retreat	\$0.00	\$0.00	\$3,545.48	\$3,298.97
The Races	\$0.00	\$0.00	\$3,265.74	\$3,559.39
Mystery Dinner	\$0.00	\$0.00	\$2,123.25	\$0.00
Basque Hotel	\$0.00	\$0.00	\$866.25	\$692.32
Christmas Party	\$1,659.29	\$0.00	\$1,659.29	\$7,464.97
Valentines Day	\$296.90	\$0.00	\$296.90	\$0.00
Auction	\$294.87	\$5,754.06	\$1,033.48	\$5,754.06
Camp Royal	\$0.00	\$0.00	\$200.00	\$200.00
Community Projects	\$0.00	\$0.00	\$179.01	\$0.00
Paul Harris	\$0.00	\$0.00	\$625.00	\$0.00
<b>Total Expenditure</b>	<b>\$8,762.13</b>	<b>\$7,911.62</b>	<b>\$34,379.65</b>	<b>\$45,825.27</b>

# Rotary Club of Fig Garden

## Club Accounts

### Income & Expenditure: Current Year vs Previous Year to February 08

Printed 3/22/2008

	Month		Year to Date	
	Current Year	Previous Year	Current Year	Previous Year
Excess (Deficit)	(\$8,395.93)	(\$6,613.72)	\$11,522.62	\$1,165.34

ROTARY CLUB OF FIG GARDEN

FOUNDATION

BOARD OF DIRECTORS

\*Regular Meeting: 26 March 2008 --

\*Members Present:

\*Directors:

Stewart Butler  
Kerri Donis  
Jim Gibbs  
Sasan Rahmatian  
Rod Rimmer  
Stan Skiba  
Teresa Patterson  
Excused: Heidi HOrton

\*President:

Judy Case

\*Past-President:

Bill Robinson

\*President-Elect:

Tim Swanson

\*Treasurer:

Fausto Hinojosa

\*Secretary:

Doug Cords

\*Assistant Secretary:

Sherry Forath

\*Foundation Treasurer:

Fausto Hinojosa

\*Others Present:

Tom Ogden, Paul Harris Chair  
District Governor Elect August  
Hioco

Past Presidents:

Bob Bergin, By-Laws' Chair  
Rod Coburn  
Eric Fogderude  
John Heberger  
Marty Dietz

Past Foundation Treasurer Jeff  
Garza

The meeting was called to concurrent order, with the Regular Board Meeting of the Directors of The Rotary Club Of Fig Garden, by President Judy Case, at 7:00 a.m., in the Boardroom of the Stoughton Davidson Accountancy Corporation, 2520 West Shaw Lane, Suite 101, Fresno, California 93711.

\*TREASURER'S REPORT: (Fausto Hinojosa)

Due to the lengthy Executive Session within the Regular Board Meeting, the Treasurer's formal report was postponed until next month's meeting, with consent of the Board.

\*Accounts:

-Unrestricted Funds:	\$ 31,288.49
-Permanent Funds:	<u>348,071.23</u>
-Totals:	\$379,359.72

The above-noted amounts were as of 29 February 2008 and represent a decrease of 7.8% (\$31,983.04) from same month in the year 2007.

\*ADJOURNMENT: Concurrent With The Regular Board Meeting, President Judy Case adjourned the meeting at 9:03 a.m.

\*NEXT MEETING:: 23 April 2008

Respectfully Submitted By Sherry Forath, Assistant Secretary and Doug Cords, Ph.D., Secretary.

Fig Garden Rotary Foundation  
**Balance Sheet Prey Year Comparison**  
 As of February 29, 2008

	Feb 29, 08	Feb 28, 07	\$ Change	% Change
<b>ASSETS</b>				
Current Assets				
Checking/Savings				
Cash-UBS Money Market	26,516.73	25,587.32	929.41	3.6%
Cash-Union Bank Checking	4,276.03	29,504.93	-25,228.90	-85.5%
Total Checking/Savings	30,792.76	55,092.25	-24,299.49	-44.1%
Accounts Receivable				
Accounts Receivable	495.73	0.00	495.73	100.0%
Total Accounts Receivable	495.73	0.00	495.73	100.0%
Other Current Assets				
Permanent Fund	348,071.23	356,250.51	-8,179.28	-2.3%
Total Other Current Assets	348,071.23	356,250.51	-8,179.28	-2.3%
Total Current Assets	379,359.72	411,342.76	-31,983.04	-7.8%
<b>TOTAL ASSETS</b>	<b>379,359.72</b>	<b>411,342.76</b>	<b>-31,983.04</b>	<b>-7.8%/0</b>
<b>LIABILITIES &amp; EQUITY</b>				
Equity				
Fund Balance	483,908.87	434,623.87	49,285.00	11.3%
Net Income	-104,549.15	-23,281.11	-81,268.04	-349.1%
Total Equity	379,359.72	411,342.76	-31,983.04	-7.8%
<b>TOTAL LIABILITIES &amp; EQUITY</b>	<b>379,359.72</b>	<b>411,342.76</b>	<b>-31,983.04</b>	<b>-7.8%</b>





UBS Financial Services Inc.  
 FIG GARDEN FINANCIAL CENTER  
 5200 NO. PALM, SUITE 101  
 FRESNO, CA 93704-7669

APZ3001982263 0208 X1 FE 0

Business Services Account

# UBS Strategic Advisor

February 2008

00030862 02 AT 0.459 02 TR 00190 B301B044 100000 edg  
 FIG GARDEN ROTARY FOUNDATION  
 PERMANENT FUND  
 ATTN: FAUSTO HINOJOSA  
 677 SCOTT AVE  
 CLOVIS CA 93612-2659



Account name: FIG GARDEN ROTARY FOUNDATION  
 PERMANENT FUND

Account number: FE 31031 EG

Universal ID: 6783611107M

11.1.11.11.111.....11.11.1...1.1.11...1.1.1,11..ln.11.1.11.11.1

Your Financial Advisor:  
 EILAND GROUP  
 Phone: 559-226-2800/800-423-8797

Questions about your statement?  
 Call your Financial Advisor or the  
 ResourceLine at 800-762-1000,  
 account 095031031.

Visit our website:  
[www.ubs.com/financialservices](http://www.ubs.com/financialservices)

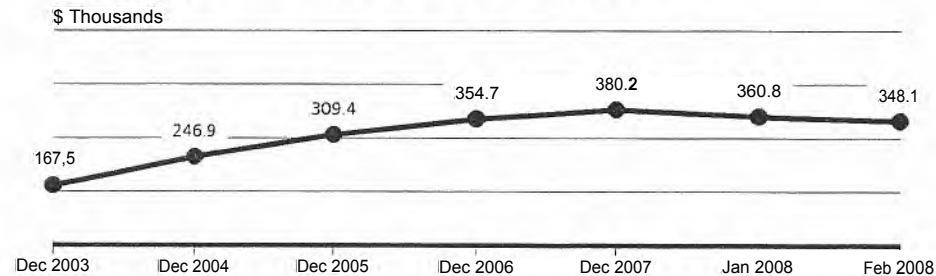
## Value of your account

	on January 31 (\$)	on February 29 (\$)
Your assets	360,792.93	348,071.23
Your liabilities	0.00	0.00
<b>Value of your account</b>	<b>\$360,792.93</b>	<b>\$348,071.23</b>

### Items for your attention

UBS is pleased to introduce your new redesigned statement. To learn more, please reference the guide included with this month's statement.

## Tracking the value of your account



### Sources of your account growth during 2008

Value of your account at year end 2007	\$380,214.70
Net amount you invested	-\$10,710.41
Your investment return:	
Dividend and interest income	\$1,202.69
Change in value of outside assets and accruals	\$85.08
Change in market value	-\$22,720.83
<b>Value of your account on Feb 29, 2008</b>	<b>\$348,071.23</b>



2:36 PM

03/25/08

Cash Basis

Fig Garden Rotary Foundation  
Profit & Loss Prey Year Comparison  
July 2007 through February 2008

	Jul '07 - Feb 08	Jul '06 - Feb 07	\$ Change	% Change
Income				
Auction	0.00	13,514.82	-13,514.82	-100.0%
Donation from Club	10,000.00	0.00	10,000.00	100.0%
Investment Income	-19,049.73	31,414.72	-50,464.45	-160.6%
KMJ Donation	0.00	5,000.00	-5,000.00	-100.0%
Other Donations	2,500.00	500.00	2,000.00	400.0%
Paul Harris Donations	9,600.00	13,990.00	-4,390.00	-31.4%
Rotary Intl Grant	0.00	2,000.00	-2,000.00	-100.0%
Total Income	3,050.27	66,419.54	-63,369.27	-95.4%
Expense				
Auction Expenses	652.08	3,403.82	-2,751.74	-80.8%
Community Service	81,811.56	69,137.91	12,673.65	18.3%
International Service Projects	7,000.00	0.00	7,000.00	100.0%
Investment Expense	2,158.34	2,003.92	154.42	7.7%
Other Expense	102.44	70.00	32.44	46.3%
Rotary International	9,875.00	15,085.00	-5,210.00	-34.5%
Scholarship	6,000.00	0.00	6,000.00	100.0%
Total Expense	107,599.42	89,700.65	17,898.77	20.0%
Net Income	-104,549.15	-23,281.11	-81,268.04	-349.1%

2:39 PM  
 03/25/08  
 Cash Basis

## Fig Garden Rotary Foundation

### Transaction Detail By Account

July 2007 through February 2008

Type	Date	Num	Name	Memo	Debit
<b>Community Service</b>					
Christmas Baskets					
Check	1/10/2008	1369	Karen McMillan	-MULTIPLE-	3,376.90
Total Christmas Baskets					3,376.90
<b>Community Service</b>					
Check	7/27/2007	1342	Tree Fresno		2,540.46
Check	8/2/2007	1343	Bullard High Jazz Combo		500.00
Check	8/22/2007	1344	Alisa Ann Ruch Burn Foundation	Tenant improvements at United Way	3,335.00
Check	9/28/2007	1359	Fire Chiefs Foundation		6,000.00
Check	9/28/2007	1360	Operation Boresnake		2,000.00
Check	9/28/2007	1361	Police Chiefs Foundation		1,000.00
Check	10/25/2007	1363	Marjaree Mason Center		2,800.00
Check	11/7/2007	1364	The Dictionary Project	Dictionaries approved by the board in Se...	2,815.20
Check	12/3/2007	1366	Walmart	Toys for Tots	1,500.00
Check	12/6/2007	1367	Fresno-Clovis Young Life		2,000.00
Check	12/6/2007	1368	Make-A-Wish Foundation of Central		5,000.00
Check	1/15/2008	1370	Assistance League of Fresno		1,000.00
Check	1/15/2008	1371	Boy Scouts of America		1,000.00
Check	1/15/2008	1372	Calif. State University Fresno Founda...		5,444.00
Check	2/8/2008	1376	Rotary Storyland & Playland		40,000.00
Total Community Service					76,934.66
Community Service - Other					
Check	2/29/2008	1381	Fresno Philharmonic		1,500.00
Total Community Service - Other					1,500.00
Total Community Service					81,811.56
<b>TOTAL</b>					<b>81,811.56</b>