

ROTARY CLUB OF FIG GARDEN

FOUNDATION

BOARD OF DIRECTORS

\*Regular Meeting: 23 July 2008 --

\*Members Present:

\*Directors:

Niko Argeres  
Erica Maranian  
Teresa Patterson  
Rod Rimmer  
Mark Roberts  
Wes Segal  
Dio Stefanopoulos

\*Secretary:

Doug Cords

\*Assistant Secretary:

Sherry Forath

\*Others Present:

\*President:

Tim Swanson

Foundation Chair Tom Ogden  
Past President Don Asperger  
Classification Chair John Ganahl

\*President-Elect:

Sasan, Rahmatian

\*Treasurer:

Scott Bristol

\*Foundation Treasurer:

Fausto Hinojosa

The meeting was called to concurrent order, with the Regular Board Meeting of the Directors of the Rotary Club Of Fig Garden, by President Tim Swanson, at 7:01 a.m., in the Boardroom of the Stoughton Davidson Accountancy Corporation at 2520 West Shaw Lane, Suite # 101, Fresno, California 93711.

\*TREASURER'S REPORT:

Treasurer Fausto Hinojosa reviewed with the Board the Balance Sheet and Profit And Loss, 2008 compared to 2007. There was a net loss (paper only) on investment income of \$66,892.88.

He then reviewed **the** composition and roles of the Investment Committee, including activity during the most recent Rotary year. The UBS Statements were then reviewed.

A question was posed regarding the Treasurer's perception of the role of UBS and his overall satisfaction. The response was favorable, and Club Treasurer Scott Bristol added that, overall, historically our investments have outperformed the market.

\*Accounts:

*Unrestricted Funds:	\$ 63,251.69
*Permanent Funds:	<u>353,764.30</u>
*Totals:	\$417,015.99

It was MSC to approve the Treasurer's Report, as presented.

\*ADJOURNMENT: Concurrent With The Regular Board Meeting, President Tim Swanson Adjourned The Meeting At 9:07 a.m.

\*NEXT MEETING: 27 August 2008

Respectfully Submitted By Sherry Forath, Assistant Secretary and Doug Cords, Ph.D., Secretary.

Fig Garden Rotary Foundation  
**Balance Sheet Prey Year Comparison**  
*As of June 30, 2008*

	Jun 30, 08	Jun 30, 07
<b>ASSETS</b>		
Current Assets		
Checking/Savings		
Cash-UBS Money Market	16,673.15	25,902.46
Cash-Union Bank Checking	46,082.81	77,467.11
Total Checking/Savings	62,755.96	103,369.57
Accounts Receivable		
Accounts Receivable	495.73	495.73
Total Accounts Receivable	495.73	495.73
Other Current Assets		
Permanent Fund	353,764.30	380,043.57
Total Other Current Assets	353,764.30	380,043.57
Total Current Assets	417,015.99	483,908.87
<b>TOTAL ASSETS</b>	<b>417,015.99</b>	<b>483,908.87</b>
<b>LIABILITIES &amp; EQUITY</b>		
Equity		
Fund Balance	483,908.87	434,623.87
Net Income	-66,892.88	49,285.00
Total Equity	417,015.99	483,908.87
<b>TOTAL LIABILITIES &amp; EQUITY</b>	<b>417,015.99</b>	<b>483,908.87</b>

3:22 PM

07/21/08

Cash Basis

Fig Garden Rotary Foundation  
Profit & Loss Prey Year Comparison  
*July 2007 through June 2008*

	Jul '07 - Jun 08	Jul '06 - Jun 07
<b>Income</b>		
<b>Auction</b>	57,649.00	97,244.88
<b>Donation from Club</b>	10,500.00	0.00
<b>Investment Income</b>	-22,538.03	56,196.20
<b>KMJ Donation</b>	0.00	5,000.00
<b>Other Donations</b>	2,500.00	500.00
<b>Other Income</b>	375.00	52.00
<b>Paul Harris Donations</b>	10,570.00	15,940.00
<b>Rotary Intl Grant</b>	0.00	2,000.00
<b>Team Donation</b>	450.00	1,010.00
<b>Total Income</b>	59,505.97	177,943.08
<b>Expense</b>		
<b>Auction Expenses</b>	9,481.93	22,116.76
<b>Bank Fees</b>	1,173.06	968.13
<b>Community Service</b>	83,892.10	84,554.05
<b>International Service Projects</b>	7,000.00	0.00
<b>Investment Expense</b>	2,820.55	2,683.20
<b>Other Expense</b>	346.21	70.00
<b>Rotary International</b>	10,685.00	17,335.00
<b>Scholarship</b>	10,000.00	0.00
<b>Team Expenses</b>	0.00	430.94
<b>Vocational</b>	1,000.00	500.00
<b>Total Expense</b>	126,398.85	128,658.08
<b>Net Income</b>	<b>-66,892.88</b>	<b>49,285.00</b>

3:27 PM

07/21/08

Cash Basis

Fig Garden Rotary Foundation  
**Transaction Detail By Account**  
 July 2007 through June 2008

Type	Date	Num	Name	Memo	Debit
Community Service					
Christmas Baskets					
Check	01/10/2008	1369	Karen McMillan	-MULTIPLE-	3,376.90
Total Christmas Baskets					3,376.90
Community Service					
Check	07/27/2007	1342	Tree Fresno		2,540.46
Check	08/02/2007	1343	Bullard High Jazz Combo		5 <sup>00</sup> .00
Check	08/22/2007	1344	Alisa Ann Ruch Burn Foundation	Tenant improvements at United Way	3,335.00
Check	09/28/2007	1359	Fire Chief's Foundation		6,000.00
Check	09/28/2007	1360	Operation Boresnake		2,000.00
Check	09/28/2007	1361	Police Chiefs Foundation		1,00 <sup>0</sup> .00
Check	10/25/2007	1363	Marjaree Mason Center		2,800.00
Check	11/07/2007	1364	The Dictionary Project	Dictionaries approved by the board in Sept. 2007	2,815.20
Check	12/03/2007	1366	Walmart	Toys for Tots	1,500.00
Check	12/06/2007	1367	Fresno-Clovis Young Life		2,000.00
Check	12/06/2007	1368	Make-A-Wish Foundation of Central CA		5,000.00
Check	01/15/2008	1370	Assistance League of Fresno		1,000.00
Check	01/15/2008	1371	Boy Scouts of America		1,000.00
Check	01/15/2008	1372	Calif. State University Fresno Foundation		5,444.00
Check	02/08/2008	1376	Rotary Storyland & Playland		40,0 <sup>00</sup> .00
Check	04/02/2008	1385	Valley Teen Ranch		500.00
Total Community Service					77,434.66
Interact Club					
Check	06/19/2008	1399	Bullard High Interact		1,000.00
Total Interact Club					1,000.00
Community Service - Other					
Check	02/29/2008	1381	Fresno Philharmonic	This check was lost so we reissued a new one on ...	0.00
Check	04/02/2008	1384	Fresno Philharmonic		1,500.00
Check	04/28/2008	1387	Bullard Sober Grad Knight	2008 Sober Grad - donation	580.54
Total Community Service - Other					2,080.54
Total Community Service					83,892.10
TOTAL					83,892.10



UBS Financial Services Inc.  
 FIG GARDEN FINANCIAL CENTER  
 5200 NO. PALM, SUITE 101  
 FRESNO, CA 93704-7669

APZ3001925655 0608 X245 FE 0

# UBS Strategic Advisor

June 2008

00031033 02 AT 0.471 02 TR 00182 B301 B044 010110 cpl  
 FIG GARDEN ROTARY FOUNDATION  
 PERMANENT FUND  
 ATTN: FAUSTO HINOJOSA  
 677 SCOTT AVE  
 CLOVIS CA 93612-2659



Account name: HG GARDEN ROTARY FOUNDATION  
 PERMANENT FUND

Account number: FE 31031 EG

Universal ID: 6783611107M

Your Financial Advisor:  
 EILAND GROUP  
 Phone: 559-226-2800/800-423-8797

Questions about your statement?  
 Call your Financial Advisor or the  
 P,esourceLine at 800-762-1000,  
 account 095031031.

Visit our website:  
[www.ubs.com/financialservices](http://www.ubs.com/financialservices)

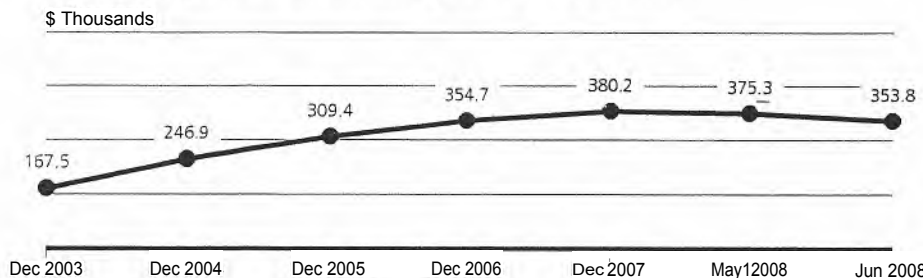
**Items for your attention**  
 Planning for retirement? Ask your  
 Financial Advisor about the numerous  
 financial strategies we offer and how they  
 can help you pursue the retirement you  
 envision.



## Value of your account

	on May 30 (\$)	on June 30 (5)
Your assets	375,257.24	353,764.30
Your liabilities	0.00	0.00
<b>Value of your account</b>	<b>\$375,257.24</b>	<b>\$353,764.30</b>

## Tracking the value of your account



### Sources of your account growth during 2008

Value of your account at year end 2007	\$380,214.70
Net amount you invested	-\$1,372.62
<b>Your investment return:</b>	
Dividend and interest income	\$4,976.93
Change in value of outside assets and accruals	-\$300.3 <sup>5</sup>
Change in market value	-\$29,754.36
<b>Value of your account on Jun 30, 2008</b>	<b>\$353,764.30</b>





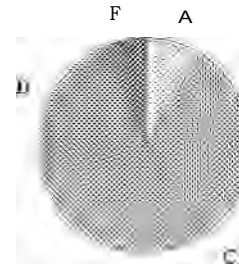
# Your account balance sheet

## Summary of your assets

	Value on June 30 (\$)	Percentage of your account
<b>A</b> Cash and money balances	30,111.82	8.51cY0
<b>B</b> Cash alternatives	0.00	0.00%
<b>C</b> Equities	216,20624	61.12%
<b>D</b> Fixed income	84,951.79	24.01 %
<b>E</b> Alternative strategies	0.00	0.00%
<b>F</b> Broad commodities	22,494.45	6.36%
<b>G</b> Real estate	0.00	0.00%
<b>H</b> Other	0.00	0.00%
<b>TotAI assets</b>	<b>\$353,764.30</b>	<b>100.00%</b>

Value of your account **\$353,764.30**

## Your current asset allocation



## Eye on the markets

Index	Percentage change	
	June 2008	Year to date
S&P 500	-8.43%	-11.91%
Russell 3000	-8.25%	-11.05%
MSCI - Europe, Australia & Far East	-8.16%	-10.58%
Lehman Brothers Aggregate Bond Index 10+ Yrs.	0.38%	-0.80%

### Interest rates on June 30, 2008

3-month Treasury bills: 1.86%

One-month LIBOR: 2.46%

Dr. Doug Cords  
Rotary Club Of Fig Garden

23 July 2008

BOARD SPLINTERS FROM THE JULY BOARD MEETING --

- \*Your 2008-2009 Board was seated, with strong attendance and great excitement for a productive Rotary year!
- \*President Tim's focus this year is two-fold: do wonderful things for others and have fun in the process - please give your considered thought to what role(s) you will play this year as a Fig Garden Rotarian. We exist to be a blessing to others!
- \*Look forward soon to your continuing invitation to Paul Harris Sustaining Program - Foundation Chair Tom Ogden diligently manages this key aspect of our Club's activities and we are leaders in opening our hearts and our checkbooks to those with need.
- \*Could Treasurer Scott Bristol really be able to add age and years of Rotary Service to total "85?" Say it isn't so.... Scott will be honored as "Rotarian Emeritus" at an upcoming meeting.
- \*Look for ,our January-June 2008 preliminary attendance numbers in AVENUES shortly. Please call Sherry Forath or Doug Cords with any corrections, as some Clubs do not submit make-ups and records are subject to recording errors.
- \*In August, we will have our traditional "100% Attendance Awards Ceremony," lauding those Members who had perfect attendance during Past-President Judy Case's year.
- \*Your Club's By-Laws Review Committee has been hard at work and extensive discussion took place at this Meeting regarding updates and/or proposed changes. After being duly noticed, we will have a Club vote on the proposals, after final ratification by your Board.
- \*Put on your calendar, please, 22 August - "The Great Fig Garden Rotary Club Duck Races" will take place at the home of Past President Don Asperger.
- \*Our year's District Conference is 5-7 June 2009, in Seaside. It is our opportunity to show strong support for our own District Governor August Hioco. The rate at the hotel, including breakfast and Happy Hour, is \$159./night. Please call 1-800-Embassy and use reservation code RIG for your spot.
- \*As our Rotary Year begins, it is our awesome opportunity to give a little more, serve a little better and receive a huge internal smile for our efforts - so many people count upon us.... this is the time to step forward and make it happen!