

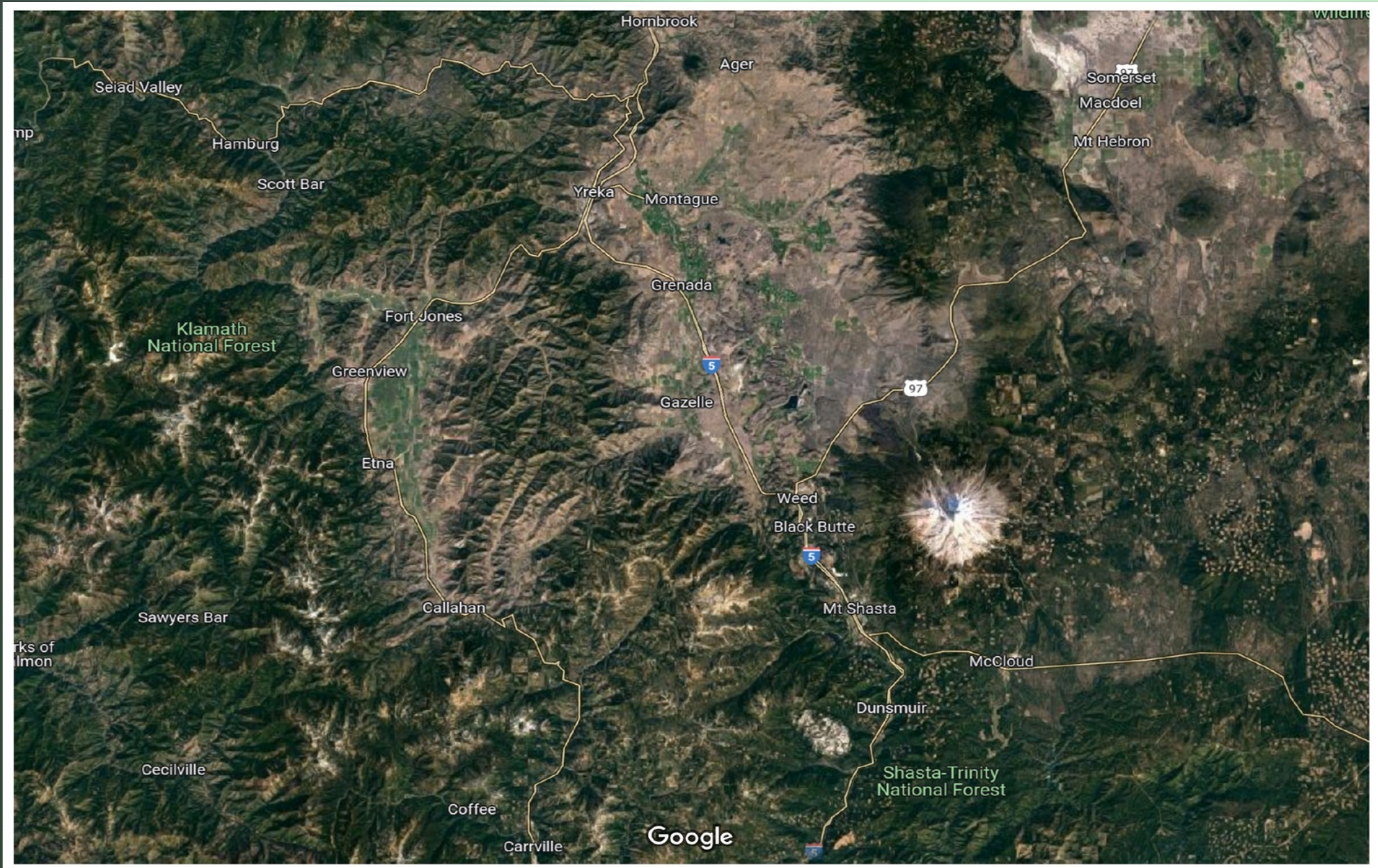
June 15, 2022

Mt. Shasta Rotary Club

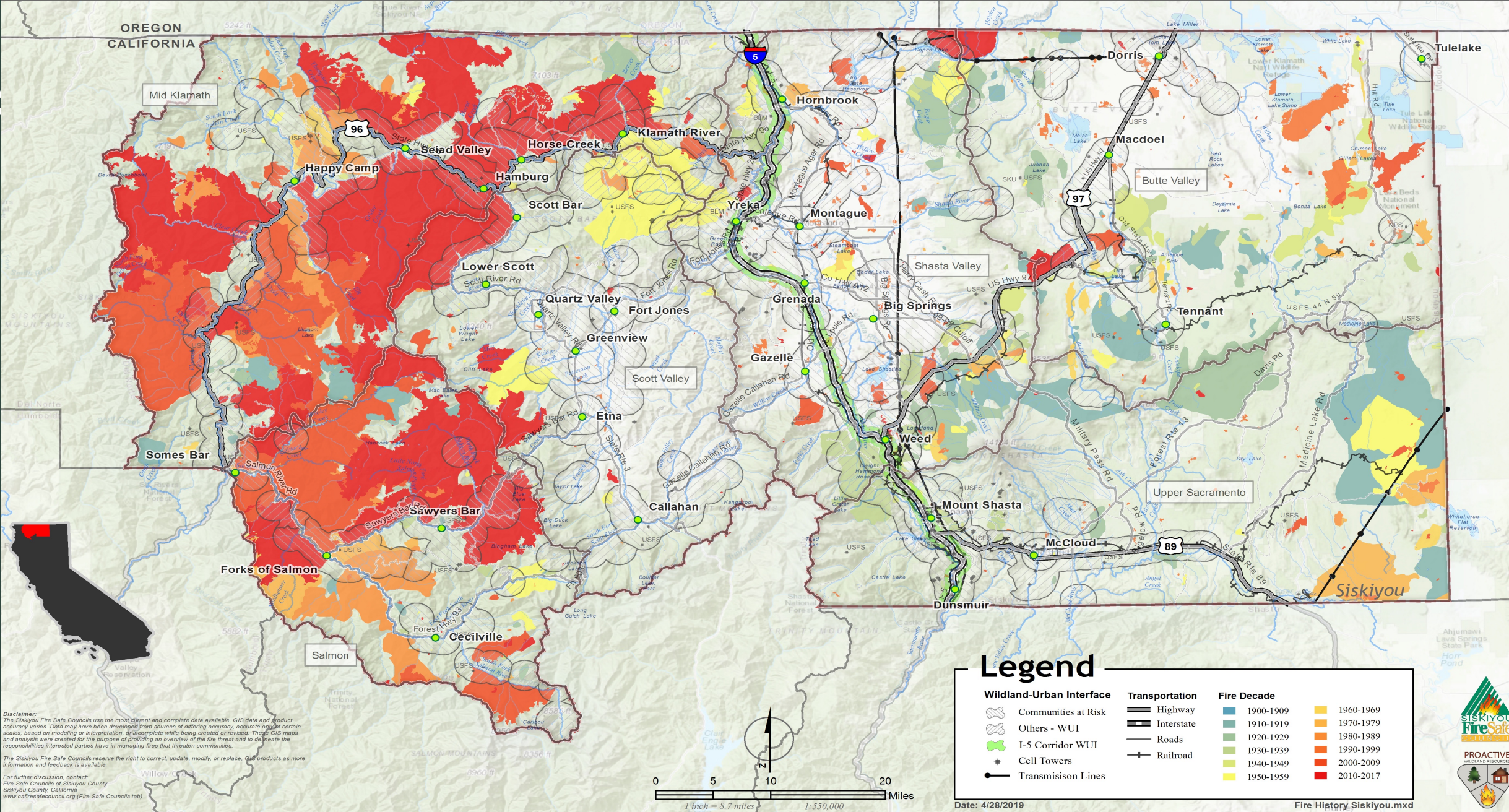
Wildfire Preparedness

Julie Titus

Aerial
Terrain
View:
Large
Portion of
Siskiyou
County



Siskiyou County Fire History



Boles
Fire
Weed
Sept
15
2014



Boles Fire
Weed

Aftermath

150
Structures
Destroyed
516 Acres
Burned



Klamathon Fire

July 5, 2018

Hornbrook

81 Structures
destroyed

38,000 acres



Delta Fire

Sept. 5,
2018

I-5: N. of
Lakehead

20 Structures
Destroyed

63,311 Acres



Lava Fire

June 25,
2021

23
Structures
Destroyed

26,409 Acres



axis-hammondbranch elev:5709' X:+39.39 Y:-2.26 Z:1.0 CalFireSKU.cmccormick.06-28T14:21 © NV Seismo Lab 2021/06/28 15:02:00.51 ALERTWil

Lava Fire
Behavior:
Approaching
Hwy 97 from
South

Pinyon-Sage-
Juniper &
old-growth
chaparral



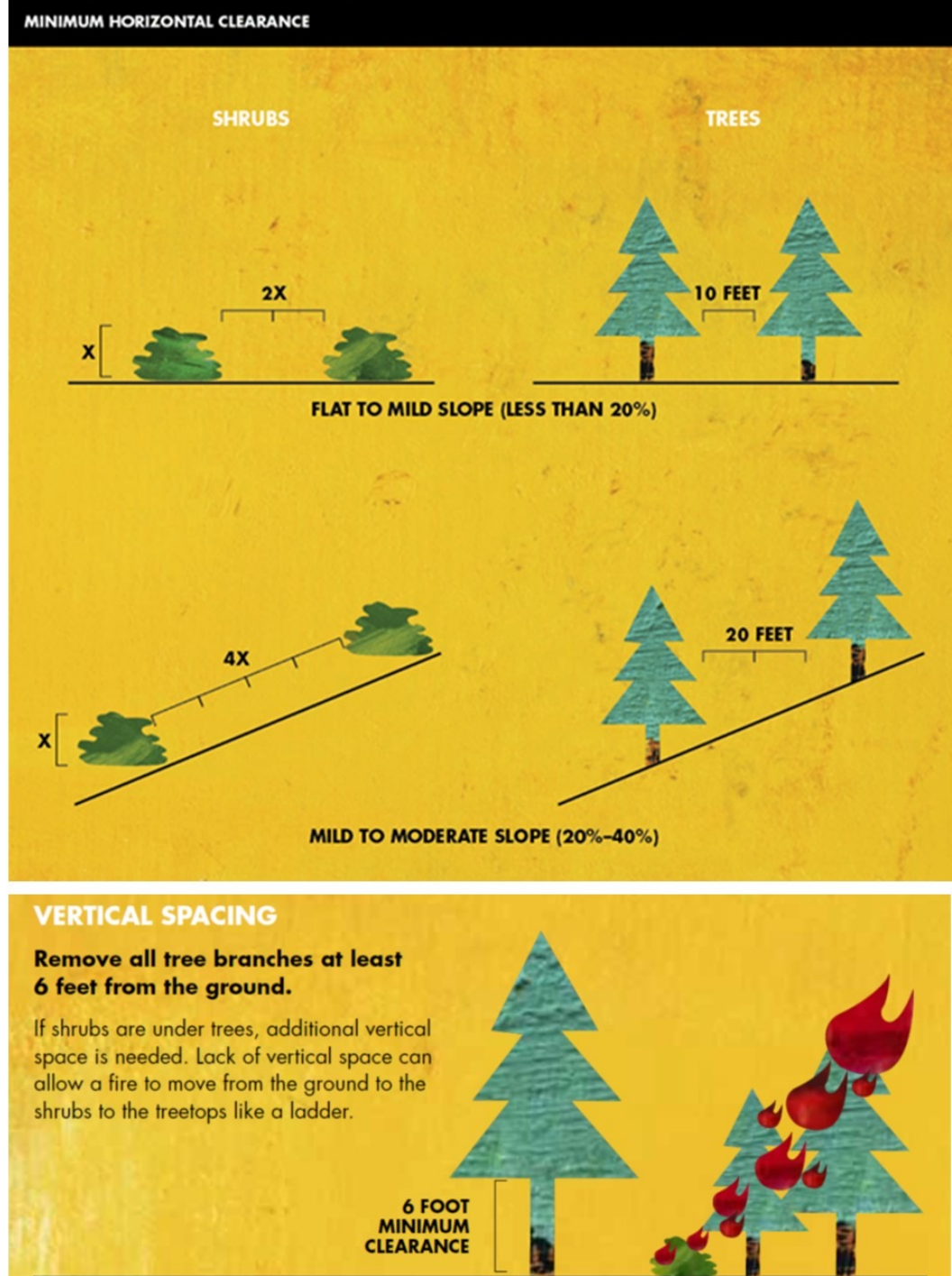
Lava Fire
Crossing
Hwy 97



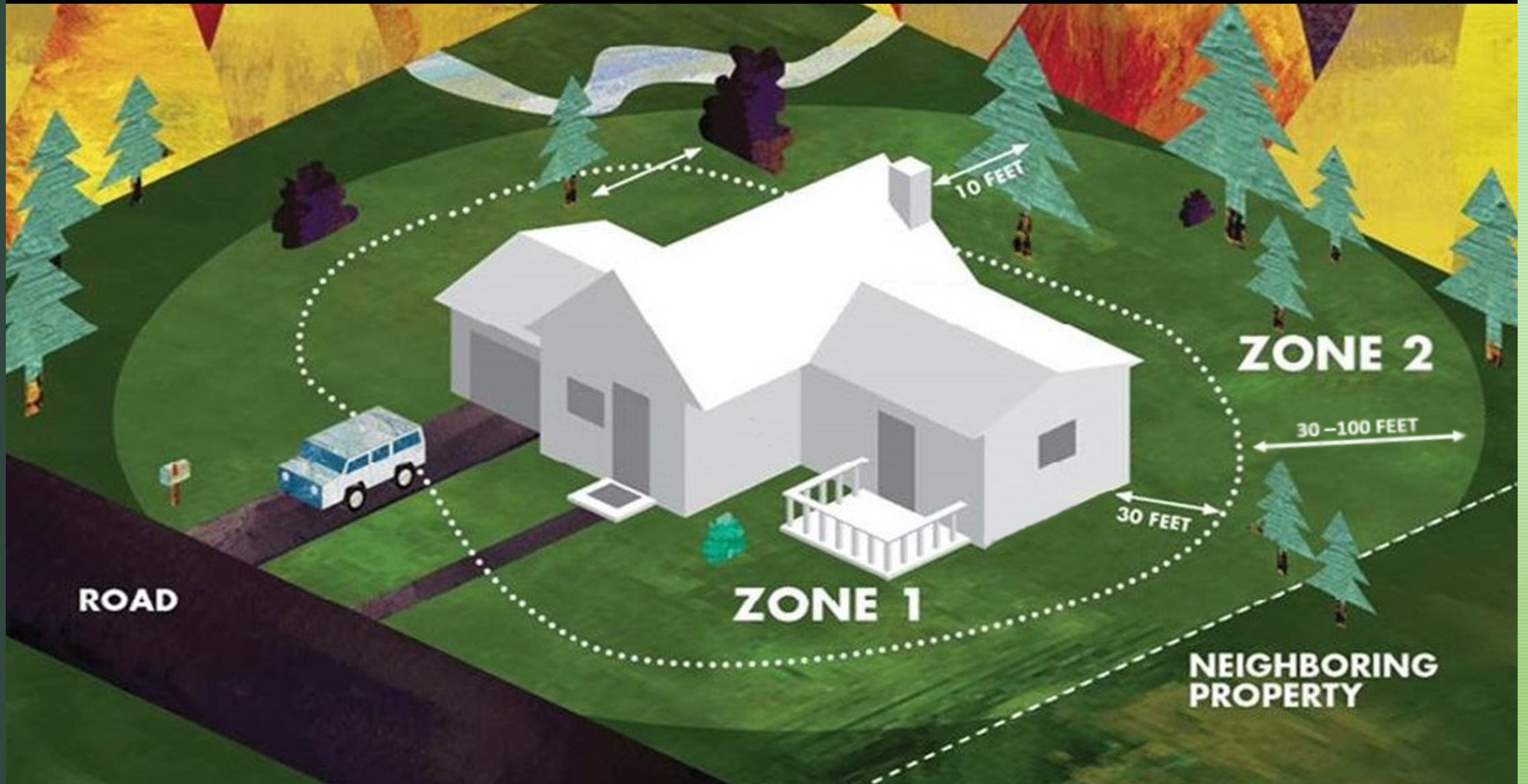
Defensible Space and Home hardening Guidance – CAL FIRE

Ready Set Go

See: [Readyforwildfire.org](https://www.readyforwildfire.org)



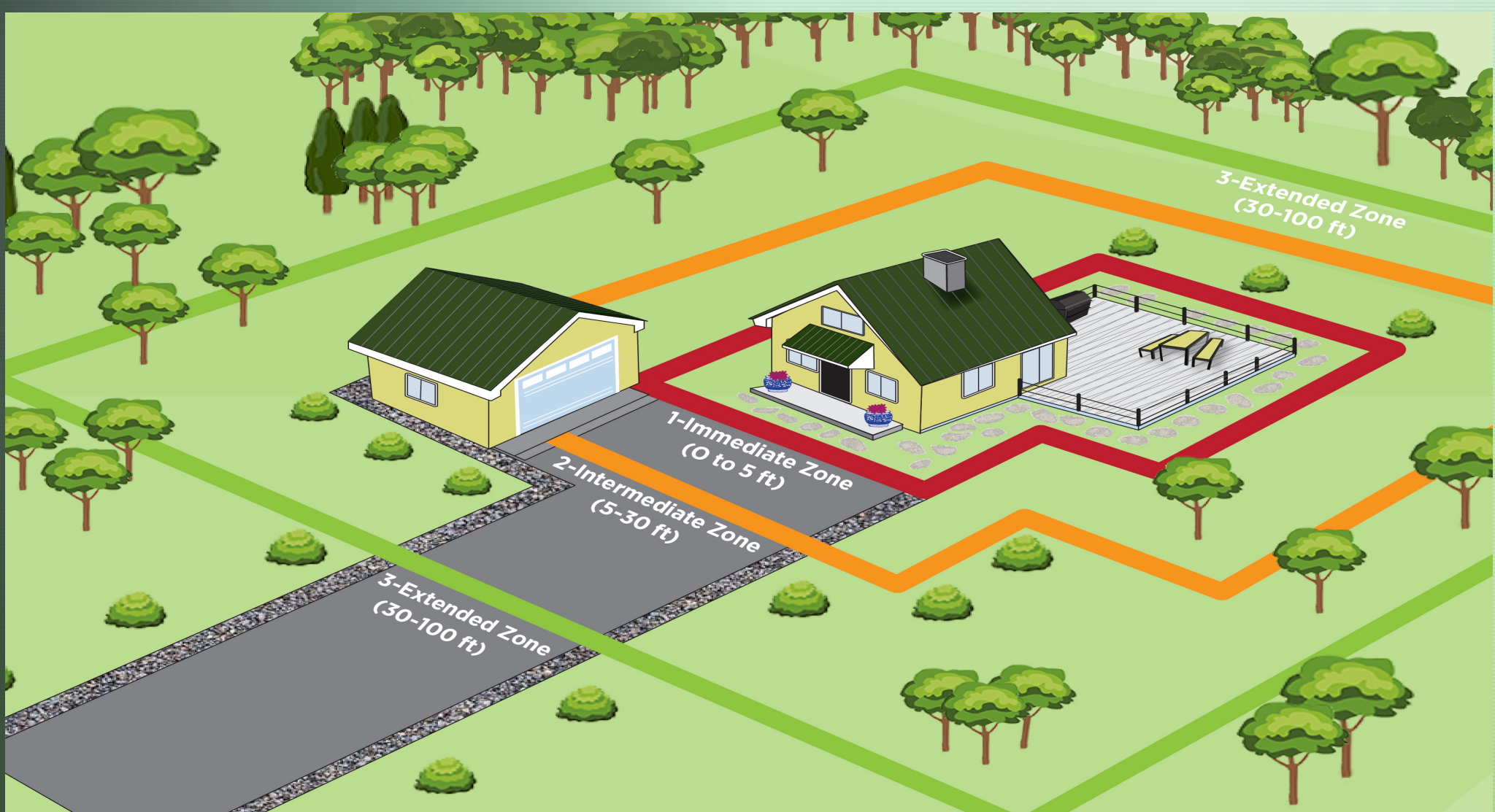
DEFENSIBLE SPACE ZONES



3 Zones:
"0" Zone =
0-5 ft

Intermediate
Zone =
5 – 30 ft

Extended
Zone =
30 – 100 ft.



1 – Immediate Zone (0 to 5 ft):

Install noncombustible ground cover. Use fire-resistant or noncombustible materials for decks, porches, railings, or fences that attach to the home.

2 – Intermediate Zone (5-30 ft):

Plant trees no closer than 30 feet to the home. Space tree crowns 18 feet apart or further on slopes. Trim branches up to 6 to 10 feet from ground and at least 10 feet from structures.

3 – Extended Zone (30-100 ft):

Remove vegetation next to outbuildings. For trees 30 to 60 ft from the home, space so mature canopies are at least 12 feet apart; for 60 to 100 feet from the home, space so tree canopies are at least 6 feet apart.

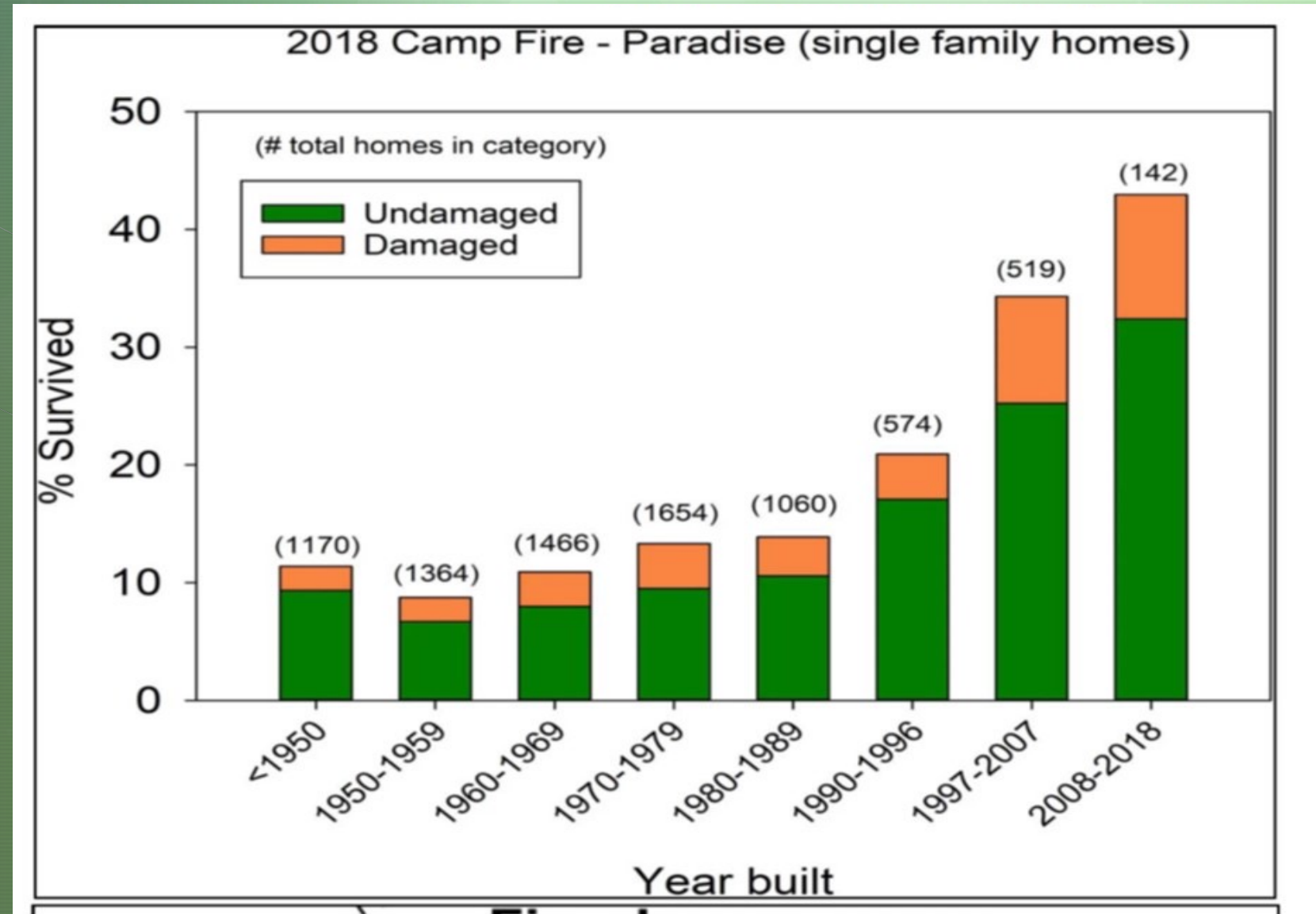
Camp Fire, Paradise Ca. Nov 8, 2018. Study Results, single family home survival

Deadliest & most destructive in Ca history.

85 lives lost

18,800 structures lost

153,336 acres)



2021 Northern CA Fire Stats:

1. Lava – June 25: 26, 26,409 acres (Siskiyou Co)
2. Tennant – June 28: 10,580 acres (Siskiyou Co)
3. Salt – July 19, 12,660 (Shasta Co)
4. Beckworth Complex – July 3, 105,670 ac (Plumas/Lassen)
5. Dixie – July 13, 963,309 ac (Butte, Lassen, Plumas , Shasta, Tehama)
6. Monument – July 30, 223,124 acres (Trinity)
7. River complex – July 30. 199,359 acres (Trinity, Siskiyou)
8. McCash – July 31. 94,962 acres (Siskiyou)
9. Antelope – August 1. 145,362 acres (Siskiyou)
10. Caldor – August 15. 221835 ac (El Dorado, Almador, Alpine)

Local Fuels
Problem;
including
scale and
extent

Awareness
is critical.
Action are
needed.

Off Gateay trail
adjacent to homes
along RR tracks



Example
Manzanita
Fuels
Hazard
reduction



**Residential
Pine Stand
Unthinned**



**Residential
Pine Stand
Thinned**



Wildfire Evacuation Guidance

CAL FIRE

Ready Set Go

See:
[Readyforwildfire.org](https://readyforwildfire.org)

WHEN TO EVACUATE

Leave as soon as evacuation is recommended by fire officials to avoid being caught in fire, smoke or road congestion. Don't wait to be ordered by authorities to leave. Evacuating early also helps firefighters keep roads clear of congestion, and lets them move more freely to do their job. In an intense wildfire, they may not have time to knock on every door. If you are advised to leave, don't hesitate!

- Officials will determine the areas to be evacuated and escape routes to use depending upon the fire's location, behavior, winds, terrain, etc.
- Law enforcement agencies are typically responsible for enforcing an evacuation order. Follow their directions promptly.
- You will be advised of potential evacuations as early as possible. You must take the initiative to stay informed and aware. Listen to your radio/TV for announcements from law enforcement and emergency personnel.
- You may be directed to temporary assembly areas to await transfer to a safe location.

The terms "Voluntary" and "Mandatory" are used to describe evacuation orders. However, local jurisdictions may use other terminology such as "Precautionary" and "Immediate Threat." These terms are used to alert you to the significance of the danger. All evacuation instructions provided by officials should be followed immediately for your safety.

Evacuation
Routes are of
the Highest
Priorities.

Know your
Routes

Take proactive
Actions to
make them
safe for travel

Camp Fire, main route,
Paradise



July 19,
2019

Do you
recognize
these local
travel
corridors?



Awareness + Proactive Preparation:

- Wildfire awareness through education about fire and fuels
- Prepare your home and defensible space
- Work with neighborhood, local FD and/or CAL FIRE on evacuation route issues
- Have your evac boxes ready (important papers, pets, meds, irreplaceable items/valuables etc)

These are a few simple starters – there are resources and lists online to assist you!

All the best to you and yours for a safe summer!

➤ 3 websites with important information :

Siskiyou County OES

- Sign Up For **Code Red** Alerts ASAP

<https://www.co.siskiyou.ca.us/emergencyservices>

CAL FIRE

- <https://www.readyforwildfire.org/prepare-for-wildfire/ready-set-go/>

Fire Safe Council Siskiyou County

- <https://firesafesiskiyou.com/>