



STATE OF THE CITY
MAYOR KENT STUDEBAKER

March 23, 2015

2014 COUNCIL GOALS

1. Financial

- Review master fees and charges
- Update the Council's policy on debt
- Complete the 2013 Action Plan to sell the WEB

2. Aesthetics

- Complete the 2013 Action Plan for updating the Comp. Plan
- Adopt changes to the Development Code to implement Sensitive Lands Code changes
- Amend the tree code to address large land parcels
- Long term - convene a community dialog on the tree code

3. Infrastructure


- Invest in a street maintenance program that will get to a Pavement Condition Index of 70
- Adopt a design and funding strategy for improving Operations Center
- Develop a financially feasible program for a community facility in Lake Grove
- Complete new or expanded Police/LOCOM facility.



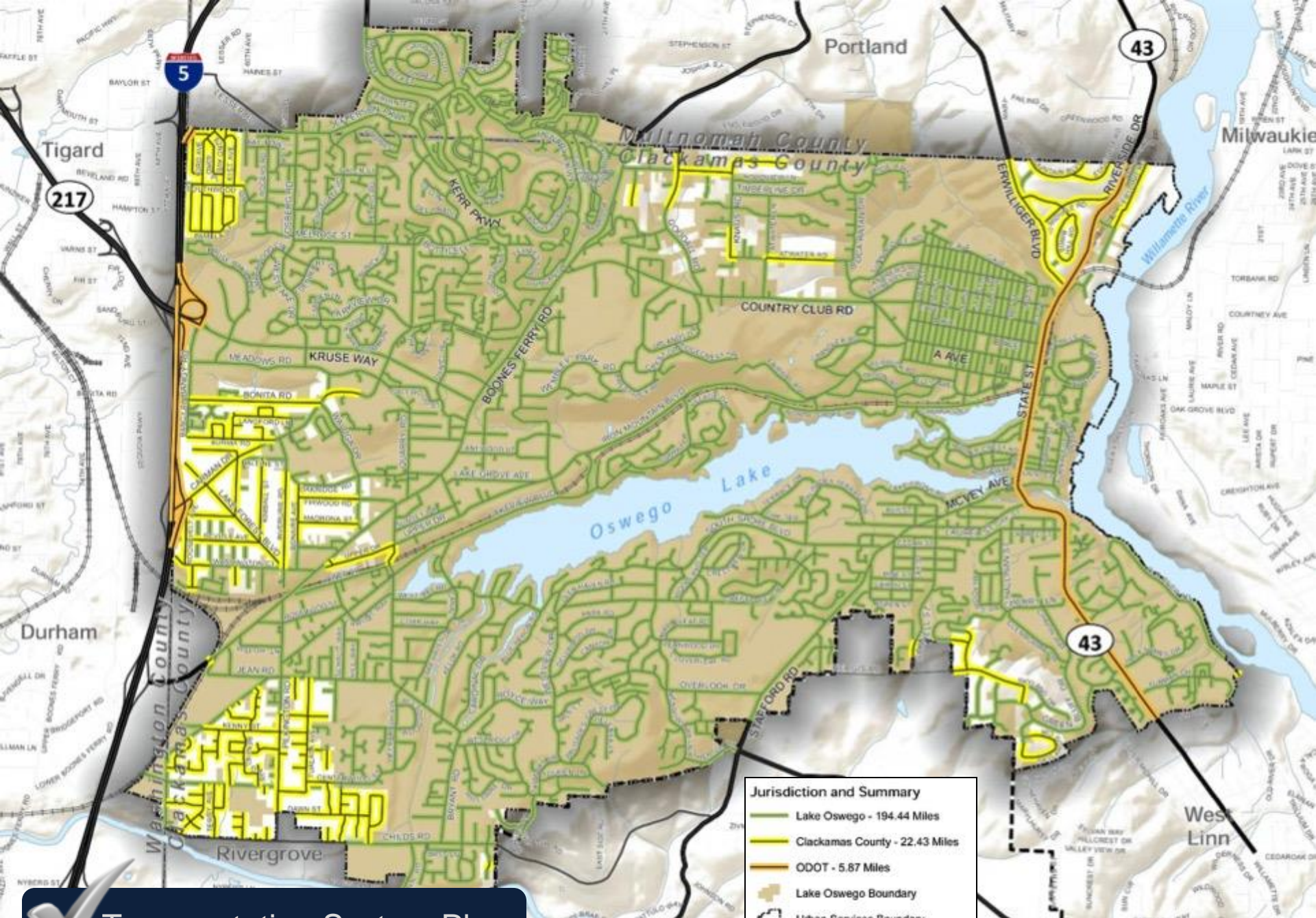
SO, HOW DID WE DO?





 Comprehensive Plan

- 
Community Health & Public Safety
- 
A Connected Community
- 
Community Culture
- 
Complete Neighborhoods & Housing
- 
Economic Vitality
- 
Healthy Safe People
- 
Inspiring Spaces & Places



Jurisdiction and Summary

- Lake Oswego - 194.44 Miles
- Clackamas County - 22.43 Miles
- ODOT - 5.87 Miles
- Lake Oswego Boundary
- Urban Services Boundary
- UGB (Metro)



Transportation System Plan



Sensitive Lands Program



Block 137 (Wizer)

PROPOSED NORTH ANCHOR SITE

B AVENUE

A AVENUE

STATE STREET / HWY 43

2ND STREET

1ST STREET

LAKEVIEW VILLAGE

EVERGREEN RD

MILLENNIUM PLAZA



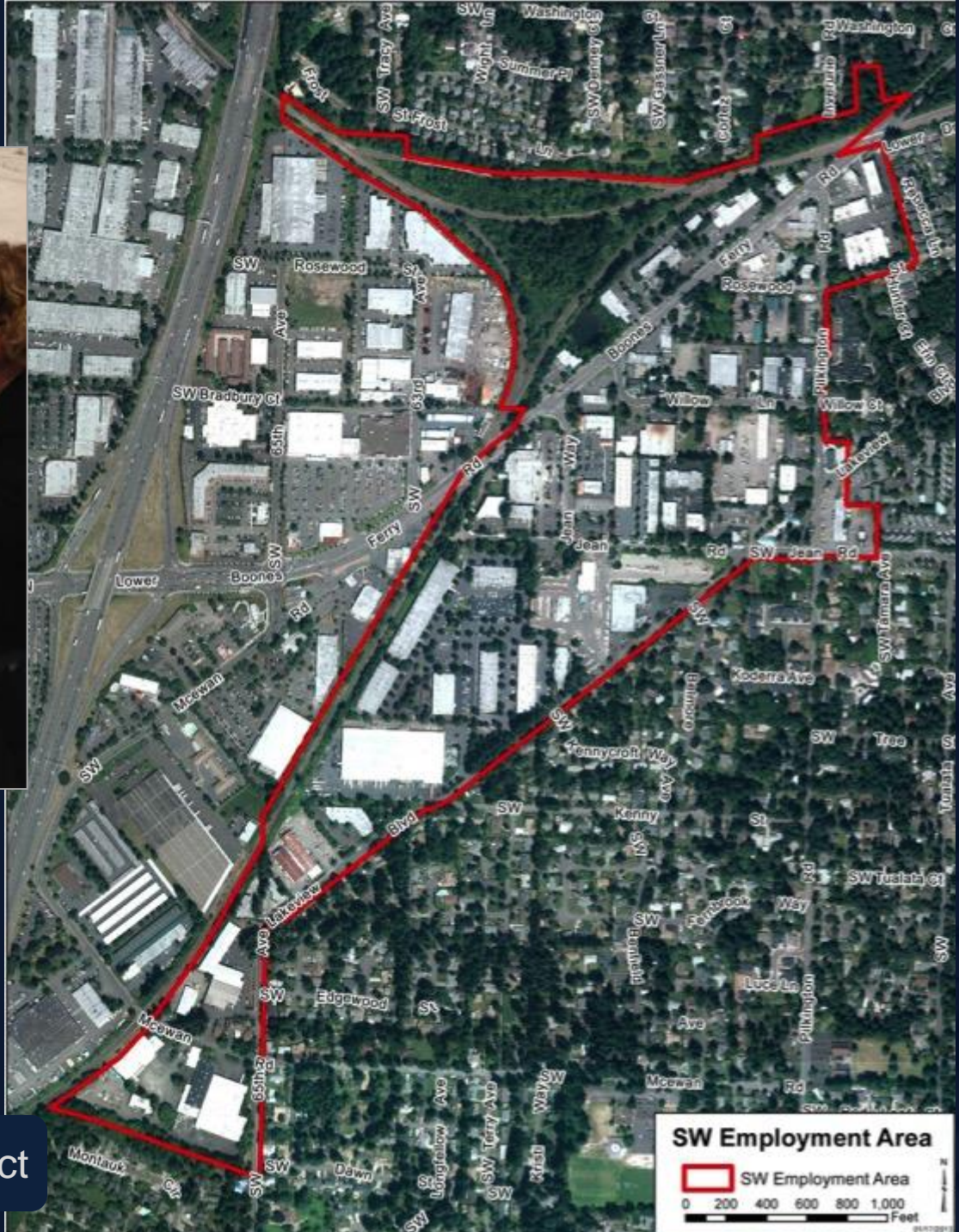
North Anchor



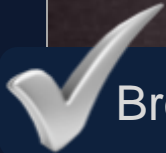
West End Building

SW Daniel Way

SW Kruse Way (31,000+ ADT)



SW Employment District



Broadband Fiber





LOTWP – Waluga Reservoir 2



Council Vacancy Policy

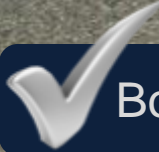


Volunteer Coordinator



Kerr Pkwy

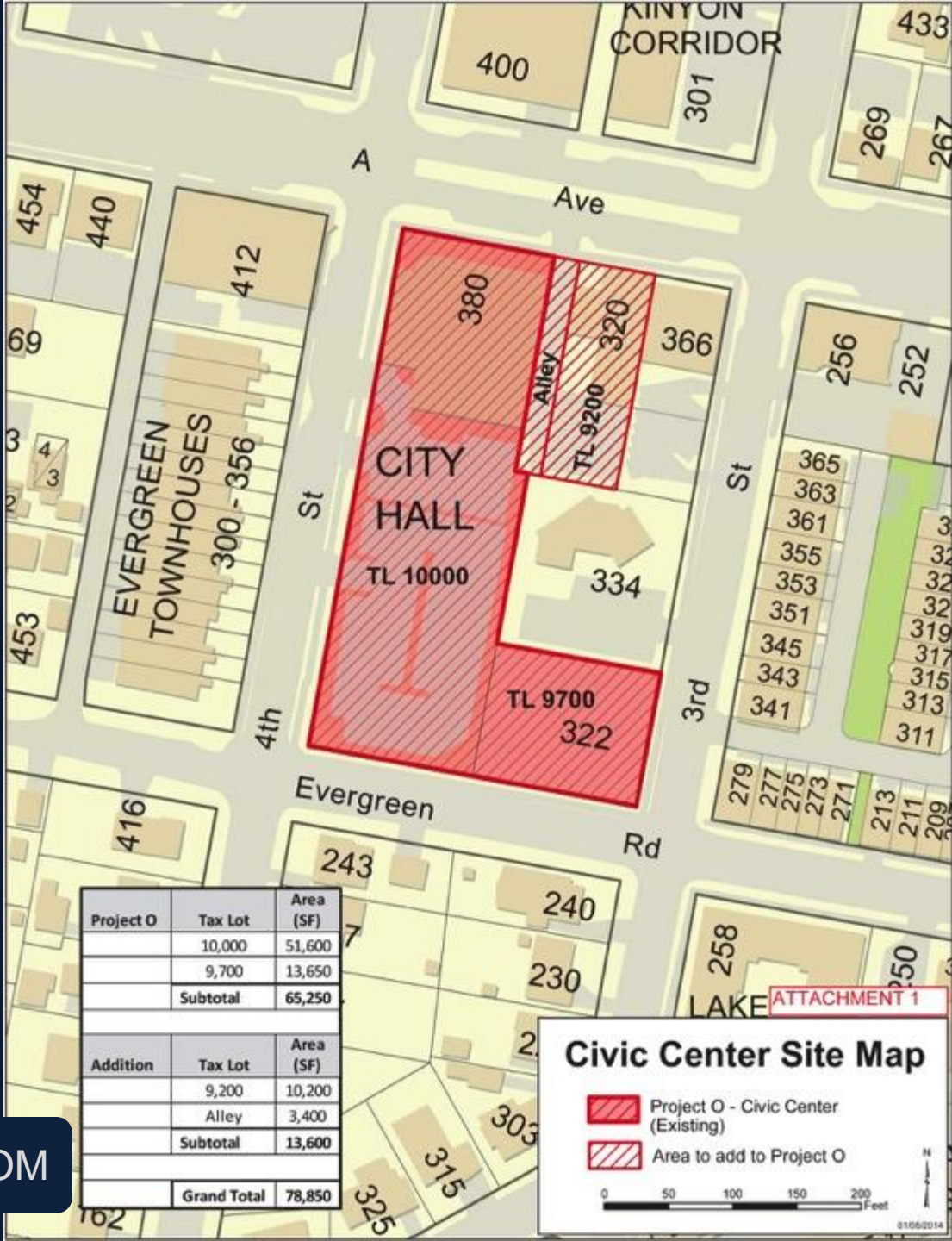
✓ Kerr Parkway



Boones Ferry Improvement



Operations Center



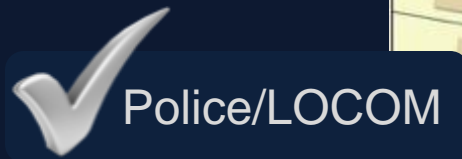
Project O	Tax Lot	Area (SF)
	10,000	51,600
	9,700	13,650
	Subtotal	65,250
Addition	Tax Lot	Area (SF)
	9,200	10,200
	Alley	3,400
	Subtotal	13,600
	Grand Total	78,850

Civic Center Site Map

- Project O - Civic Center (Existing)
- Area to add to Project O

0 50 100 150 200 Feet

©10/02/2014



ATTACHMENT 1

WHAT ARE OUR PRESENT GOALS?

1. Finish the Sensitive Lands Revisions
2. Convene a city discussion and move forward on Tree Code revision
3. Continue to improve infrastructure
4. Streamline the Development Code
5. Develop plans for the North Anchor and SW Industrial area
6. Improve the effectiveness of the LO City government





Steady Progress



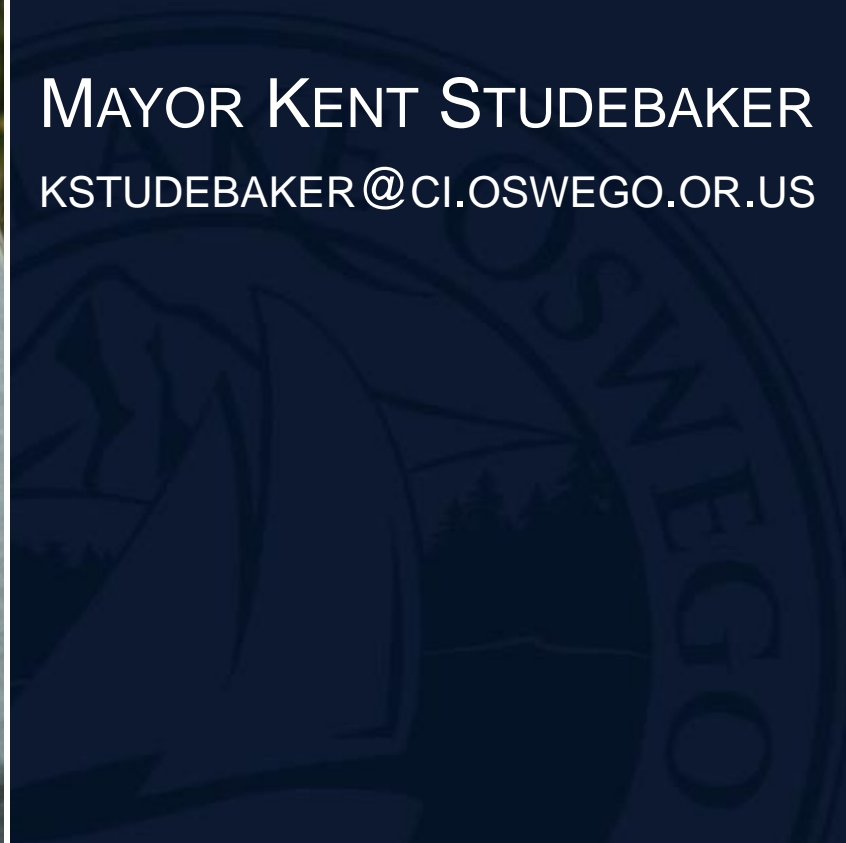
Scott Lazenby and Sandy



QUESTIONS?

MAYOR KENT STUDEBAKER

[KSTUDEBAKER@CI.OSWEGO.OR.US](mailto:kstudebaker@ci.oswego.or.us)



END

