

# Brian Bice

- Born: Peoria, Illinois
- Date: During the Truman Administration
- Education: University of Missouri, School of Journalism, 1971
- Career:
- Columbia Records & RCA Records – 1969-1974
- Magazine Publishing
  - 1974 - 1975: W Magazine
  - 1976 – 1977: Rolling Stone
- Advertising Agency Account Executive – Beringer Wines 1978-1980
- Jordan Education Media –1980 – 2008
- Benefit Auctioneer – 2008 – Present
- Moved to Lake Oswego - 1992
- Married: Carmen, 1977, Malibu, California
- Two Sons: Jeremy, 32 and Jordan, 27
- Committee Chair: Youth Services

# Brian Bice – 2 Truths & 1 Lie

- I once had breakfast with movie director George Lucas at Skywalker Ranch.
- I once had lunch with Hugh Hefner at the Playboy Mansion.
- I once had dinner with Lesley Ann Warren in Beverly Hills.



GREETINGS

HI

WELCOME

HELLO

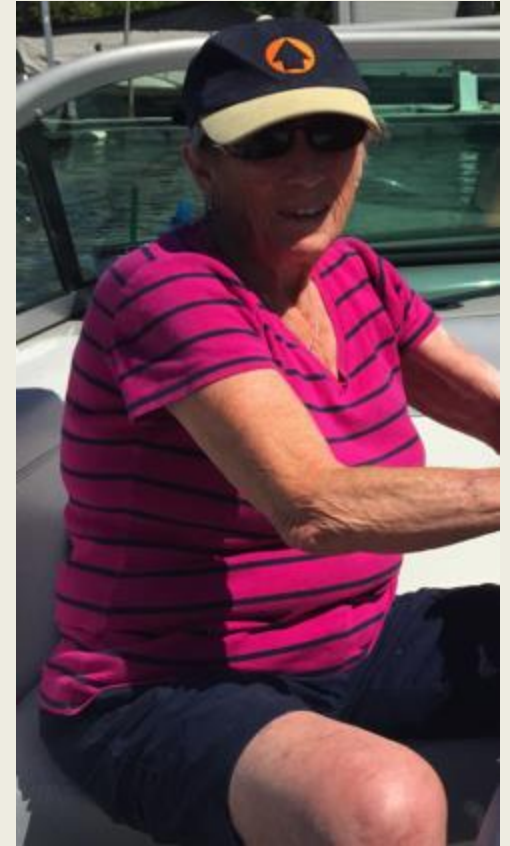
HOWDY

GLAD YOU'RE HERE

LAKE OSWEGO ROTARY – FORMED AUGUST 29, 1958



Thanks to Barbara and Hosts: Joyce,  
Martha, Eric, and Scott!



# 1<sup>st</sup> week of September – Let's do it!

- First Tuesday – tomorrow 9/1 @ Tavern on Kruse 4:00
- Youth Services Comm Mtg – Wednesday, 9/2 @ The Stafford, 5:30
- NO MEETING NEXT MONDAY – LABOR DAY!
- Community Serv Comm – 9/9, 5:30 @ OHH
- Habitat & Farmer's Mkt – 9/12

# Habitat for Humanity – Sept 12

## Campbell Native Garden – Sept 19



# Bill Warner – Street of Dreams Observations



*Joie de Vivre*  
BRIAN SCHMIDT BUILDER



# Nell Diamond ERK Completion!

This eight month course covers the following nine subjects:

- History of Rotary International
- Organization of Rotary International and District 5100
- The Rotary Foundation (TRF)
- Club Service
- Community Service
- Vocational Service
- International Service
- Membership Development and Retention
- New Generation

# Where's Skip Barnhart?

- Camino de Santiago – 500 mile trek begins today!
- \$3,915.00 pledged so far!



# Willamette Rotaract PANhandling for Polio



**Saturday, September 12<sup>th</sup>**

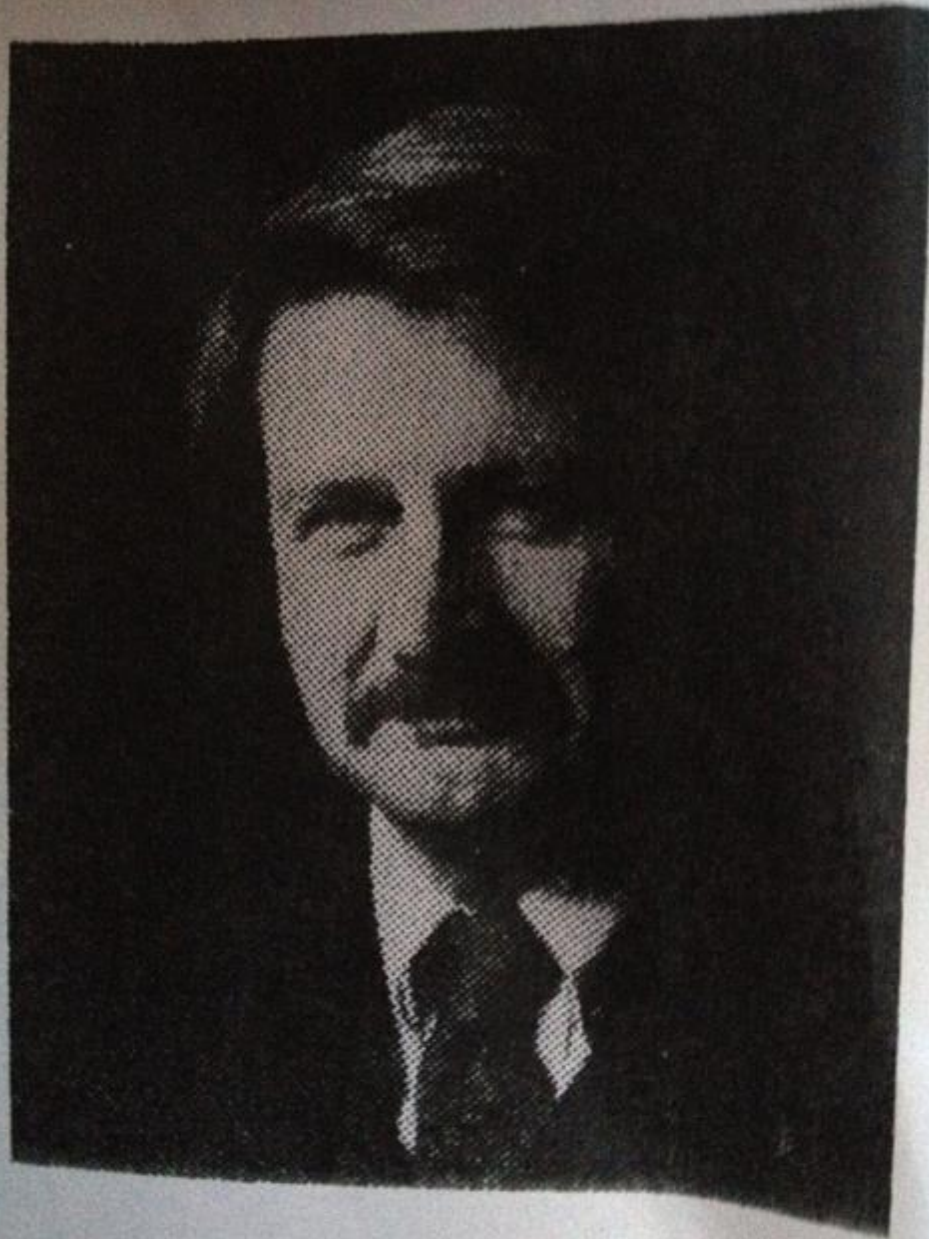
**9am – 11am**

Volunteers: Meet at  
Einstein Bros Bagel in  
Beaverton Town Square  
at 8:45am

Sign up here:

<http://bit.ly/1LDZipZ>

To donate: We are stationed at  
217 exits for SW Canyon Rd. &  
Beaverton Hillsdale Hwy.



Bill Korbach



2012/07/30 06:30

RENO-TAHOE