



# US Coast Guard Barque Eagle



*America's Tall Ship*

# USS Portland LPD27

Astoria to Portland



Commissioned Saturday April 21, 2018



# Humanitarian, Disaster Relief, Combat

## Landing Platform Dock LPD27

### ABOUT OUR SHIP

#### SPECIFICATIONS:

LENGTH 684 FT.  
DISPLACEMENT APRX. 25,000 TONS  
BEAM 105 FT.  
DRAFT 22 FT.  
AIR DRAFT 157 FT.  
CREW 371  
MARINES 500-800

#### MEDICAL:

24 PERSON HOSPITAL WARD  
2 OPERATING ROOMS  
2 DENTAL OPERATING ROOMS

#### WEAPONS:

2 RAM ANTI-AIR MISSILE SYSTEMS  
2 30MM ANTI-SURFACE GUNS  
9 50CAL ANTI-SURFACE MACHINE GUNS

#### SHIPBUILDER

INGALLS  
CHRISTENING PASCAGOULA, MS  
COMMISSIONING PORTLAND, OR

#### ENGINEERING:

2 SHAFTS  
4 TURBO-CHARGED MARINE DIESELS

#### CARGO

VM-22 TILT-ROTOR (OSPREYS)  
LANDING CRAFT - AIR CUSHION (LCAC)

"The two previous ships to bear the name Portland distinguished themselves in service to our nation and I fully expect the future USS Portland will continue that proud tradition whether delivering humanitarian assistance or the full range of combat capability for many decades to come."

- Navy Secretary Ray Mabus

### USS Portland

24 bed hospital  
4 operating rooms



# USS Hornet CVS-12



1943 – 1970

Apollo 11 & 12 recovery

1998 Museum Alameda, CA



Far east cruise 1959





# US Coast Guard Barque Eagle

## WIX 327 NRCB

295 feet long  
39 feet beam  
Steel hull ½"  
1700 tons  
16 foot draft  
23 sails  
192 lines

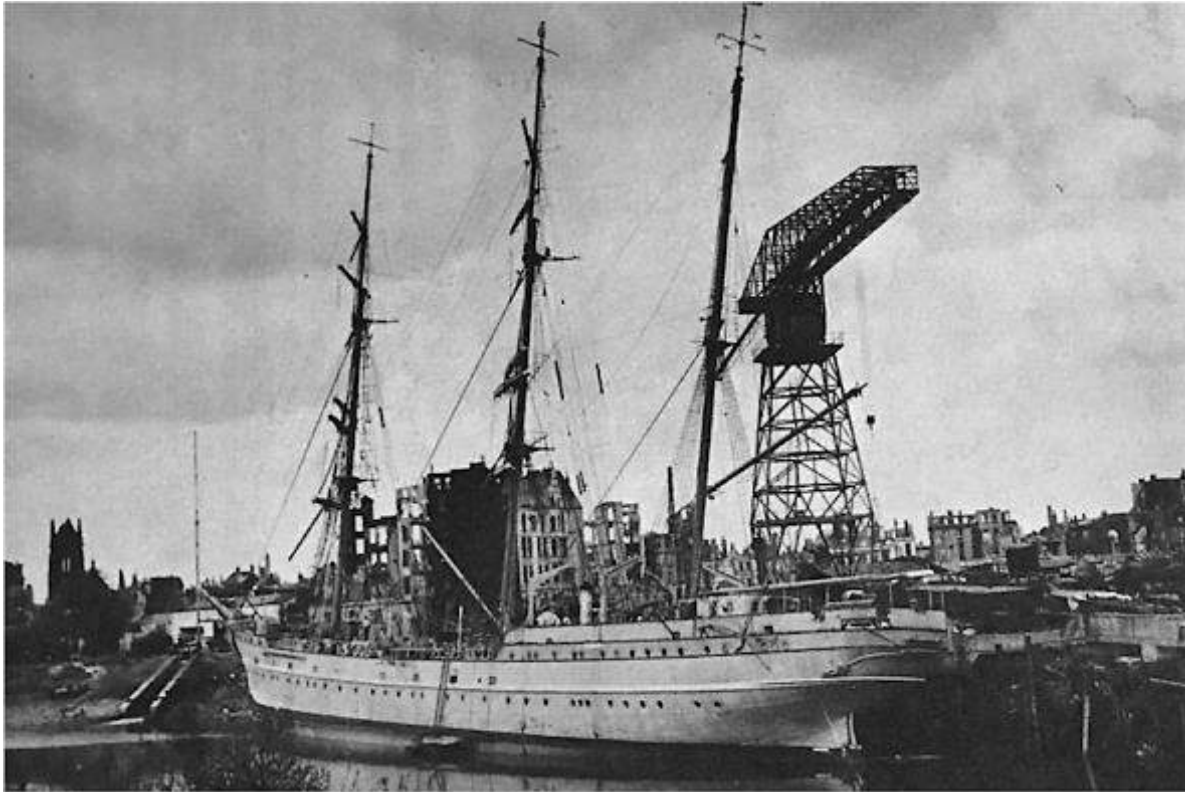
50 full time crew  
150 trainees



17 knots under sail (20mph)

11 knots under power

# Horst Vessel 1936



Training  
Transport  
Anti-Aircraft



Hitler aboard 1938

Blohm and Voss  
Hamburg, Germany

Bismarck builders



# 1946 World War II Reparation



Bremerhaven, Germany



USCG Captain  
Gordon McGowan



Commissioned May 15, 1946  
**US Coast Guard Eagle**

5 months of repairs  
Sails, lines, rudder, paint

# 1946 Bremerhaven



Bremerhaven  
Falmouth, UK  
Funchal, Madeira  
Bermuda  
New York  
New London, CT

*May 30 – July 9*



7 USCG Officers and 55 crew  
9 German officers and 40 crew



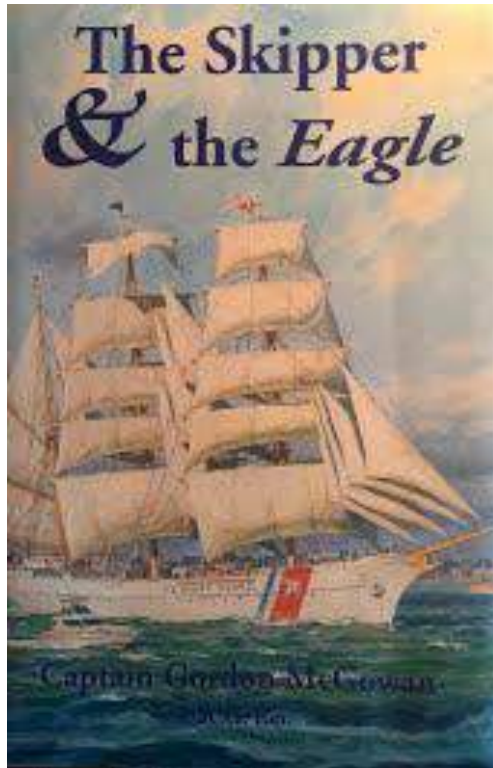
- Kapitänleutenant Schnibbe
- Captain McGowen



German crew



# The Skipper & the Eagle



Published 1960 & 1998



USCG Captain  
Gordon McGowan

Author



Afterword by  
Admiral Robert Pap

Former Captain of the Eagle  
Sailed to Germany 1996



Sea stories with German crew

# Based New London, CT Coast Guard Academy



## Two missions

- Training
- Public relations



# Presidential Visits

The Eagle has hosted Presidents Kennedy and Truman



9/20/1952



9/15/1962



# My trips

August 19-30, 2015

Portsmouth VA - **Baltimore Inner harbor**

March 17-29, 2016

**Savanna** to Baltimore Curtis Bay

April 29-May 5-2017

Little Creek, VA to **New London, CT**

August 11-18, 2017

**Pier 86 NYC** to Little Creek, VA



# Portsmouth, VA





Requesting permission to come aboard, Sir!



Cadet Cruises for 70 years  
Ports of call worldwide



# Eagle's Crew



7 officers, 50 enlisted  
+150 Cadets  
6 to 8 weeks aboard in 4 years

Captain Matt Meilstrup



## Host the sails





## 23 Sails

Royal

Topgallent

Upper topsail

Lower topsail

Course



Diesel Power



1200 HP MTU 8 cylinder



# Holding the course



# Interesting places

Savannah 3/17/2016



NYC August 2017

# Celestial Navigation



Apparent noon with Sextant





# Reveille



The racks



2 workouts per day

## Swim call in the Gulf Stream





# Dignitary Receptions





Thanks for sailing along



[www.infovivawebs.com/Eagle2016](http://www.infovivawebs.com/Eagle2016)