

DOING GOOD IN THE WORLD WITH THE ROTARY FOUNDATION



Annual Fund of the Rotary Foundation

Your gift to the Annual Fund helps Rotary and Rotaract clubs take action today to create positive change in communities close to home and around the world. Your contributions help us strengthen peace efforts, fight disease, provide clean water and sanitation, save mothers and children, support education, grow local economies, and protect the environment. Donations to the Annual Fund are invested for three years with the interest earned helping to pay for Rotary Foundation administrative expenses.

The Rotary Foundation's Annual Fund includes SHARE, the World Fund, and our areas of focus funds; however, District Designated Funds (DDF) are accumulated exclusively from Annual Fund donations designated for SHARE. The [Every Rotarian, Every Year](#) initiative asks all members to donate to the Annual Fund each year and take part in at least one Foundation project or program each year.

Annual Fund SHARE

Through the SHARE system, contributions to The Rotary Foundation are transformed into grants that fund local and international humanitarian projects, scholarships, vocational training teams, and more. At the end of every Rotary year, contributions directed to the Annual Fund-SHARE from all the clubs in the district are divided between the World Fund and the District Designated Fund, after 5% is deducted for operating expenses.

At the end of three years, our district can use the DDF to pay for Foundation, club, and district projects that your club and others in the district choose. Districts may use up to half of their DDF to fund [district grants](#). The remaining DDF may be used for [global grants](#) or donated to PolioPlus, the Rotary Peace Centers, or another district.



Donation to Annual Fund **SHARE**

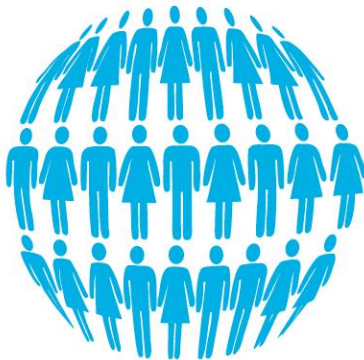
Donation is invested for 3 years; growth supports Foundation operations.



SPENDING DECISIONS SHARED

World Fund

(Trustee discretion)



GLOBAL
GRANTS AND
PROGRAMS*

District Designated Funds (DDF)

(District discretion)



DISTRICT
GRANTS GLOBAL
GRANTS

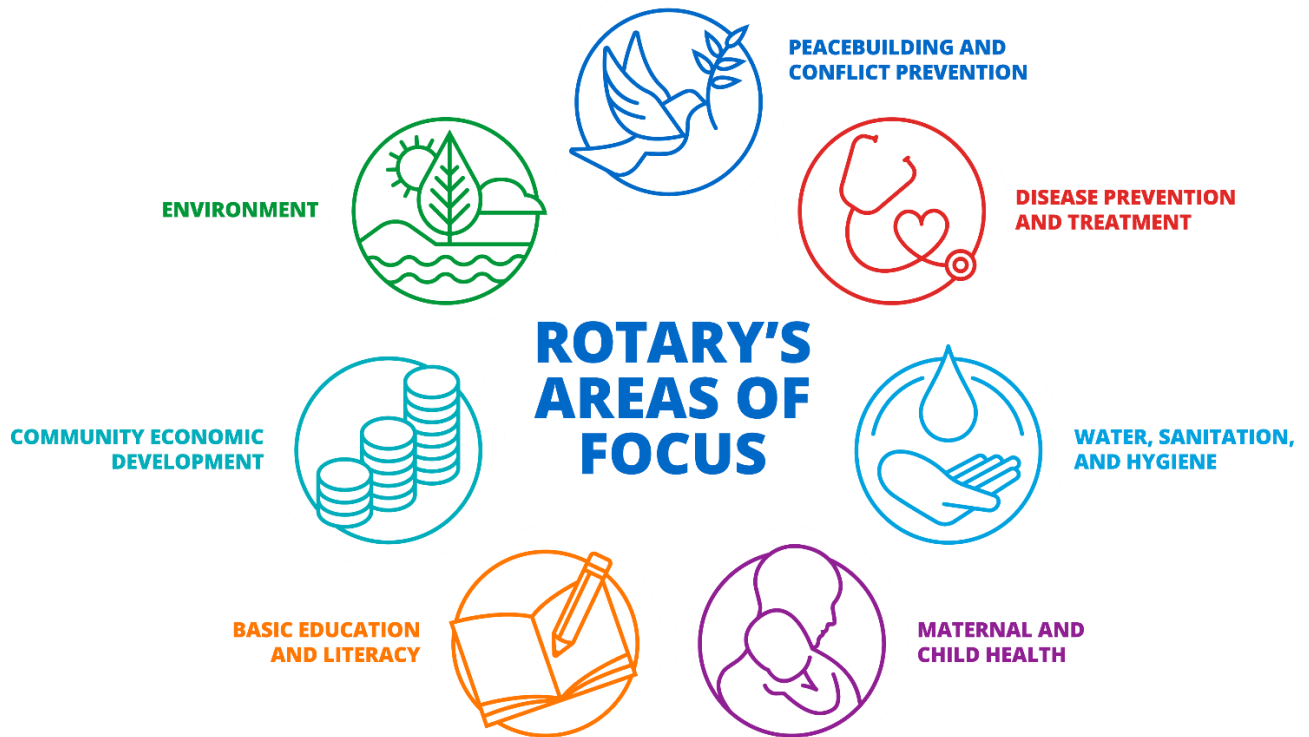
*Includes PolioPlus, Rotary Peace Centers, other districts, and the Endowment Fund (areas of focus)

Annual Fund World Fund

The World Fund provides the necessary funding for our highest-priority activities around the globe. Although 47.5% of the donations directed to Annual Fund SHARE are applied to the World Fund automatically, you can also choose to direct your entire gift to the fund. The Foundation uses the money to pay for grant and program opportunities available to all Rotary districts.

Annual Fund Areas of Focus

Annual Fund contributions that are directed to the Foundation's areas of focus count toward a club's annual giving goal and per capita giving calculations. They are not included in a district's SHARE calculation and do not increase its DDF.



Ways to support our Annual Fund

Give your annual gift

You can direct your Annual Fund contributions to SHARE, the World Fund, or one of Rotary's areas of focus. All of these contributions will be spent on sustainable, life-changing Rotary projects.

Recurring giving through Rotary Direct

Support the Annual Fund year-round by making a recurring gift. You choose how often and how much you want to give. It's a simple and secure way to make a big impact.

A monthly, quarterly, or annual gift option is available for all [online contributions](#). You can enroll at the [Rotary Direct page](#), return a completed [Rotary Direct enrollment form](#), or enroll by phone at +1-866-976-8279.

To update your recurring donations, sign in to My Rotary and, under your name, choose My Donations. Or write to rotarydirect@rotary.org or call +1-866-976-8279. For security reasons, please make any changes to your credit card information online or by phone. Do not send credit card information by mail or email.

Annual Fund donor recognition

All Annual Fund contributions count toward the following [recognition opportunities](#):

- Every Rotarian, Every Year
 - Contribute at least \$25 USD
- Rotary Foundation Sustaining Member
 - Contribute at least \$100 USD
- Paul Harris Fellow*
 - Contribute at least \$1,000 USD or receive Foundation Recognition Points or any combination of either to reach \$1,000 in donor recognition
- [Paul Harris Society](#)*
 - Contribute at least \$1,000 USD annually and notify the Rotary Foundation of your intention to join the Paul Harris Society and contribute at this level annually
- Major Donor*
 - Contribute at least \$10,000 USD
- Arch Klumph Society*
 - Contribute at least \$250,000 USD

*Recognition-eligible gifts also can be made to the Polio Plus Fund or to an approved Global Grant.

Foundation giving club recognition

- 100 percent Foundation Giving Club
- Every Rotarian, Every Year Club
- 100 percent Paul Harris Club
- 100 percent Paul Harris Society Club
- 100 percent Rotary's Promise Club
- Rotary Giving Certificate
- The 100% Foundation Giving Club banner recognizes clubs whose members give an average of \$100 to any Foundation fund, with every member contributing at least \$25.
- The Every Rotarian, Every Year Club banner recognizes clubs whose members give an average of \$100 to the Annual Fund, with every member contributing at least \$25.
- The 100% Paul Harris Society Club banner recognizes clubs whose members each contribute at least \$1,000 to the Annual Fund, PolioPlus Fund, or an approved global grant during a given Rotary year.
- The 100% Paul Harris Fellow Club banner recognizes clubs whose active members are all Paul Harris Fellows at the time when the district governor requests the banner. This banner can be earned only once.
- The 100% Rotary's Promise Club banner is given to clubs in which every dues-paying member supports the Endowment. The support may be a commitment of a future gift in an estate plan or an outright gift of \$1,000 or more to the Endowment.
- Rotaract clubs can earn a digital Rotaract Giving Certificate if at least five of their members give to the Foundation and the total is at least \$50.





For the 14th consecutive year, The Rotary Foundation has received the highest rating — four stars — from [Charity Navigator](#), an independent evaluator of charities in the U.S.

The Foundation earned the recognition for adhering to sector best practices and executing its mission in a financially efficient way, demonstrating both strong financial health and commitment to accountability and transparency. Only one percent of the organizations Charity Navigator evaluates have received 14 consecutive 4-star evaluations.

The rating reflects Charity Navigator's assessment of how the Foundation uses donations, sustains its programs and services, and practices good governance and openness.

Ways to give

- Automate your giving through Rotary Direct
- Donate online at rotary.org/donate
- Give a check/cheque to your club's Rotary Foundation chair
- Mail your gift directly to the Rotary Foundation:
- Use a gift to honour or remember someone
- Increase your impact with corporate matching
- Start a fundraiser on Raise for Rotary

The
Rotary
Foundation

