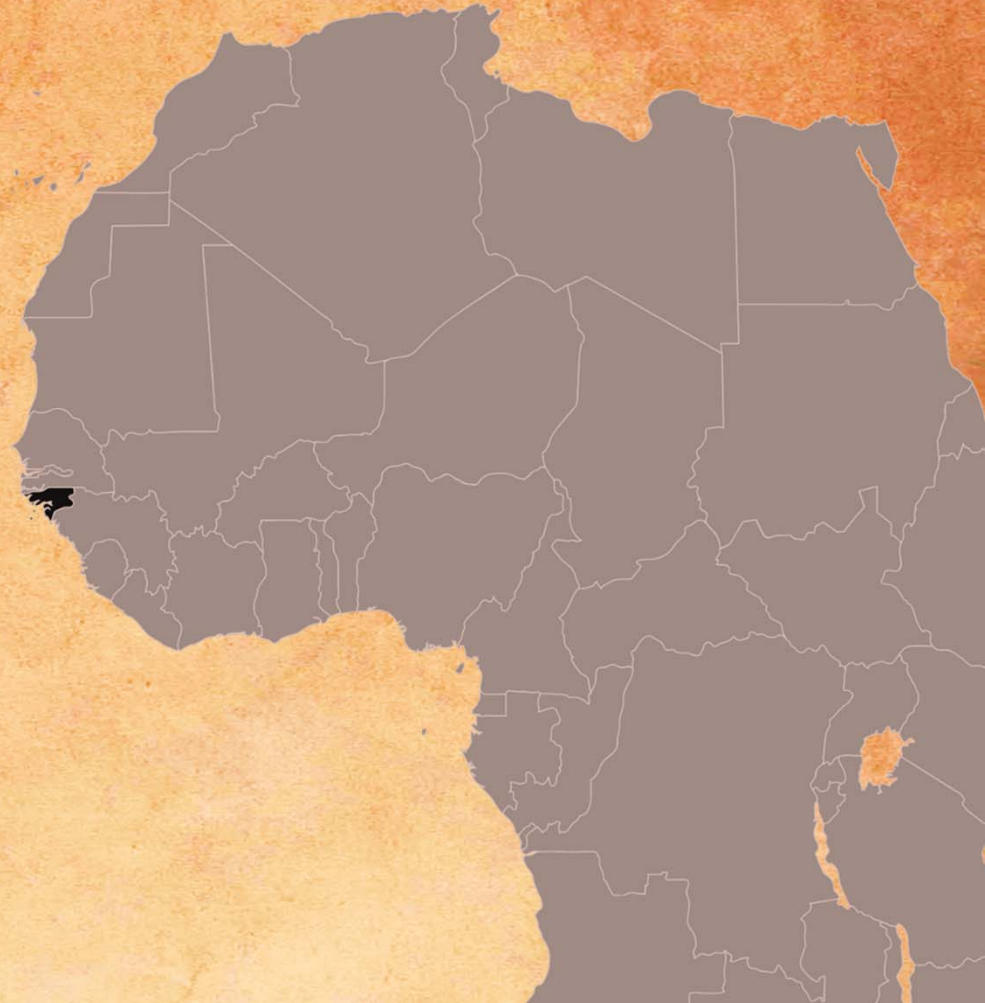


**They are ready.
Give them the opportunity.**

Guinea-Bissau



Guinea-Bissau by the Numbers

1.7Million	Guinea-Bissau's current population
\$672	Per Capita GDP (US's is \$54,306)
>65%	Percentage of the population under 25
53.5%	Primary School Enrolment Rate
5	The number of Doctors per 100,000 population
49	Average Life Expectancy in Years





Subsistence Fishing



WAVS WORK IN GUINEA-BISSAU

- THE JESUS INDUSTRIAL SCHOOL, CANCHUNGO
 - 10 YEARS OF OPERATION
 - OVER 700 GRADUATES IN INFORMATION TECHNOLOGY, ENGLISH, FRENCH, WELDING, AUTO MECHANICS, CULINARY ARTS, SEWING
 - DEDICATED TO CONTINUOUS IMPROVEMENT

JIS Faculty





BACK AROUND 2004, MARTHA REYNOLDS ACTED ON HER VISION FOR A VOCATIONAL SCHOOL IN THE COUNTRY OF GUINEA-BISSAU



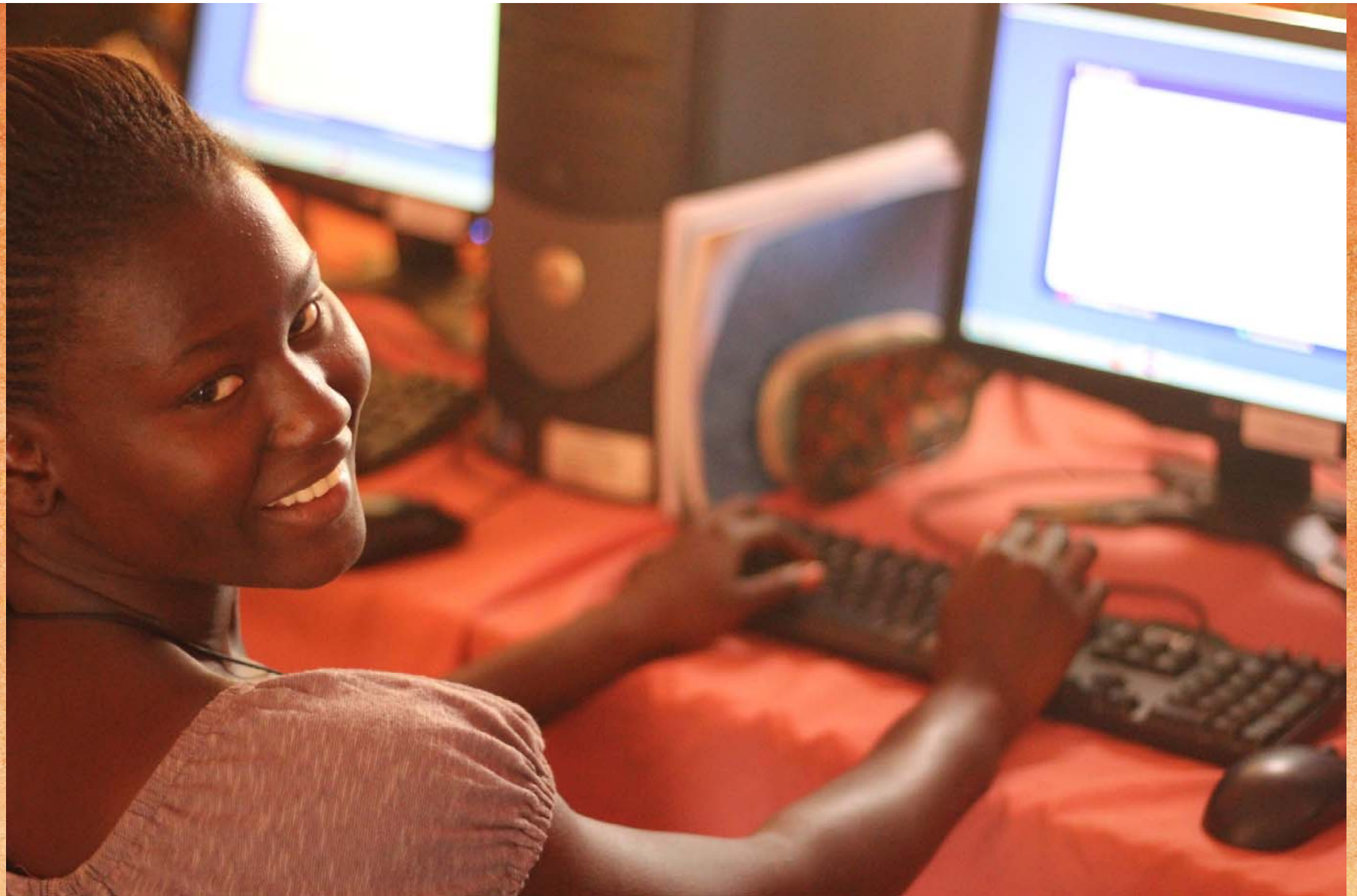
THE SCHOOL IN CANCHUNGO OPENED IN 2006.

THE FIRST GRADUATING CLASS CONSISTED OF 11 AUTO MECHANICS



ENGLISH
INFORMATION TECHNOLOGY
FRENCH
WELDING
AUTO MECHANICS

Courses taught today.





Auto Mechanics Class



Welding Shop



Security Gates by JIS



Grills waiting to be installed



School Desks by Welding Students



GRADUATION DAY



**NEW
ENTREPRENEURS
PROGRAM**



We help get loans to buy equipment to start a business.



Our graduate set up a welding shop on a bit of land.

Piaget University – WAVS' Partners in Antula



DR. BALDE, PIAGET UNIVERSITY



We work with nearby universities.

Lab at Piaget University

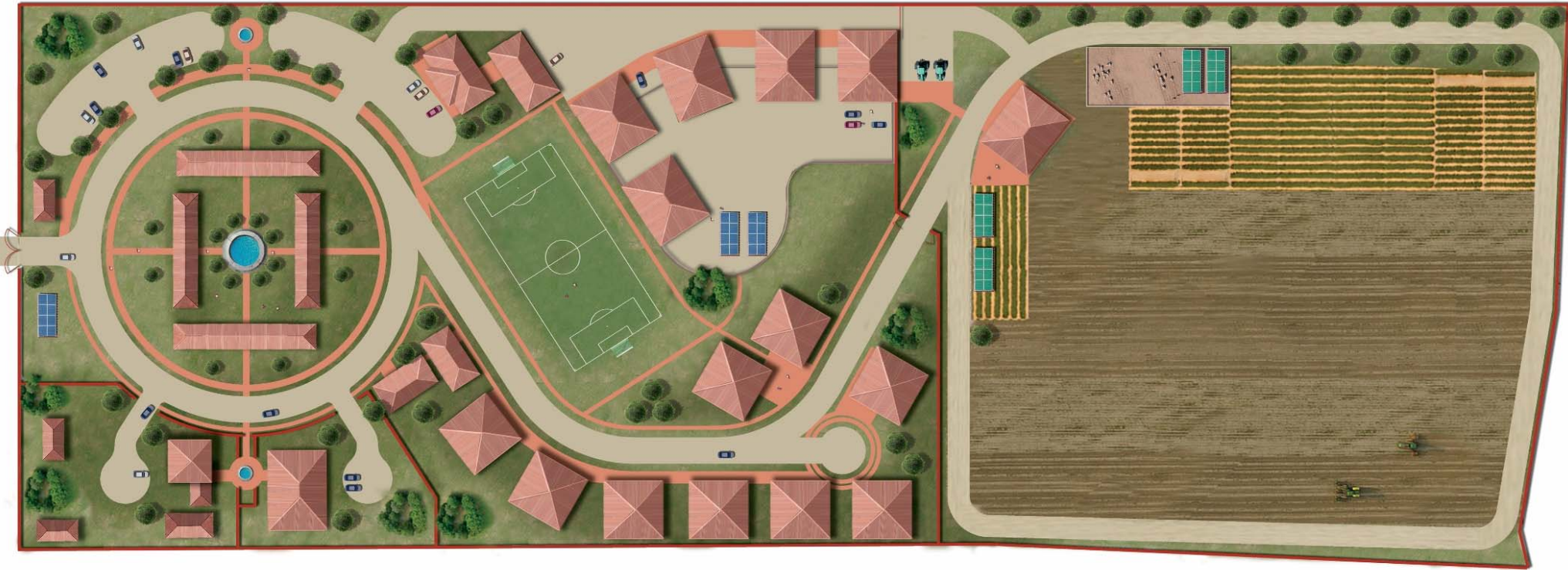


We were offered land in Antula to expand our facility



Land for New Campus

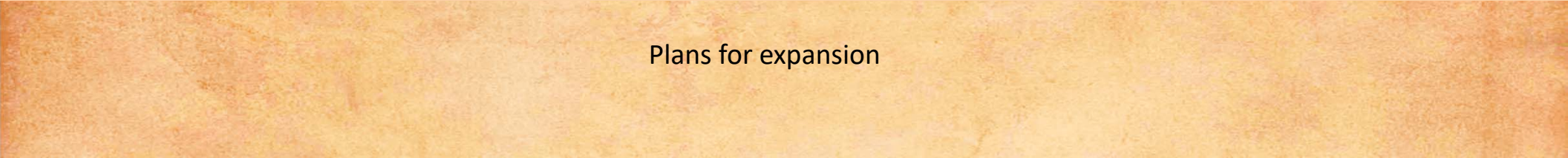




Plans for expansion.



Plans for expansion



THE FUTURE

- 1,000 STUDENTS IN ANTULA
- A TRAINING PROGRAM FOR MINERALS GUINEA-BISSAU
- CONSTRUCTION TECHNOLOGY
- AGRICULTURE
- HOTEL/MOTEL MANAGEMENT, HOSPITALITY SERVICES

Thank You LFP Rotary for helping us buy this needed
Toyota Land Cruiser!

