



**Our Rotary  
Foundation**



## **Group Study Exchange**

**2014-2015 Exchange**

**District 6060 - Missouri with  
District 9920 - New Zealand**



Rotary District 6060's Group Study Exchange with New Zealand's Rotary District 9920 is being planned for April 10 – May 6, 2015. District 6060 is currently accepting applications from potential Rotarian team leaders and potential team members (non-Rotarians). The 6060 GSE team will visit New Zealand's North Island where the cosmopolitan cities of Auckland and Wellington are complemented by sandy beaches, rugged coastlines, volcanoes, and thermal springs.

**Vocational Area of Focus:** All team members will have a vocational focus and professional experience related to providing services for refugees and immigrants in Missouri. GSE is a four-week, all-expense-paid, personal and professional development opportunity to learn how your profession related to serving refugees and immigrants is conducted in New Zealand. Team members must be age 25-40, residents of District 6060, employed in their field for at least 2 years, and demonstrate exemplary professional conduct.

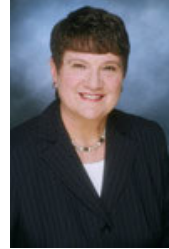
Applications are currently being accepted from possible Rotarian Team Leaders and from potential Team Members. Applications and more information about GSE can be found on the District website at [www.rotary6060.org/view/37](http://www.rotary6060.org/view/37).

Team leader applications are due by September 30; team member applications are due by October 15. Contact Dr. Sue Cobb, GSE Chair, at [scobb@mail.win.org](mailto:scobb@mail.win.org), 636-284-4686 (c), or 636-447-8446 (h).

## District 6060 Team

**Team Leader:**

**Marcia Barber**  
RC of St. Louis

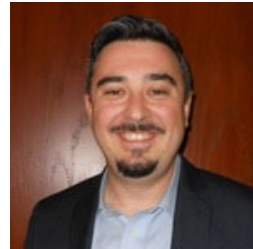


**Team Members:**

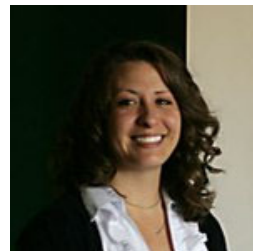
**Kate Howell**  
VP Development & Communications  
International Institute of St. Louis



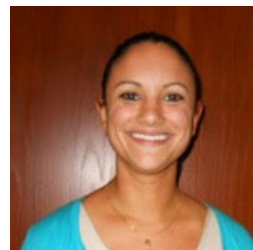
**Blake Hamilton**  
Workforce Solutions Program Mgr.  
International Institute of St. Louis



**Jeannine Cinco**  
Employment Specialist  
Places for People



**Erica Munoz-Fitch**  
Services Coordinator  
Casa de Salud



## District 9920 Team

**Team Leader:**

**Carmel Stewart**



**Team Members:**

**Austin Kim**



**Chandra Yogeswaren**



**Preeti Walia**



**Inbound Itinerary and Area Coordinators  
April - May , 2015**

**Dr. Susan Cobb, GSE Chairman**  
[scobb@mail.win.org](mailto:scobb@mail.win.org)

**Location**

**Coordinators**

**North Area  
April 23-26**

**Rennie Davis,  
Vandalia Rotary Club**

**St. Charles County  
April 26-30**

**Donna Marie Pierre,  
Wentzville Rotary Club**

**South Area  
May 3-9**

**Wayne Cook,  
Piedmont Rotary Club**

**West Area  
May 9-12**

**Greater St. Louis Area  
May 12-20**

**Linda Puchbauer,  
Cape Girardeau West Rotary Club  
Debbie Door,  
Washington Rotary Club  
Jean Magre  
Lustilien Landry  
Webster Groves Rotary Club  
Vic Difate,  
St. Louis Rotary Club**