

### OFFICERS

Victor Caceres -  
*President*

Hue Banh -  
*Secretary*

Bernard A. Bernstein -  
*Treasurer*

Beth Brooks -  
*Past President*

Jeff Keating -  
*President Elect*

### DIRECTORS

Markus Ansmann

Daryl Beans

Tami Farley

Gary George

Clive Houston-Brown

Thomas Hsieh

Darren Krohn

Ron Vander Molen

Carol Wilt

### PHOTOGRAPHER

James T. Morgan

### EDITOR

Markus Ansmann

### POMONA ROTARY

740 N. Garey Ave.

Pomona, CA

91767-4614



"Service Above Self"

### MAKE-UP LOCATIONS

#### TUESDAY:

COVINA - Sunrise 7:15 am  
South Hills Country Club  
2655 N. Citrus Ave., West Covina

RANCHO DEL CHINO - 7:15 am  
Papachinos Grill & Greens  
14501 Ramona Ave., Chino

WALNUT VALLEY - 7:15 am  
The Diamond Bar Golf Club  
22751 Golden Springs Dr., Diamond Bar

#### WEDNESDAY:

CHINO - 12:00 pm  
Chino Community Building  
5443 B. St., Chino

CLAREMONT - Sunrise 7:15 am  
St. Ambrose Episcopal Church  
830 W. Bonita Ave., Claremont

SAN DIMAS - 12:00 pm  
Via Verde Country Club  
1400 Avenida Entrada, San Dimas

UPLAND - 12:00 pm  
Landecena Community Center  
1325 E. San Bernardino Rd., Upland

WEST COVINA - 12:15 pm  
South Hills Country Club  
2655 S. Citrus Ave., West Covina

#### THURSDAY:

COVINA - 12:10 pm  
South Hills Country Club  
2655 S. Citrus St., West Covina

LA VERNE - 7:30 am  
Univ. of La Verne President's Dining Room  
1950 3rd St., La Verne

ONTARIO - 12:00 pm  
DoubleTree Hotel  
222 N. Vineyard Ave., Ontario

#### FRIDAY:

ARCADIA - 12:00 pm  
Embassy Suites  
211 E. Huntington Dr., Arcadia

CLAREMONT - 12:00 pm  
DoubleTree Hotel  
555 W. Foothill Blvd., Claremont

or go to:  
[www.rotary.org](http://www.rotary.org)



## Forest Lawn®

MEMORIAL-PARKS & MORTUARIES

Daniel Thomas  
Advance Planning Manager

21300 Via Verde Drive, Covina, California 91724  
Cell: 626-975-4132 • Email: [dthomas@forestlawn.com](mailto:dthomas@forestlawn.com)  
FD 1150 • CA Lic. OF03703 • CA Insurance 0D08477

1-800-204-3131 • Direct: 626-732-2400



Printed on Recycled Paper ♻️

**Valley Vista Services**  
*Recovering the Earth's Resources  
Waste Disposal and Recycling Division*

Jillian Reiff  
Community Relations Manager

17445 East Railroad Street  
City of Industry, California 91748

(626) 855-5513  
Cell (626) 625-0004  
Fax (626) 961-1105

## Bernstein & Rathman, Inc.

Certified Public Accountants

740 North Garey Avenue  
Pomona, California 91767-4614

Bernard A. Bernstein, CPA (909) 620-8388  
Fax (909) 469-5872



**DR. JEFFERY D. VANIMAN**  
Chiropractor

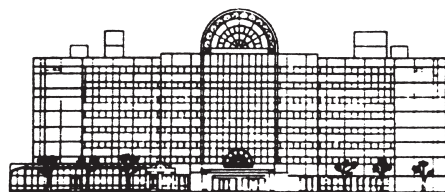
253 W. Orange Grove Avenue  
Pomona, California 91768  
909 / 629-5001

VANDENMARS - Original Games.



**ColorTrek™**  
The most colorful brain training ever!

Play now for free!  
[colortrek.vandenmars.com](http://colortrek.vandenmars.com)



Sheraton Suites Fairplex (800) 722-4055  
601 W. McKinley Avenue, Pomona, CA 91768



**ROTARY:  
MAKING A  
DIFFERENCE**

Official Bulletin  
**Pomona Rotary Club**

President's Theme:  
***"Be Inspired By Our Service"***  
Victor Caceres, President

Rotary International President:  
Ian H.S. Riseley  
Sandringham, VIC, Australia

District Governor:  
Raghada Khoury  
Apple Valley Club, CA

Founded 1921  
Club #797

[www.pomonarotary.org](http://www.pomonarotary.org)

## The Four-Way Test

*of the things we think, say or do.*

*First* - Is it the TRUTH?

*Second* - Is it FAIR to all concerned?

*Third* - Will it build GOOD WILL  
and BETTER FRIENDSHIPS?

*Fourth* - Will it be BENEFICIAL to all concerned?



What do we do? Improve people's lives! Where do we do it? Locally and globally! How do we do it? Through service!





Rotary is a dynamic community service organization which supports charitable causes locally and world-wide.  
Rotary International has over 1.2 million members in over 100 countries.

Care to see all photos from last week?  
They can be viewed and downloaded from here:  
<http://bit.ly/PRotary121917>  
or scan QR Code



Jan 9th, 2018

### THIS WEEK'S PROGRAM

Jan 9 - Students

### FUTURE PROGRAMS AND EVENTS

Jan 16 - Van Muse - Pathways College

Jan 23 - Marilyn Hokanson - Early Learning Literacy

Jan 30 - Matt Gilson - PGA Foundation

Feb 6 - Tom Hsieh - Starfish

### WEEK (Dec 19<sup>th</sup>, 2017)

### GUESTS AND VISITING ROTARIANS

No guests or visitors this week.

### AROUND THE CLUB

Our Rotary Christmas Party this year on Tuesday, December 19<sup>th</sup> at Curt Annett's house was a great way to kick off the holiday season! Thank you to everyone who attended, contributed appetizers and desserts, or participated in the White Elephant gift exchange. It was a lot of fun! Photos can be viewed and uploaded at <http://bit.ly/PREvent121217> or by scanning the QR code on the left.



### PRESIDENT'S MOMENT

Fellowship is a cornerstone of our Pomona Rotary Club.

### ANNOUNCEMENTS

- We will be voting for new board members during our meeting on January 9<sup>th</sup>. Please hand your ballot to Hue by the end of the meeting.

### MEMBER RECOGNITION - Gary George

- A big, big thank you to **Curt Annett** for hosting our amazing Christmas party at his house.
- Thanks also to **Darren Krohn** for adding some extra fun and adrenaline to the Pomona Express Christmas Parade with the train horn in his truck.

### PROGRAM - Yesenia Arias - Foothill Gold Line

The population of Los Angeles County is projected to grow by 5.9% to 10.7 million by 2024. 18% of this growth is expected to be taken on by the San Gabriel Valley. Having to accommodate the associated growth in commuter traffic will place a huge burden on all existing means of transportation, especially freeways. The Metro Gold Line Foothill Extension will be able to help service this traffic by providing an alternative mode of transportation that, unlike buses, will not be affected by increased freeway congestion. The Gold Line is a light rail system, which operates fully electrically with trains running every 15 minutes, servicing stations that are usually about 1-2 miles apart. This makes it quite different from the commuter-targeted Metrolink, which is diesel powered

and runs much fewer trains, primarily during peak hours with stations spaced about 2-5 miles apart. The value of the Metro Gold Line is apparent from its ridership on the already existing section, which is at an all-time high with around 54 thousand boardings every weekday and around 58 thousand boardings every weekend, leading to a total of around 1.4 million boardings and 8.5 million miles travelled every month. In 1998, the Foothill Gold Line Construction Authority (FGL) was created to plan, design, and build the Gold Line from LA Union Station to Montclair. After construction is completed, the FGL will be closed and the line will be handed over to Metro for operation. The first two of the three construction phases (Union Station to Pasadena and Pasadena to Asuza) have already been completed, both on time and under budget. The third phase (from Asuza to Montclair) just celebrated its ground breaking ceremony on December 2<sup>nd</sup> to begin utility relocation as the first Measure M funded project. As per the current time plan, construction should be completed and operation will start by 2026. The third phase will extend the Gold Line by another 12.5 miles to 6 new stations in 6 cities. It will include building 26 at-grade street crossings, 25 bridges, 11 power supply stations and several pedestrian crossings. Since it shares part of its the corridor with the BNSF freight line and with Metrolink, the project also needs to include relocation of existing tracks and the

relocation of the Claremont Metrolink station, both without interruption of either service. To achieve all this, the project needs to coordinate with two counties and many other 3<sup>rd</sup> parties, like local governments, agencies, utility companies, or interest groups, and, of course, all construction providers. The project's costs are estimated to sum to \$1.5 billion, most of which (over \$1.1 billion) will be provided by Measure M and left-over funds from Measure R. When the main part of the work begins in 2020, some streets will need to be closed for the construction of crossing. Closure notifications will be posted and mailed to local residents. While large construction equipment will have to be used, no major pile driving is expected, which should help to limit noise. Pomona's Gold Line Station will be located right next to Metrolink's Pomona (North) station for convenient transfers. It will include a new 980-space parking garage shared with Metrolink with charging spaces for EV vehicles, bicycle parking, and a bus drop-off location. The station will feature a commemorative walkway on the overpass staircase designed by artist Stephen Farley.



**O' DONOVAN'S**  
GOOD FOOD  
+ GOOD DRINKS  
= GOOD FUN  
101 E. 3RD STREET - POMONA - (909) 397-4384

**John Forbing**  
Agent  
License # 0502558  
**State Farm**  
STATE FARM® INSURANCE AGENT  
POMONA, CA  
909-623-8571  
johnforbing.com

Distinguished Member of Signature Travel Network  
Apple Vacations Platinum Agency  
CST #2058219-40  
**POMONA TRAVEL AGENCY**  
TRAVEL SPECIALIST - FOREIGN and DOMESTIC  
ALL MAJOR AIR and CRUISE SHIP LINES  
TAMI FARLEY  
Travel Consultant  
pomonatrazel@aol.com  
www.pomonatravel.com  
(909) 623-6475  
CELL (909) 240-0386  
FAX (909) 865-8482

**WMR**  
PROPERTY MANAGEMENT  
COMMUNICATION IS THE KEY  
**Daryl Beans**  
909-236-5401

**Carol Wilt**  
Broker Associate/Realtor®  
(909) 573-4634 cell  
(909) 861-0586 fax  
Lic. #01153123  
carol.wilt@yahoo.com  
www.carolwilt.com  
**COLDWELL BANKER**  
TRI-COUNTIES REALTY  
Coldwell Banker Tri-Counties  
1241 Grand Ave., #8, Diamond Bar, Ca. 91765  
TAMM FOR TAMP  
REPRESENTATIVE